

FIGURE A.11.8.3(c) A Smoke Detector Should be Located on each Story.

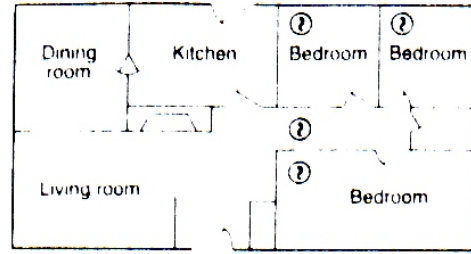


FIGURE A.11.8.3(a) A Smoke Detector Should be Located between the Sleeping Area and the Rest of the Dwelling Unit as Well as in each Bedroom.

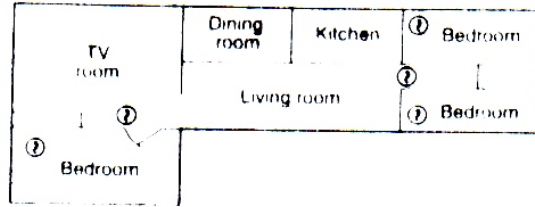
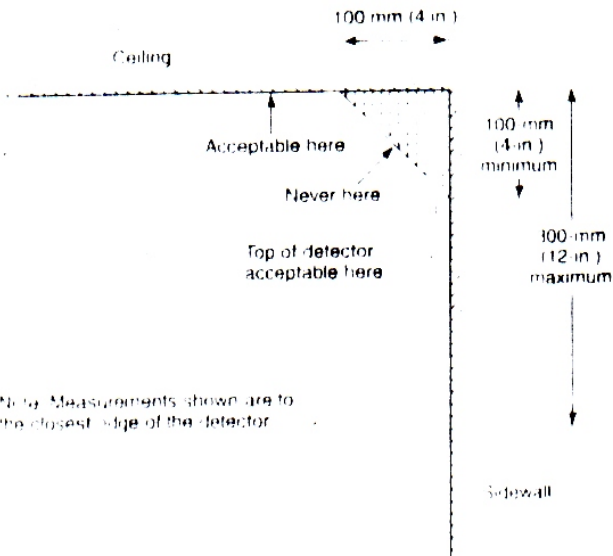


FIGURE A.11.8.3(b) In Dwelling Units with More than One Sleeping Area, a Smoke Detector Should be Provided to Protect each Sleeping Area in Addition to Detectors Required in Bedrooms.



Note: Measurements shown are to the closest edge of the detector.

FIGURE A.11.8.3(d) Example of Proper Mounting for Detectors.

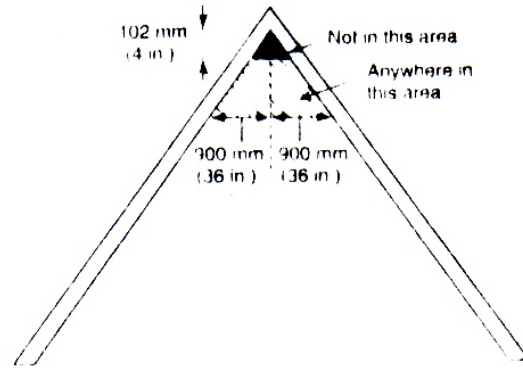


FIGURE A.11.8.3.2 Example of Proper Mounting for Alarms and Detectors with Peaked Ceilings.

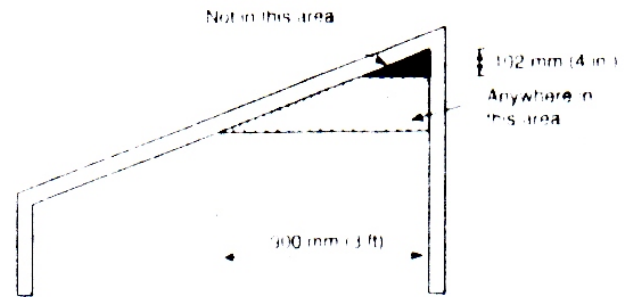


FIGURE A.11.8.3.3 Example of Proper Mounting for Alarms and Detectors with Sloped Ceilings.