



New Milford 2020 POCD Update

Beginning the Planning Process

October 25, 2018

POCD Update Committee Meeting



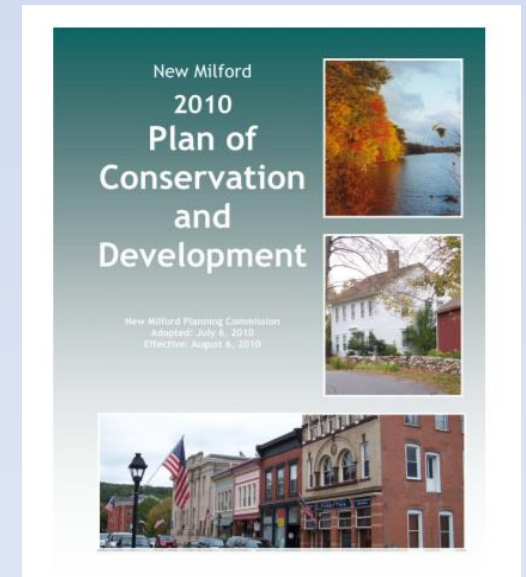


Agenda

- Plan of Conservation and Development “POCD”
Legislative Background
 - Why do we need a POCD?
 - How will the 2020 POCD be used?
 - What needs to be in a POCD?
- The Process of Preparing a POCD Update
- Discussion with 2020 POCD Special Committee:
Issues and Priorities to be addressed in 2020 POCD

Why do we need a POCD?

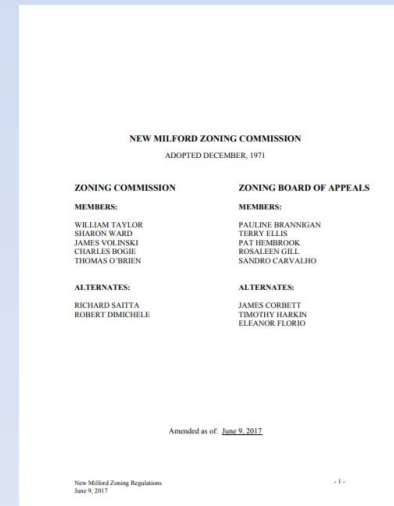
- Having a Plan (POCD) allows us to make informed decisions about New Milford's future
- Connecticut General Statutes Section 8-23 requires Towns to have a POCD adopted or updated at least every 10 years



How will the 2020 POCD be used?

As a Guide to...

- Coordinate Community Activities
- Guide Land Use Decisions and Regulations
- Plan and Guide Public Projects



POCD Update Legislative Background

- CGS 8-23 requires that at least every 10 years the Planning Commission prepares or amends and adopts a POCD
- 2010 POCD was adopted July 6, 2010
- Goal is to have a draft 2020 POCD completed by the POCD Update Committee by Fall 2019 to allow the Planning Commission adequate time to review and adopt
- If the new POCD is not adopted before the 2010 POCD expires the Town will be ineligible for many state grants



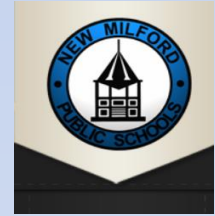
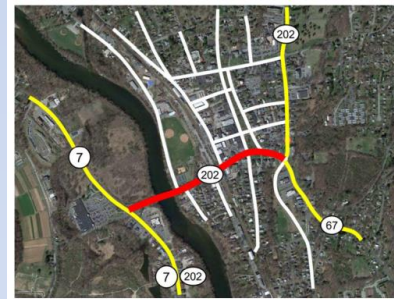
What needs to be in a POCD?

- The Plan *SHALL consider*:
 - Affordable Housing
 - Protection of water resources
 - Use of cluster development
 - The State and Regional POCDs
 - Physical, Social, Economic and Governmental Conditions & Trends

The Plan *SHALL consider* (continued)

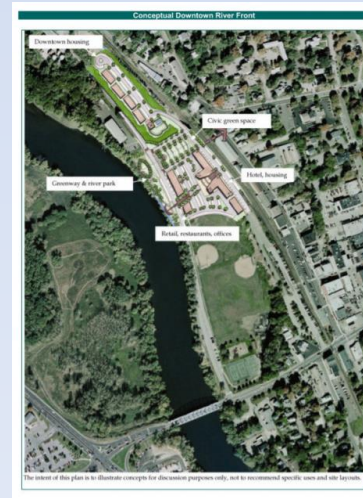
Needs of the municipality including

- Human Resources
- Education
- Health
- Housing
- Recreation
- Social Services
- Public Utilities
- Public Protection
- Transportation and Circulation
- Cultural and Interpersonal Communications
- Energy Efficient patterns of development/renewable energy
- Protection and Preservation of Agriculture



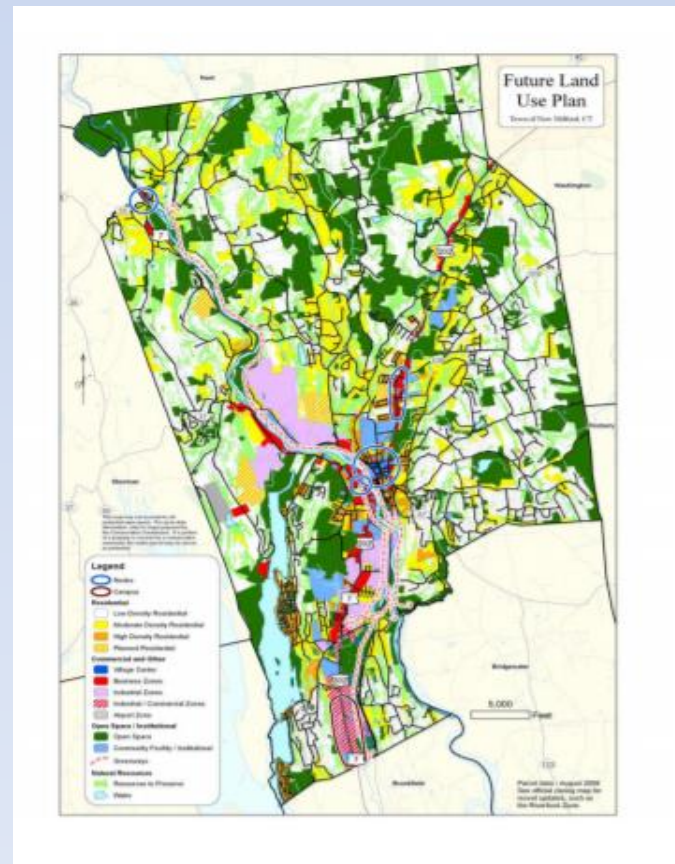
The Plan SHALL

- Provide a statement of policies, goals, and standards regarding the Physical and Economic Development of the Town
- Provide for a system of thoroughfares including Roads, Sidewalks, Multipurpose Trails, etc.
- Consider focusing development and revitalization in areas with existing or planned physical infrastructure
- Be designed to promote the following development patterns:
 - Transit Accessible
 - Pedestrian-oriented
 - Mixed Use
 - Land Reuse



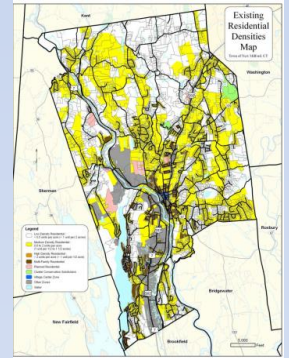
The Plan SHALL (continued)

- Include a recommended Land Use Map for...
 - Residential uses
 - Recreational uses
 - Commercial uses
 - Industrial uses
 - Conservation
 - Agricultural uses



The Plan SHALL (continued)

- Recommend Desirable Population Densities
- Note Inconsistencies with the following Growth Management Principles...
 - Redevelopment and Revitalization of Commercial Center with Existing or Planned Infrastructure
 - Expansion of Housing Opportunities
 - Concentration of development around transportation nodes and transportation corridors
 - Protection of Environmental Assets critical to Public Health and Safety
 - Integration of Planning across all levels of government
 - Conservation and restoration of....
 - Natural Environment, Cultural/Historic Resources, Farmland



The Plan SHALL (Continued)

- Make provisions for development of housing opportunities for all residents
- Promote housing choice and economic diversity in housing for both low and moderate income households
- Consider allowing older adults and persons with a disability the ability to live in their homes and communities whenever possible



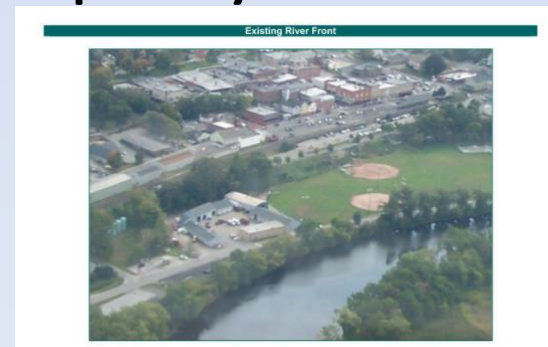
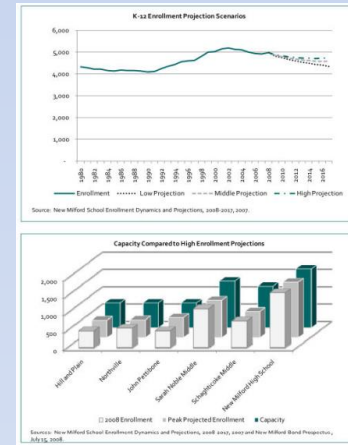
The Plan *MAY* include Recommendations for

- Conservation and Preservation of Ridgelines
- Parks and other Public Grounds
- The general location and improvement of Schools and other Public Buildings
- The general location and extension of public utilities
- Public Housing projects
- Programs for Plan Implementation
- Proposed Priority Funding Areas
- Other beneficial recommendations



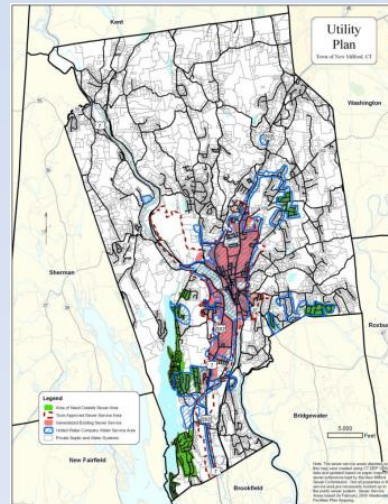
The Plan MAY Include Necessary..

- Maps
- Explanatory Material
- Photographs
- Charts or Pertinent Data
- Information relative to the Past, Present or Future needs of the Municipality



The Plan SHALL Identify...

- The General Location and Extent of any..
 - Areas served by Existing Sewers
 - Areas where Sewers are Planned
 - Areas where Sewers are to be Avoided



Overall Process for Creating a 2020 POCD

How will the Plan be Formulated?

- Over the next 12 months the POCD Update Committee will meet regularly with staff, officials, interested citizens and other stakeholders to review, discuss and refine the data and recommendations that will comprise the Plan
- Emphasis will be placed on local input and involvement
- Information gathered during the process will be reviewed and included in the Plan where appropriate
- Efforts will be made to encourage and consider input through...
 - Public Meetings
 - Interviews with Town Agencies
 - Interviews with Dept Heads, etc
 - Workshops
 - Outreach to Stakeholders



Overall Planning Process Steps

- Receive Community Input
- Perform Inventory/Research
- Assessment of Information Gathered (Vision, Goals, Alternatives)
- Strategy Development
- Receive Community Feedback
- Plan Adoption
- Plan Implementation



Input from the 2020 POCD Committee: Issues and Priorities to be addressed in 2020 POCD

What are you Proud of?

- What Contributes to Character New Milford?
- What Enhances our Quality of Life?
- What Supports Traditions?



Input from the 2020 POCD Committee: Issues and Priorities to be addressed in 2020 POCD

What are you Sorry about?

- Blemishes?
- Irritants?
- Deficiencies?

Input from 2020 POCD Committee: Issues and Priorities to be addressed in 2020 POCD

- ❖ What do you think needs to be addressed in the 2020 POCD?
 - ❖ What are the ISSUES facing New Milford?
 - ❖ What are New Milford's PRIORITIES?
 - ❖ Overall comments about the 2010 POCD...
 - ❖ Suggestions for modifications to format
 - ❖ Suggestions for modifications to content

Next Steps (finished!)

- Establish a POCD Update Committee to be appointed by the Planning Commission
 - How many members?
 - Representation?
 - Zoning, Planning, Conservation, EDC, Inland Wetlands, Town Council, Board of Finance, etc.
 - CGS 8-23 is very flexible about POCD Update Committee membership

Next Steps (Continued)

- POCD Update Committee meets and begins the process...
 - Prepares and performs a survey to receive input from residents....
 - Telephone survey (costly)
 - Survey Monkey
 - Other survey method
 - Committee Holds Workshops for feedback on issues and priorities
 - Committee meets with Boards, Agencies, Commissions, Committees, Departments and other Stakeholders for feedback on issues

Next Steps (Continued)

- Staff updates data
- Staff coordinates update of mapping
- Committee prepares draft 2020 POCD and submits to the Planning Commission by Fall 2019

Resources

The following plans, studies and reports can be found on the Town's webpage, www.newmilford.org on the Planning Department Page:

- Western CT Economic Development Plan 2017
- New Milford Transportation Management Plan 2013
- Action Plan for Preserving Candlewood Lake 2002
- New Milford River Trail Alignment Study 2018
- Sullivan Farm Plan 2018
- Housing Workshop Report 2018
- Map of Farms and Farmland Soils 2018
- Map of Protected Lands 2018
- New Milford MS4 Stormwater Management Plan 2017