



LIMITED INSPECTION FOR ASBESTOS CONTAINING MATERIALS AND LEAD IN PAINT

***JOHN PETTIBONE ELEMENTARY SCHOOL
NEW MILFORD, CONNECTICUT***

Presented to:



The Town of
New Milford, Connecticut

Prepared by:

TRC Environmental Corporation (TRC)
21 Griffin Road North
Windsor, Connecticut

A handwritten signature in black ink, appearing to read "Anthony Minalga".

Anthony Minalga, HHS
Project Manager

Reviewed By:

Edward Doubleday, TRC

***TRC Project Number:
270902.0001***

Issued- February 10, 2017

TABLE OF CONTENTS

EXECUTIVE SUMMARY

TABLES

- 1 BULK SAMPLE SUMMARY OF SUSPECT ACM
- 2 IDENTIFIED/PRESUMED ASBESTOS CONTAINING MATERIALS
- 3 CONFIRMED NON-ASBESTOS CONTAINING MATERIALS

LEAD IN PAINT XRF FIELD DATA MEASUREMENT TABLE

ATTACHMENTS

BUILDING SKETCHES/DRAWINGS (Field notes, material locations)
ASBESTOS LABORATORY ANALYSIS REPORT & CHAIN OF CUSTODY FORMS
TRC INSPECTOR LICENSES/CERTIFICATIONS
LABORATORY ACCREDITATIONS

EXECUTIVE SUMMARY

TRC Environmental Corporation (TRC) of Windsor, Connecticut was retained by the Town of New Milford (Town) to conduct a limited inspection for asbestos containing materials (ACM) and lead in paint (inspection) at the John Pettibone Elementary School (School). The Town is currently in the process of repairing/repainting various areas in the school. The inspection was conducted throughout the school, with the exception of the Board of Education section, the Gym and the Mechanical spaces and underground tunnels.

The inspection was conducted by Bryce Aston and Dave Webster of TRC on January 18th and 19th of 2017.

Additional Notes:

- *The screening did not include any investigation work to identify PCB containing materials (building caulking/glazings).*
- *All TRC and laboratory certifications/licenses can be found in the Attachments.*

LIMITED INSPECTION FOR ACM:

The limited inspection was performed by State of Connecticut licensed/EPA-trained asbestos inspectors in accordance with USEPA AHERA protocols. *Note: TRC did not use destructive techniques to access areas where hidden suspect ACM may have been present.* Bulk samples of suspect materials located in accessible areas were collected, properly transferred using chain-of-custody forms, and were brought to TRC's laboratory for analysis via polarized light microscopy (PLM) with visual area estimate (vae) techniques (EPA 600/R-93/116). Select non-friable organically bound (NOB) material samples (i.e. window caulk/glaze, mastics, etc.) were prepared for PLM analysis by utilizing gravimetric reduction (gr) techniques to reduce binder matrix interference and allow for more accurate identification and quantification of any asbestos content in accordance with EPA and CTDPH analytical protocols. TRC's laboratory is a CTDPH/NVLAP accredited laboratory for asbestos analysis via (PLM).

Limited asbestos inspection data can be found in Tables 1-3. Corresponding laboratory results and associated chain of custody forms can be found in the Attachments.

LIMITED INSPECTION FOR LEAD IN PAINT:

The limited inspection was performed by State of Connecticut licensed/EPA-trained lead inspectors and included a screening of various painted components located on the interior of the above mention areas in the school. The painted surfaces were analyzed on-site via x-ray fluorescence (XRF) utilizing a Thermo-Scientific XLP-301A analyzer.

Detailed results of the limited lead inspection can be found on the pages following Table 3.

CONDITIONS AND LIMITATIONS-DISCLAIMER:

TRC has performed this Limited Inspection for ACM and Lead in Paint in a manner consistent with commonly accepted industry standards and in accordance with the TRC proposal dated January 10, 2017 (the "Proposal"). The results reported are true and correct to the best of TRC's knowledge, and within the limitations of the instrumentation and protocols used in accordance with the Proposal. The results and opinions in this report, based solely on the conditions found at the subject property on the date(s) of the evaluation, are valid only on that/those date(s). TRC assumes no obligation to advise the client of any changes in any real or potential hazards and/or quantities & state of items at the subject site beyond the date(s) of the evaluation.

Data provided in this Inspection Report is for informational purposes only. Under no circumstances shall this information be the sole means for determining the presence and locations of all ACM and/or Lead found at the subject site and/or for bidding purposes.

TABLE 1
BULK SAMPLE SUMMARY OF SUSPECT ACM
JOHN PETTIBONE ELEMENTARY SCHOOL
NEW MILFORD, CONNECTICUT

Sample #	Sample Location	Type of Homogenous Material	% and Type of Asbestos
1	A side hallway entry by cafeteria	Yellow mastic associated with FT1	ND
1		FT 1- White 12x12 floor tile	ND
2*	A side hallway entry by cafeteria	Yellow mastic associated with FT1	ND
2*		FT 1- White 12x12 floor tile	ND
3	A side entry hallway by cafeteria	Black mastic associated with FT2	10% Chrysotile
3		FT 2- Green 9x9 floor tile	10% Chrysotile
4	A side entry hallway by cafeteria	Black mastic associated with FT2	NA/PS
4		FT 2- Green 9x9 floor tile	NA/PS
5	Hallway corridor by cafeteria	Yellow mastic associated with FT3	ND
5		FT 3- Light salmon colored 12x 12 floor tile	ND
6*	Hallway corridor by cafeteria	Yellow mastic associated with FT3	ND
6*		FT 3- Light salmon colored 12x 12 floor tile	ND
7	Cafeteria	Black mastic associated with FT4	ND
7		FT 4- Dark blue 12x12 floor tile	ND
8*	Cafeteria	Black mastic associated with FT4	ND
8*		FT 4- Dark blue 12x12 floor tile	ND
9	Cafeteria	Black mastic associated with FT5	ND
9		FT 5- Turquoise 12x12 floor tile	ND
10*	Cafeteria	Black mastic associated with FT5	ND
10*		FT 5- Turquoise 12x12 floor tile	ND
11	Cafeteria	Yellow mastic associated with FT6	ND
11		FT 6- Cream / tan colored 12 x12 floor tile	ND
12*	Cafeteria	Yellow mastic associated with FT6	ND
12*		FT 6- Cream / tan colored 12 x12 floor tile	ND
13	Workshop	Yellow mastic associated with FT7	ND
13		FT 7- Light green grainy 12x12 floor tile	ND
14*	Workshop	Yellow mastic associated with FT7	ND
14*		FT 7- Light green grainy 12x12 floor tile	ND
15	Rm 29	FT 8- Beige 9x9 floor tile	10% Chrysotile
16	Rm 29	FT 8- Beige 9x9 floor tile	NA/PS
17	Assistant principals office	FT 9- Dark grey 9x9 floor tile	10% Chrysotile
18	Assistant principals office	FT 9- Dark grey 9x9 floor tile	NA/PS
19	Rm 3	Black mastic associated with FT10	10% Chrysotile
19		FT 10- Red 9x9 floor tile	10% Chrysotile

Side A=Street Address Side; Sides B, C, D follow clockwise

* Analyzed by EPA/600/R-93/116 with gravimetric reduction

NA/PVA Not analyzed/positive via inseparable association with a confirmed positive ACM

NA/PS Not analyzed/positive stop, homogeneous to sample proven to contain asbestos

ND Non-detected, less than 1%

+ Although found to be negative by analysis, material is homogeneous to a determined ACM and therefore must be considered positive

1 Result confirmed by TEM analyses

** Quantified by PLM Point Counting techniques

TABLE 1
BULK SAMPLE SUMMARY OF SUSPECT ACM
JOHN PETTIBONE ELEMENTARY SCHOOL
NEW MILFORD, CONNECTICUT

Sample #	Sample Location	Type of Homogenous Material	% and Type of Asbestos
20	Rm 3	Black mastic associated with FT10	NA/PS
20		FT 10- Red 9x9 floor tile	NA/PS
21	Rm 31	Yellow mastic associated with FT11	ND
21		FT 11- Light blue 12x12 floor tile	ND
22*	Rm 31	Yellow mastic associated with FT11	ND
22*		FT 11- Light blue 12x12 floor tile	ND
23	Serving Area	Brown glue associated with CB1	ND
23		CB 1- Tan cove base	ND
24*	Serving Area	Brown glue associated with CB1	ND
24*		CB 1- Tan cove base	ND
25	Dish washing	Tan glue associated with CB2	ND
25		CB 2- Brown cove base	ND
26*	Dish washing	Tan glue associated with CB2	ND
26*		CB 2- Brown cove base	ND
27	Rm 31	Tan glue associated with CB3	ND
27		CB 3- Blue cove base	ND
28*	Rm 31	Tan glue associated with CB3	ND
28*		CB 3- Blue cove base	ND
29	Rm 141 A	Tan glue associated with CB4	ND
29		CB 4- Dark blue cove base	ND
30*	R 141 A	Tan glue associated with CB4	ND
30*		CB 4- Dark blue cove base	ND
31	Library	White glue associated with CB5	ND
31		CB 5- Grey cove base	ND
32*	Library	White glue associated with CB5	ND
32*		CB 5- Grey cove base	ND
33	Hallway by A/V storage	Tan glue associated with CB6	ND
33		CB 6- Light grey cove base	ND
34*	Hallway by A/V storage	Tan glue associated with CB6	ND
34*		CB 6- Light grey cove base	ND
35	Assistant principals office	Tan glue associated with CB7	ND
35		CB 7- Black cove base	ND
36*	Assistant principals office	Tan glue associated with CB7	ND
36*		CB 7- Black cove base	ND

Side A=Street Address Side; Sides B, C, D follow clockwise

* Analyzed by EPA/600/R-93/116 with gravimetric reduction

NA/PVA Not analyzed/positive via inseparable association with a confirmed positive ACM

NA/PS Not analyzed/positive stop, homogeneous to sample proven to contain asbestos

ND Non-detected, less than 1%

+ Although found to be negative by analysis, material is homogeneous to a determined ACM and therefore must be considered positive

1 Result confirmed by TEM analyses

** Quantified by PLM Point Counting techniques

TABLE 1
BULK SAMPLE SUMMARY OF SUSPECT ACM
JOHN PETTIBONE ELEMENTARY SCHOOL
NEW MILFORD, CONNECTICUT

Sample #	Sample Location	Type of Homogenous Material	% and Type of Asbestos
37	Rm 141 A	CG 1- Yellow carpet glue under carpet	ND
38*	Rm 141 A	CG 1- Yellow carpet glue under carper	ND
39	Rm 22AA	CG 2- Green carpet glue under carpet	ND
40*	Rm 22AA	CG 2- Green carpet glue under carpet	ND
41	Library	CG 3- Light green carpet glue under carpet	ND
42*	Library	CG 3- Light green carpet glue under carpet	ND
43	Rm 32	CG 4- Green carpet glue under carpet	ND
44*	Rm 32	CG 4- Green carpet glue under carpet	ND
45	Serving area	SHR 1- White sheet rock	ND
46	Serving area	SHR 1- White sheet rock	ND
47	Rm 31	SHR 1- White sheet rock	ND
48	Rm 31	SHR 1- White sheet rock	ND
49	Hallway by Rm 32	SHR 1- White sheet rock	ND
50	Rm 9 AA	SHR 1- White sheet rock	ND
51	Rm 9 AA	SHR 1- White sheet rock	ND
52	Serving area	JC 1- Joint compound associated w/ SHR 1	ND
53	Serving area	JC 1- Joint compound associated w/ SHR 1	ND
54	Rm 31	JC 1- Joint compound associated w/ SHR 1	ND
55	Rm 31	JC 1- Joint compound associated w/ SHR 1	ND
56	Assistant principals office	JC 1- Joint compound associated w/ SHR 1	ND
57	Assistant principals office	JC 1- Joint compound associated w/ SHR 1	ND
58	Assistant principals office	JC 1- Joint compound associated w/ SHR 1	ND
59	Rm 32	P 1- White plaster skim coat	ND
59		P 1- Grey plaster base coat	ND
60	Rm 32	P 1- White plaster skim coat	ND
60		P 1- Grey plaster base coat	ND
61	Rm 33	P 1- White plaster skim coat	ND
61		P 1- Grey plaster base coat	ND
62	Rm 33	P 1- White plaster skim coat	ND
62		P 1- Grey plaster base coat	ND
63	Rm 27	P 1- White plaster skim coat	ND
63		P 1- Grey plaster base coat	ND
64	Rm 27	P 1- White plaster skim coat	ND
64		P 1- Grey plaster base coat	ND

Side A=Street Address Side; Sides B, C, D follow clockwise

* Analyzed by EPA/600/R-93/116 with gravimetric reduction

NA/PVA Not analyzed/positive via inseparable association with a confirmed positive ACM

NA/PS Not analyzed/positive stop, homogeneous to sample proven to contain asbestos

ND Non-detected, less than 1%

+ Although found to be negative by analysis, material is homogeneous to a determined ACM and therefore must be considered positive

1 Result confirmed by TEM analyses

** Quantified by PLM Point Counting techniques

TABLE 1
BULK SAMPLE SUMMARY OF SUSPECT ACM
JOHN PETTIBONE ELEMENTARY SCHOOL
NEW MILFORD, CONNECTICUT

Sample #	Sample Location	Type of Homogenous Material	% and Type of Asbestos
65	Rm 28	P 1- White plaster skim coat	ND
65		P 1- Grey plaster base coat	ND
66	Rm 32	PB 1- Tan press board on wall	ND
67	Rm 32	PB 1- Tan press board on wall	ND
68	Library	WG 1- Tan glue on wall	ND
69*	Library	WG 1- Tan glue on wall	ND
70	Library	WG 2- Blue glue on wall	ND
71*	Library	WG 2- Blue glue on wall	ND
72	Hallway by Rm 32	GD 1- Brown glue-dob above CT 3	ND
73*	Hallway by Rm 32	GD 1- Brown glue-dob above CT 3	ND
74	Rm 22	GD 2- Black glue-dob	ND
75*	Rm 22	GD 2- Black glue-dob	ND
76	Washing area	CT 1- White 2x4 patterned pinhole ceiling tile	ND
77	Washing area	CT 1- White 2x4 patterned pinhole ceiling tile	ND
78	Kitchen bathroom	CT 2- White 2x4 pinhole / wormhole 2x4 ceiling tile	ND
79	Kitchen bathroom	CT 2- White 2x4 pinhole / wormhole 2x4 ceiling tile	ND
80	Hallway o/s of gym	CT 3- White 24 pinhole ceiling tile	ND
81	Hallway o/s of gym	CT 3- White 24 pinhole ceiling tile	ND
82	Hallway by library	CT 4- White spaghetti 2x8 ceiling tile panels attached to concrete decking	ND
83	Hallway by library	CT 4- White spaghetti 2x8 ceiling tile panels attached to concrete decking	ND
84	Library	CT 5- White chalky 2x2 ceiling tile w/ wormhole pattern	ND
85	Library	CT 5- White chalky 2x2 ceiling tile w/ wormhole pattern	ND
86	Library	CT 6- White 6x6 inch pinhole ceiling tile	ND
87	Library	CT 6- White 6x6 inch pinhole ceiling tile	ND
88	Exit way by Rm 29	CT 7- White 2x4 sporadic pinhole ceiling tile	ND
89	Exit way by Rm 29	CT 7- White 2x4 sporadic pinhole ceiling tile	ND
90	Rm 9 AA / office	MF 1-Grey 2 inch mudded elbow	80% Chrysotile
91	Rm 9AA / office	MF 1-Grey 2 inch mudded elbow	NA/PS
92	Rm 9AA / office	MF 1-Grey 2 inch mudded elbow	NA/PS
93	Rm 9AA /office	TSI 1- White 2 inch air cell insulation	60% Chrysotile

Side A=Street Address Side; Sides B, C, D follow clockwise

* Analyzed by EPA/600/R-93/116 with gravimetric reduction

NA/PVA Not analyzed/positive via inseparable association with a confirmed positive ACM

NA/PS Not analyzed/positive stop, homogeneous to sample proven to contain asbestos

ND Non-detected, less than 1%

+ Although found to be negative by analysis, material is homogeneous to a determined ACM and therefore must be considered positive

1 Result confirmed by TEM analyses

** Quantified by PLM Point Counting techniques

TABLE 1
BULK SAMPLE SUMMARY OF SUSPECT ACM
JOHN PETTIBONE ELEMENTARY SCHOOL
NEW MILFORD, CONNECTICUT

Sample #	Sample Location	Type of Homogenous Material	% and Type of Asbestos
94	Rm 9AA /office	TSI 1- White 2 inch air cell insulation	NA/PS
95	Rm 9AA /office	TSI 1- White 2 inch air cell insulation	NA/PS
96	Hallway adjacent to Rm 31	RFDI 1- Roof drain insulation	30% Chrysotile
97	Hallway adjacent to Rm 31	RFDI 1- Roof drain insulation	NA/PS
98	Hallway adjacent to Rm 31	RFDI 1- Roof drain insulation	NA/PS
99	Hallway adjacent to Rm 31	RFDE 1- Grey mudded elbow off roof drain	60% Chrysotile
100	Hallway adjacent to Rm 31	RFDE 1- Grey mudded elbow off roof drain	NA/PS
101	Hallway adjacent to Rm 31	RFDE 1- Grey mudded elbow off roof drain	NA/PS

Side A=Street Address Side; Sides B, C, D follow clockwise

* Analyzed by EPA/600/R-93/116 with gravimetric reduction

NA/PVA Not analyzed/positive via inseparable association with a confirmed positive ACM

NA/PS Not analyzed/positive stop, homogeneous to sample proven to contain asbestos

ND Non-detected, less than 1%

+ Although found to be negative by analysis, material is homogeneous to a determined ACM and therefore must be considered positive

1 Result confirmed by TEM analyses

****** Quantified by PLM Point Counting techniques

TABLE 2
IDENTIFIED/CONFIRMED ACM
JOHN PETTIBONE ELEMENTARY SCHOOL
NEW MILFORD, CONNECTICUT

Material/Confirmed ACM	MATERIAL LOCATION(S)	NESHAP & AHERA CATEGORY
FT 2- Green 9x9 floor tile and associated black mastic	<ul style="list-style-type: none"> • Front entry hallway and all main hallways (beneath either by FT1, FT3, or FT6) • Rooms 4B, 5, 6, 9 (beneath carpet) • Teacher’s Workroom (beneath carpet) • Key Area #'s 9AA, 10AA, 14AA (beneath carpet) 	<p>Category I Non-Friable</p> <p>Miscellaneous</p>
FT 8- Beige 9x9 floor tile	<ul style="list-style-type: none"> • Throughout Youth Agency (Rooms 21-30A) (beneath carpet) • Room 8 	<p>Category I Non-Friable</p> <p>Miscellaneous</p>
FT 9- Dark grey 9x9 floor tile	<ul style="list-style-type: none"> • Assistant principals office (beneath carpet) 	<p>Category I Non-Friable</p> <p>Miscellaneous</p>
FT 10- Red 9x9 floor tile and associated black mastic	<ul style="list-style-type: none"> • Rooms 3,7 (beneath carpet) 	<p>Category I Non-Friable</p> <p>Miscellaneous</p>
MF 1-Grey 2 inch mudded elbow	<ul style="list-style-type: none"> • Room 9 AA / office 	<p>Friable TSI</p>
TSI 1- White 2 inch air cell insulation	<ul style="list-style-type: none"> • Room 9AA /office 	<p>Friable TSI</p>
RFDI 1- Roof drain insulation	<ul style="list-style-type: none"> • Hallway adjacent to Rm 31 	<p>Friable TSI</p>
RFDE 1- Grey mudded elbow off roof drain	<ul style="list-style-type: none"> • Hallway adjacent to Rm 31 	<p>Friable TSI</p>

AHERA Categories = thermal system insulation (TSI), surfacing material or miscellaneous
NESHAP Categories = friable, category I non-friable or category II non-friable
Friable = crumbled, pulverized or reduced to powder by hand pressure when dry
Category I Non-friable = packings, gaskets, resilient floor covering and asphalt roofing
Category II Non-friable = all non-friable that is not Category I

TABLE 3
CONFIRMED NON-ACM (<1%)
JOHN PETTIBONE ELEMENTARY SCHOOL
NEW MILFORD, CONNECTICUT

CONFIRMED NON-ACM MATERIALS
<i>See material locations on the Building sketches found in the Attachments</i>
Yellow mastic associated with FT1*
FT 1- White 12x12 floor tile*
Yellow mastic associated with FT3*
FT 3- Light salmon colored 12x 12 floor tile*
Black mastic associated with FT4
FT 4- Dark blue 12x12 floor tile
Black mastic associated with FT5
FT 5- Turquoise 12x12 floor tile
Yellow mastic associated with FT6*
FT 6- Cream / tan colored 12 x12 floor tile*
Yellow mastic associated with FT7
FT 7- Light green grainy 12x12 floor tile
Yellow mastic associated with FT11
FT 11- Light blue 12x12 floor tile
Brown glue associated with CB1
CB 1- Tan cove base
Tan glue associated with CB2
CB 2- Brown cove base
Tan glue associated with CB3
CB 3- Blue cove base
Tan glue associated with CB4
CB 4- Dark blue cove base
White glue associated with CB5
CB 5- Grey cove base
Tan glue associated with CB6
CB 6- Light grey cove base
Tan glue associated with CB7
CB 7- Black cove base
CG 1- Yellow carpet glue under carpet*
CG 2- Green carpet glue under carpet*
CG 3- Light green carpet glue under carpet*
CG 4- Green carpet glue under carpet*
SHR 1- White sheet rock
JC 1- Joint compound associated w/ SHR 1
P 1- White plaster skim coat
P 1- Grey plaster base coat
PB 1- Tan press board on wall
WG 1- Tan glue on wall
WG 2- Blue glue on wall
GD 1- Brown glue-dob above CT 3
GD 2- Black glue-dob

*Material associated/covering confirmed ACM (FT 2, 8, 9, or 10)

TABLE 3
CONFIRMED NON-ACM (<1%)
JOHN PETTIBONE ELEMENTARY SCHOOL
NEW MILFORD, CONNECTICUT

CONFIRMED NON-ACM MATERIALS
<i>See material locations on the Building sketches found in the Attachments</i>
CT 1- White 2x4 patterned pinhole ceiling tile
CT 2- White 2x4 pinhole / wormhole 2x4 ceiling tile
CT 3- White 24 pinhole ceiling tile
CT 4- White spaghetti 2x8 ceiling tile panels attached to concrete decking
CT 5- White chalky 2x2 ceiling tile w/ wormhole pattern
CT 6- White 6x6 inch pinhole ceiling tile
CT 7- White 2x4 sporadic pinhole ceiling tile

*Material associated/covering confirmed ACM (FT 2, 8, 9, or 10)



Lead Based Paint Measurement Summary Table

Device: Niton XLP301-A (Serial #24792) X-Ray Fluorescence (XRF) Spectrum Analyzer										
Source: Cd-109 (40mCi)										
Site: John Pettibone Elementary School, New Milford, CT										
Project # : 270902.0001										
Date(s): January 19, 2017										
Inspector: Bryce Aston (CT# 001838)										
Number	Room	Side	Structure	Feature	Material	Color	Condition	Reading (mg/cm2)	Precision (mg/cm2)	Depth Index
1	Self Calibration							6.8	0.0	
2	3.6 Calibration							3.4	0.2	1.3
3	0.3 Calibration							0.3	0.0	1.1
4	3.6 Calibration							3.6	0.2	1.3
5	cafeteria	A	i beam		Metal	Green	INTACT	0.2	0.1	3.2
6	cafeteria	A	Wall		Block	Green	INTACT	0.0	0.0	1.0
7	cafeteria	D	Door	Casing	Metal	Green	INTACT	0.0	0.0	1.6
8	cafeteria lunch line area	C	Wall	--	Sheetrock	Blue	INTACT	0.0	0.0	1.0
9	cafeteria lunch line area	B	Wall	--	Sheetrock	Blue	INTACT	0.0	0.0	3.6
10	cafeteria lunch line area	D	Wall	--	Brick	Tan/Beige	INTACT	0.0	0.0	1.3
11	kitchen prep area	D	Wall	--	Brick	Tan/Beige	INTACT	0.0	0.0	3.1
12	kitchen prep area	A	Wall	--	Sheetrock	Tan/Beige	INTACT	0.0	0.0	1.0
13	kitchen prep area	A	Door	Casing	Metal	Tan/Beige	INTACT	0.0	0.0	1.3
14	facility maint	A	Door	Casing	Metal	Tan/Beige	INTACT	0.0	0.0	1.3
15	facility maint	A	Wall	--	Sheetrock	Yellow	INTACT	0.0	0.0	1.0
16	VOID									
17	facility maintenance	B	Wall	--	Block	Yellow	INTACT	0.6	0.4	8.1
18	facility maintenance	D	radiator cover	--	Metal	Yellow	INTACT	0.0	0.0	3.1
19	facility maintenance	D	beam	--	Metal	White	INTACT	0.3	0.1	3.9
20	office	A	Wall	--	Brick	Tan/Beige	INTACT	0.0	0.0	3.6

OSHA refers to "Lead Paint," as paint found to contain any detectable amount of lead via X-Ray Fluorescence.

Side A = Street side; Sides B,C,D follow clockwise



Lead Based Paint Measurement Summary Table

Site: John Pettibone Elementary School, New Milford, CT										
Project # : 270902.0001										
Date(s): January 19, 2017										
Inspector: Bryce Aston (CT# 001838)										
Number	Room	Side	Structure	Feature	Material	Color	Condition	Reading (mg/cm2)	Precision (mg/cm2)	Depth Index
21	office	B	Wall	--	Brick	Tan/Beige	INTACT	0.0	0.0	1.0
22	office	B	radiator cover	--	Metal	Tan/Beige	INTACT	0.0	0.0	1.2
23	office	D	int glass window	Casing	Metal	Green	INTACT	0.0	0.0	1.5
24	nurses office	D	Wall	--	Plaster	Blue	INTACT	0.1	0.0	5.0
25	nurses office	A	Wall	--	Plaster	Blue	INTACT	0.2	0.1	4.9
26	nurses office	A	Door	Casing	Metal	Green	INTACT	0.1	0.0	2.9
27	Room 2	A	Door	Casing	Metal	Tan/Beige	INTACT	0.0	0.0	1.1
28	Room 2	A	Door	Casing	Wood	Tan/Beige	INTACT	0.0	0.0	2.7
29	Room 2	B	Wall	--	Panel	Green	INTACT	0.0	0.0	4.2
30	Room 2	C	Wall	--	Plaster	Green	INTACT	0.0	0.0	1.3
31	Room 2	D	beam	--	Metal	White	INTACT	0.2	0.1	3.6
32	Room 7	B	beam	--	Metal	White	INTACT	0.3	0.1	4.3
33	Room 7	A	Wall	--	Plaster	White	INTACT	0.0	0.0	4.8
34	Room 7	D	Wall	--	Panel	pink	INTACT	0.0	0.0	6.2
35	Room 7	A	Cabinet	Door	Wood	White	INTACT	0.0	0.0	3.3
36	Room 7	A	Cabinet	Casing	Wood	White	INTACT	0.0	0.0	2.3
37	Room 7	D	Door	Casing	Wood	Tan/Beige	INTACT	0.0	0.0	3.1
38	Room 7	D	Door	Jamb	Wood	Tan/Beige	INTACT	0.0	0.0	1.3
39	Room 8	B	Door	Jamb	Metal	Tan/Beige	INTACT	0.0	0.0	1.0
40	Room 8	B	Door	Casing	Wood	Tan/Beige	INTACT	0.0	0.0	1.0
41	Room 8	A	Wall	--	Plaster	Green	INTACT	0.0	0.0	1.5
42	Room 8	C	Wall	--	Plaster	Green	INTACT	0.0	0.0	1.0
43	Room 8	C	Cabinet	Door	Wood	Blue	INTACT	0.0	0.0	1.0

OSHA refers to "Lead Paint," as paint found to contain any detectable amount of lead via X-Ray Fluorescence.

Side A = Street side; Sides B,C,D follow clockwise



Lead Based Paint Measurement Summary Table

Site: John Pettibone Elementary School, New Milford, CT										
Project # : 270902.0001										
Date(s): January 19, 2017										
Inspector: Bryce Aston (CT# 001838)										
Number	Room	Side	Structure	Feature	Material	Color	Condition	Reading (mg/cm2)	Precision (mg/cm2)	Depth Index
44	hallway adjacent to Room 6	B	lockers	Door	Metal	Blue	INTACT	0.0	0.0	1.0
45	hallway adjacent to Room 6	D	lockers	Door	Metal	Blue	INTACT	0.1	0.0	1.0
46	library media room	B	Wall	--	Sheetrock	Blue	INTACT	0.0	0.0	1.0
47	library media room	A	Wall	--	Sheetrock	Blue	INTACT	0.0	0.0	1.0
48	library media room	A	column	--	Sheetrock	Brown	INTACT	0.0	0.0	2.0
49	library media room	A	column	--	Sheetrock	Brown	INTACT	0.0	0.0	1.0
50	library media room	A	support pole	--	Metal	Blue	INTACT	0.0	0.0	1.5
51	library media room	D	int window	Casing	Metal	Blue	INTACT	0.0	0.0	1.3
52	Room 32	A	Wall	--	Plaster	White	INTACT	0.0	0.0	1.2
53	Room 32	C	Wall	--	Plaster	White	INTACT	0.0	0.0	1.0
54	Room 32	C	Cabinet	Door	Wood	Brown	INTACT	0.0	0.0	2.4
55	Room 32	C	Cabinet	Casing	Wood	Brown	INTACT	0.0	0.0	1.6
56	Room 32	D	beam	--	Metal	White	INTACT	0.2	0.1	5.5
57	Room 35	B	beam	--	Metal	White	INTACT	0.3	0.1	4.2
58	Room 35	A	Wall	--	Plaster	Tan/Beige	INTACT	0.2	0.1	4.5
59	Room 35	C	Wall	--	Plaster	Tan/Beige	INTACT	0.4	0.1	6.1
60	Room 38	A	Wall	--	Plaster	Tan/Beige	INTACT	0.0	0.0	5.0
61	Room 38	C	Wall	--	Plaster	Tan/Beige	INTACT	0.0	0.0	1.0
62	Room 38	B	Door	Casing	Wood	Green	INTACT	0.0	0.0	2.4
63	Room 38	B	Door	Jamb	Wood	Tan/Beige	INTACT	0.0	0.0	1.3
64	hallway adjacent to Room 38	B	lockers	Door	Metal	Green	INTACT	0.0	0.0	1.0
65	hallway adjacent to Room 38	D	lockers	Door	Metal	Green	INTACT	0.0	0.0	1.0
66	hallway adjacent to staff room	A	Wall	--	Block	Pink	INTACT	0.0	0.0	2.3

OSHA refers to "Lead Paint," as paint found to contain any detectable amount of lead via X-Ray Fluorescence.

Side A = Street side; Sides B,C,D follow clockwise

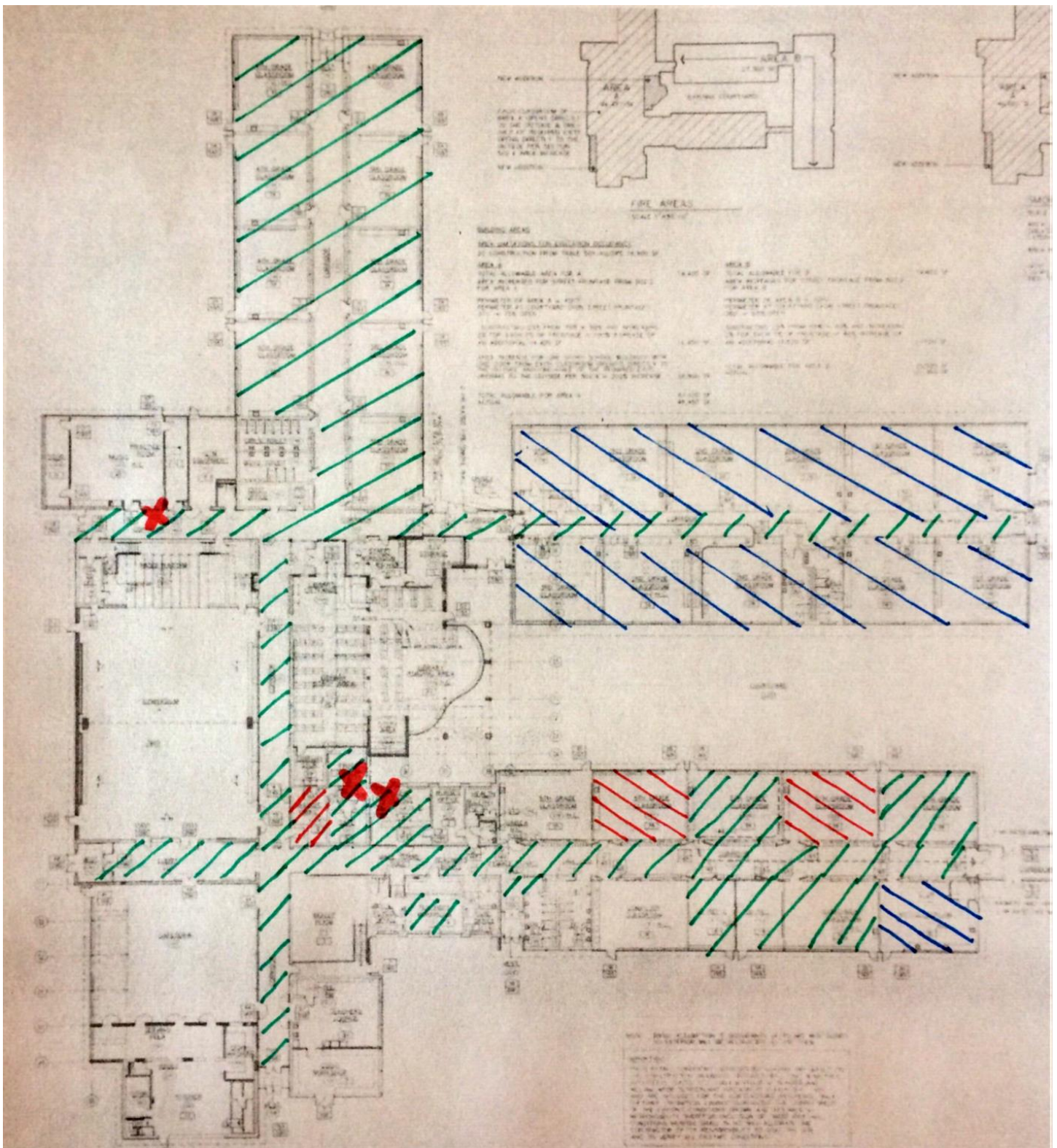


Lead Based Paint Measurement Summary Table

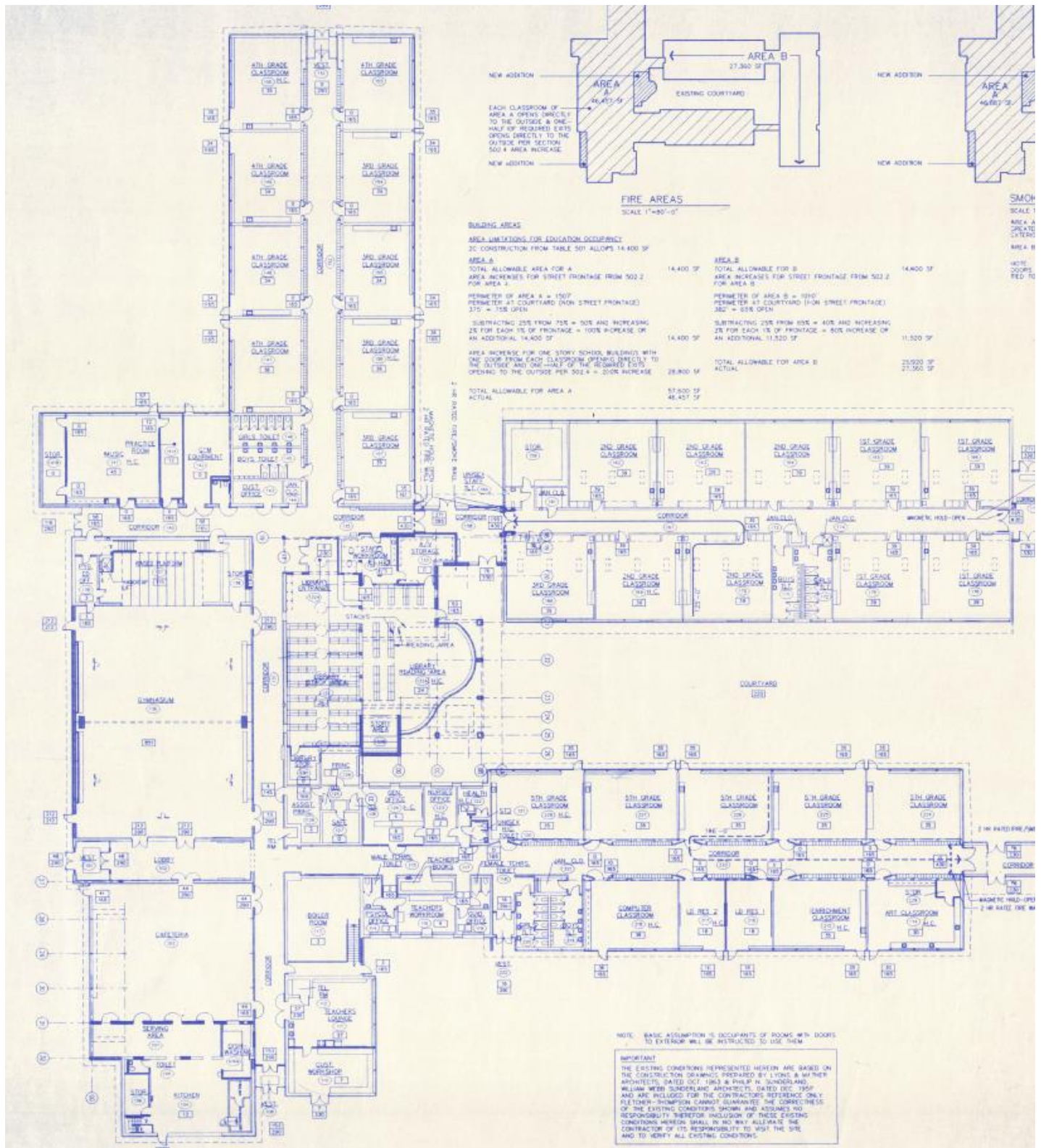
Site: John Pettibone Elementary School, New Milford, CT										
Project # : 270902.0001										
Date(s): January 19, 2017										
Inspector: Bryce Aston (CT# 001838)										
Number	Room	Side	Structure	Feature	Material	Color	Condition	Reading (mg/cm2)	Precision (mg/cm2)	Depth Index
67	hallway adjacent to staff room	C	Wall	--	Block	Pink	INTACT	0.0	0.0	1.0
68	hallway adjacent to staff room	B	Door	Casing	Metal	Tan/Beige	INTACT	0.0	0.0	1.0
69	hallway adjacent to staff room	B	Door	--	Metal	Tan/Beige	INTACT	0.0	0.0	1.4
70	Room 27	B	Wall	--	Plaster	Green	INTACT	0.0	0.0	2.1
71	Room 27	D	Wall	--	Plaster	Green	INTACT	0.0	0.0	2.5
72	Room 27	D	Cabinet	Casing	Wood	Tan/Beige	INTACT	0.0	0.0	4.5
73	Room 27	A	support pole	--	Metal	White	INTACT	0.4	0.1	1.6
74	Room 28	A	Door	Casing	Metal	Tan/Beige	INTACT	0.0	0.0	1.7
75	Room 28	A	Door	Jamb	Metal	Tan/Beige	INTACT	0.0	0.0	1.2
76	Room 28	B	Wall	--	Plaster	Tan/Beige	INTACT	0.0	0.0	1.5
77	Room 28	D	Wall	--	Plaster	Tan/Beige	INTACT	0.0	0.0	1.3
78	hallway adjacent to Room 28	D	Wall	--	Block	Yellow	INTACT	0.0	0.0	3.0
79	hallway adjacent to Room 28	B	Wall	--	Block	Yellow	INTACT	0.0	0.0	1.5
80	Room 31	B	Wall	--	Brick	Tan/Beige	INTACT	0.0	0.0	2.7
81	Room 31	C	Wall	--	Sheetrock	Tan/Beige	INTACT	0.0	0.0	1.0
82	Room 31	A	Wall	--	Sheetrock	Blue	INTACT	0.0	0.0	1.0
83	Room 31	A	Wall	--	Sheetrock	Blue	INTACT	0.0	0.0	1.0
84	Room 31	B	Door	Casing	Metal	Tan/Beige	INTACT	0.0	0.0	1.1
85	Room 31	B	Door	Jamb	Metal	Tan/Beige	INTACT	0.0	0.0	1.9
86	3.6 Calibration							3.6	0.2	1.3
87	0.3 Calibration							0.3	0.0	1.1
88	3.6 Calibration							3.8	0.2	1.3

OSHA refers to "Lead Paint," as paint found to contain any detectable amount of lead via X-Ray Fluorescence.

Side A = Street side; Sides B,C,D follow clockwise



-  -> FT2- Green 9x9 Floor Tile and Black Mastic
-  -> FT8- Beige 9x9 Floor Tile
-  -> FT9- Dark Grey 9x9 Floor Tile
-  -> FT10- Red 9x9 Floor Tile and Black Mastic
- XX** -> MF/TSI/RFD- Miscellaneous Insulations



BULK ASBESTOS ANALYSIS REPORT

CLIENT: Town of New Milford

Lab Log #: 0049818
 Project #: 270902.0002.0000
 Date Received: 01/19/2017
 Date Analyzed: 01/20/2017

Site: JPS School, New Milford, CT

POLARIZED LIGHT MICROSCOPY by EPA 600/R-93/116

Sample No.	Color	Homogenous	Multi-Layered	Layer No.	Other Matrix Materials	Asbestos %	Asbestos Type
1	Yellow (mastic)	No	Yes	1	---	ND	None
1	White (tile)	No	Yes	2	---	ND	None
2♣	Yellow (mastic)	No	Yes	1	---	ND	None
2♣	White (tile)	No	Yes	2	---	ND	None
3	Black (mastic)	No	Yes	1	---	10%	Chrysotile
3	Green (tile)	No	Yes	2	---	10%	Chrysotile
4	--	--	--	--	--	NA/PS	--
4	--	--	--	--	--	NA/PS	--
5	Yellow (mastic)	No	Yes	1	---	ND	None
5	Light Salmon (tile)	No	Yes	2	---	ND	None
6♣	Yellow (mastic)	No	Yes	1	---	ND	None
6♣	Light Salmon (tile)	No	Yes	2	---	ND	None
7	Yellow (mastic)	No	Yes	1	---	ND	None
7	Dark Blue (tile)	No	Yes	2	---	ND	None
8♣	Yellow (mastic)	No	Yes	1	---	ND	None
8♣	Dark Blue (tile)	No	Yes	2	---	ND	None
9	Yellow (mastic)	No	Yes	1	---	ND	None
9	Turquoise (tile)	No	Yes	2	---	ND	None

TRC LABORATORY ASBESTOS ANALYTICAL ACCREDITATIONS

NVLAP Lab Code 101424-0 AIHA-LAP, LLC #100122 CT #PH-0426 ME LA-0075, LB-0071 MA #AA000052 NY #10980 WV# LT000411
 RI #AAL-007 TX #300354 VT #AL014538 LA#05011 VA #3333 000283 AZ #A20944 HI #L-09-004 NJ #CT004 CA #2907
 CO# AL-15020 PHIL# 461 PA#68-03387

POLARIZED LIGHT MICROSCOPY by EPA 600/R-93/116

Sample No.	Color	Homogenous	Multi-Layered	Layer No.	Other Matrix Materials	Asbestos %	Asbestos Type
10♣	Yellow (mastic)	No	Yes	1	---	ND	None
10♣	Turquoise (tile)	No	Yes	2	---	ND	None
11	Yellow (mastic)	No	Yes	1	---	ND	None
11	Cream/Tan (tile)	No	Yes	2	---	ND	None
12♣	Yellow (mastic)	No	Yes	1	---	ND	None
12♣	Cream/Tan (tile)	No	Yes	2	---	ND	None
13	Yellow (mastic)	No	Yes	1	---	ND	None
13	Light Green (tile)	No	Yes	2	---	ND	None
14♣	Yellow (mastic)	No	Yes	1	---	ND	None
14♣	Light Green (tile)	No	Yes	2	---	ND	None
15	Beige (tile)	Yes	No	--	---	10%	Chrysotile
16	--	--	--	--	--	NA/PS	--
17	Dark Grey (tile)	Yes	No	--	---	10%	Chrysotile
18	--	--	--	--	--	NA/PS	--
19	Beige (mastic)	No	Yes	1	---	10%	Chrysotile
19	Red (tile)	No	Yes	2	---	10%	Chrysotile
20	--	--	--	--	--	NA/PS	--
20	--	--	--	--	--	NA/PS	--
21	Yellow (mastic)	No	Yes	1	---	ND	None
21	Light Blue (tile)	No	Yes	2	---	ND	None
22♣	Yellow (mastic)	No	Yes	1	---	ND	None
22♣	Light Blue (tile)	No	Yes	2	---	ND	None
23	Tan/Brown (glue)	No	Yes	1	---	ND	None
23	Tan (cove base)	No	Yes	2	---	ND	None

TRC LABORATORY ASBESTOS ANALYTICAL ACCREDITATIONS

NVLAP Lab Code 101424-0 AIHA-LAP, LLC #100122 CT #PH-0426 ME LA-0075, LB-0071 MA #AA000052 NY #10980 WV#LT000411
 RI #AAL-007 TX #300354 VT #AL014538 LA#05011 VA #3333 000283 AZ #A20944 HI #L-09-004 NJ #CT004 CA #2907
 CO# AL-15020 PHIL# 461 PA#68-03387

POLARIZED LIGHT MICROSCOPY by EPA 600/R-93/116

Sample No.	Color	Homogenous	Multi-Layered	Layer No.	Other Matrix Materials	Asbestos %	Asbestos Type
24♣	Tan/Brown (glue)	No	Yes	1	---	ND	None
24♣	Tan (cove base)	No	Yes	2	---	ND	None
25	Tan (glue)	No	Yes	1	---	ND	None
25	Brown (cove base)	No	Yes	2	---	ND	None
26♣	Tan (glue)	No	Yes	1	---	ND	None
26♣	Brown (cove base)	No	Yes	2	---	ND	None
27	Tan (glue)	No	Yes	1	---	ND	None
27	Blue (cove base)	No	Yes	2	---	ND	None
28♣	Tan (glue)	No	Yes	1	---	ND	None
28♣	Blue (cove base)	No	Yes	2	---	ND	None
29	Tan (glue)	No	Yes	1	---	ND	None
29	Dark Blue (cove base)	No	Yes	2	---	ND	None
30♣	Tan (glue)	No	Yes	1	---	ND	None
30♣	Dark Blue (cove base)	No	Yes	2	---	ND	None
31	White (glue)	No	Yes	1	---	ND	None
31	Grey (cove base)	No	Yes	2	---	ND	None
32♣	White (glue)	No	Yes	1	---	ND	None
32♣	Grey (cove base)	No	Yes	2	---	ND	None
33	Tan (glue)	No	Yes	1	---	ND	None
33	Light Grey (cove base)	No	Yes	2	---	ND	None
34♣	Tan (glue)	No	Yes	1	---	ND	None
34♣	Light Grey (cove base)	No	Yes	2	---	ND	None
35	Tan (glue)	No	Yes	1	---	ND	None
35	Black (cove base)	No	Yes	2	---	ND	None

TRC LABORATORY ASBESTOS ANALYTICAL ACCREDITATIONS

NVLAP Lab Code 101424-0 AIHA-LAP, LLC #100122 CT #PH-0426 ME LA-0075, LB-0071 MA #AA000052 NY #10980 WV# LT000411
 RI #AAL-007 TX #300354 VT #AL014538 LA#05011 VA #3333 000283 AZ #A20944 HI #L-09-004 NJ #CT004 CA #2907
 CO# AL-15020 PHIL# 461 PA#68-03387

POLARIZED LIGHT MICROSCOPY by EPA 600/R-93/116

Sample No.	Color	Homogenous	Multi-Layered	Layer No.	Other Matrix Materials	Asbestos %	Asbestos Type
36♣	Tan (glue)	No	Yes	1	---	ND	None
36♣	Black (cove base)	No	Yes	2	---	ND	None
37	Yellow (glue)	Yes	No	--	---	ND	None
38♣	Yellow (glue)	Yes	No	--	---	ND	None
39	Green (glue)	Yes	No	--	---	ND	None
40♣	Green (glue)	Yes	No	--	---	ND	None
41	Light Green (glue)	Yes	No	--	---	ND	None
42♣	Light Green (glue)	Yes	No	--	---	ND	None
43	Green (glue)	Yes	No	--	---	ND	None
44♣	Green (glue)	Yes	No	--	---	ND	None
45	White (sheetrock)	Yes	No	--	2% cellulose	ND	None
46	White (sheetrock)	Yes	No	--	2% cellulose	ND	None
47	White (sheetrock)	Yes	No	--	2% cellulose	ND	None
48	White (sheetrock)	Yes	No	--	2% cellulose	ND	None
49	White (sheetrock)	Yes	No	--	2% cellulose	ND	None
50	White (sheetrock)	Yes	No	--	2% cellulose	ND	None
51	White (sheetrock)	Yes	No	--	2% cellulose	ND	None
52	White (joint compound)	Yes	No	--	---	ND	None
53	White (joint compound)	Yes	No	--	---	ND	None
54	White (joint compound)	Yes	No	--	---	ND	None
55	White (joint compound)	Yes	No	--	---	ND	None
56	White (joint compound)	Yes	No	--	---	ND	None
57	White (joint compound)	Yes	No	--	---	ND	None

TRC LABORATORY ASBESTOS ANALYTICAL ACCREDITATIONS

NVLAP Lab Code 101424-0 AIHA-LAP, LLC #100122 CT #PH-0426 ME LA-0075, LB-0071 MA #AA000052 NY #10980 WV #LT000411
 RI #AAL-007 TX #300354 VT #AL014538 LA#05011 VA #3333 000283 AZ #A20944 HI #L-09-004 NJ #CT004 CA #2907
 CO# AL-15020 PHIL# 461 PA#68-03387

POLARIZED LIGHT MICROSCOPY by EPA 600/R-93/116

Sample No.	Color	Homogenous	Multi-Layered	Layer No.	Other Matrix Materials	Asbestos %	Asbestos Type
58	White (joint compound)	Yes	No	--	---	ND	None
59	White (skim coat)	No	Yes	1	---	ND	None
59	Grey (base coat)	No	Yes	2	---	ND	None
60	White (skim coat)	No	Yes	1	---	ND	None
60	Grey (base coat)	No	Yes	2	---	ND	None
61	White (skim coat)	No	Yes	1	---	ND	None
61	Grey (base coat)	No	Yes	2	---	ND	None
62	White (skim coat)	No	Yes	1	---	ND	None
62	Brown (base coat)	No	Yes	2	---	ND	None
63	White (skim coat)	No	Yes	1	---	ND	None
63	Brown (base coat)	No	Yes	2	---	ND	None
64	White (skim coat)	No	Yes	1	---	ND	None
64	Brown (base coat)	No	Yes	2	---	ND	None
65	White (skim coat)	No	Yes	1	---	ND	None
65	Brown (base coat)	No	Yes	2	---	ND	None
66	Tan (press board)	Yes	No	--	99% cellulose	ND	None
67	Tan (press board)	Yes	No	--	99% cellulose	ND	None
68	Tan (glue)	Yes	No	--	---	ND	None
69♣	Tan (glue)	Yes	No	--	---	ND	None
70	Blue (glue)	Yes	No	--	---	ND	None
71♣	Blue (glue)	Yes	No	--	---	ND	None
72	Brown (glue daub)	Yes	No	--	---	ND	None
73♣	Brown (glue daub)	Yes	No	--	---	ND	None

TRC LABORATORY ASBESTOS ANALYTICAL ACCREDITATIONS

NVLAP Lab Code 101424-0 AIHA-LAP, LLC #100122 CT #PH-0426 ME LA-0075, LB-0071 MA #AA000052 NY #10980 WV#LT000411
 RI #AAL-007 TX #300354 VT #AL014538 LA#05011 VA #3333 000283 AZ #A20944 HI #L-09-004 NJ #CT004 CA #2907
 CO# AL-15020 PHIL# 461 PA#68-03387

POLARIZED LIGHT MICROSCOPY by EPA 600/R-93/116

Sample No.	Color	Homogenous	Multi-Layered	Layer No.	Other Matrix Materials	Asbestos %	Asbestos Type
74	Black (glue daub)	Yes	No	--	---	ND	None
75♣	Black (glue daub)	Yes	No	--	---	ND	None
76	White/Grey (ceiling tile)	Yes	No	--	10% cellulose 80% mineral wool	ND	None
77	White/Grey (ceiling tile)	Yes	No	--	10% cellulose 80% mineral wool	ND	None
78	White/Grey (ceiling tile)	Yes	No	--	10% cellulose 80% mineral wool	ND	None
79	White/Grey (ceiling tile)	Yes	No	--	10% cellulose 80% mineral wool	ND	None
80	White/Grey (ceiling tile)	Yes	No	--	5% cellulose 90% mineral wool	ND	None
81	White/Grey (ceiling tile)	Yes	No	--	5% cellulose 90% mineral wool	ND	None
82	Brown (ceiling tile)	Yes	No	--	40% cellulose	ND	None
83	Brown (ceiling tile)	Yes	No	--	40% cellulose	ND	None
84	White/Grey (ceiling tile)	Yes	No	--	95% mineral wool	ND	None
85	White/Grey (ceiling tile)	Yes	No	--	95% mineral wool	ND	None
86	White/Grey (ceiling tile)	Yes	No	--	20% cellulose 60% mineral wool	ND	None
87	White/Grey (ceiling tile)	Yes	No	--	20% cellulose 60% mineral wool	ND	None
88	White/Grey (ceiling tile)	Yes	No	--	40% cellulose 30% mineral wool	ND	None
89	White/Grey (ceiling tile)	Yes	No	--	40% cellulose 30% mineral wool	ND	None
90	Grey (mudded elbow)	Yes	No	--	---	80%	Chrysotile
91	--	--	--	--	--	NA/PS	--
92	--	--	--	--	--	NA/PS	--

TRC LABORATORY ASBESTOS ANALYTICAL ACCREDITATIONS

NVLAP Lab Code 101424-0 AIHA-LAP,LLC #100122 CT #PH-0426 ME LA-0075, LB-0071 MA #AA000052 NY #10980 WV#LT000411
 RI #AAL-007 TX #300354 VT #AL014538 LA#05011 VA #3333 000283 AZ #A20944 HI #L-09-004 NJ #CT004 CA #2907
 CO# AL-15020 PHIL# 461 PA#68-03387

POLARIZED LIGHT MICROSCOPY by EPA 600/R-93/116

Sample No.	Color	Homogenous	Multi-Layered	Layer No.	Other Matrix Materials	Asbestos %	Asbestos Type
93	White (air cell insulation)	Yes	No	--	10% cellulose	60%	Chrysotile
94	--	--	--	--	--	NA/PS	--
95	--	--	--	--	--	NA/PS	--
96	Grey (insulation)	Yes	No	--	60% cellulose	30%	Chrysotile
97	--	--	--	--	--	NA/PS	--
98	--	--	--	--	--	NA/PS	--
99	Grey (elbow)	Yes	No	--	---	60%	Chrysotile
100	--	--	--	--	--	NA/PS	--
101	--	--	--	--	--	NA/PS	--

♣Samples analyzed by EPA/600/R-93/116 with gravimetric reduction

Reporting limit- asbestos present at 1%

ND - asbestos was not detected

Trace - asbestos was observed at level of less than 1%

NA/PS - Not Analyzed / Positive Stop

SNA- Sample Not Analyzed- See Chain of Custody for details

Note: Polarized-light microscopy is not consistently reliable in detecting asbestos in floor coverings and similar non friable organically bound materials. In those cases, EPA recommends, and certain states (e.g. NY) require, that negative results be confirmed by quantitative transmission electron microscopy.

The Laboratory at TRC follows the EPA's Interim Method for the Determination of Asbestos in Bulk Insulation 1982 (EPA 600/M4-82-020) Bulk Analysis Code 18/A01 and the EPA recommended Method for the Determination of Asbestos in Bulk Building Materials July 1993, R.L. Perkins and B.W. Harvey, (EPA/600/R-93/116) Bulk Analysis Code 18/A03, which utilize polarized light microscopy (PLM). Our analysts have completed an accredited course in asbestos identification. TRC's Laboratory is accredited under the National Voluntary Laboratory Accreditation Program (NVLAP), for Bulk Asbestos Fiber Analysis, NVLAP Code 18/A01, effective through June 30, 2017. TRC is accredited by the AIHA Laboratory Accreditation Programs (AIHA-LAP), LLC in the Industrial Hygiene Program (IHLAP) for PLM effective through October 1, 2018. Asbestos content is determined by visual estimate unless otherwise indicated. Quality Control is performed in-house on at least 10% of samples and QC data related to the samples is available upon written request from client.

This report shall not be reproduced, except in full, without the written approval of TRC. This report must not be used by the client to claim product endorsement by NVLAP or any agency of the U.S. Government. This report relates only to the items tested.

Analyzed by: K. Williamson Reviewed by: Cathryn Lohire Date Issued: 01/20/2017
 Kathleen Williamson, Laboratory Manager Cathryn Lohire, Approved Signatory

TRC LABORATORY ASBESTOS ANALYTICAL ACCREDITATIONS

NVLAP Lab Code 101424-0 AIHA-LAP,LLC #100122 CT #PH-0426 ME LA-0075, LB-0071 MA #AA000052 NY #10980 WV# LT000411
 RI #AAL-007 TX #300354 VT #AL014538 LA#05011 VA #3333 000283 AZ #A20944 HI #L-09-004 NJ #CT004 CA #2907
 CO# AL-15020 PHIL# 461 PA#68-03387



ASBESTOS BULK SAMPLING CHAIN OF CUSTODY

21 GRIFFIN ROAD NORTH
WINDSOR, CONNECTICUT 06095
TELEPHONE (860) 298-9692
FAX (860) 298-6380

LAB ID #. 49818

Town of New Milford

PROJECT NUMBER 270902.0002		PROJECT NAME JPS School New Milford		PARAMETERS				TURNAROUND TIME							
								PLM:	TEM:	8hr	24hr	48hr	3day	5day	
								PLM: <input type="checkbox"/> 8hr <input checked="" type="checkbox"/> 24hr <input type="checkbox"/> 48hr TEM: <input checked="" type="checkbox"/> 24hr <input type="checkbox"/> 48hr <input type="checkbox"/> 3day <input type="checkbox"/> 5day							
SIGNATURE <i>David Webster</i>		INSPECTOR David Webster, Bryce Aston		SAMPLE LOCATION		PLM EPA 600/R93/116 (POSITIVE STOP)		ANALYZE BY LAYER		POINT COUNT (IF >1% & <10%)		TEM NY NOB 1984 (IF PLM SERIES NEG)		MATERIAL	
						TYPE	DATE	TIME	COMP	GRAB	PLM EPA 600/R93/116 (POSITIVE STOP)	(W/ gravimetric reduction) (POSITIVE STOP)			
1	1/18/17	1000		X	A side hallway entry by cafeteria	X							FT 1- White 12x12 floor tile w/ yellow mastic		
2	1/18/17	1001		X	A side hallway entry by cafeteria		X						FT 1- White 12x12 floor tile w/ yellow mastic		
3	1/18/17	1003		X	A side entry hallway by cafeteria	X							FT 2- Green 9x9 floor tile w/ black mastic		
4	1/18/17	1004		X	A side entry hallway by cafeteria		X						FT 2- Green 9x9 floor tile w/ black mastic		
5	1/18/17	1006		X	Hallway corridor by cafeteria	X							FT 3- Light salmon colored 12x 12 floor tile w/ yellow mastic		
6	1/18/17	1008		X	Hallway corridor by cafeteria		X						FT 3- Light salmon colored 12x 12 floor tile w/ yellow mastic		
7	1/18/17	1010		X	Cafeteria	X							FT 4- Dark blue 12x12 floor tile w/ black mastic <i>yellow</i>		
8	1/18/17	1014		X	Cafeteria		X						FT 4- Dark blue 12x12 floor tile w/ black mastic		
9	1/18/17	1028		X	Cafeteria	X							FT 5- Turquoise 12x12 floor tile w/ black mastic		
10	1/18/17	1030		X	Cafeteria		X						FT 5- Turquoise 12x12 floor tile w/ black mastic		

Relinquished by (Signature) <i>David Webster</i>	Date:	1/19/17	Received by (Signature)	<i>[Signature]</i>	Date:		Received by (Signature)	
	(Printed)	Time:	1410	(Printed)	1500	Time:	(Printed)	(Printed)
David Webster	Remarks: Send results to Anthony		Condition of Samples: Acceptable: Yes <input checked="" type="checkbox"/> No <input type="checkbox"/>		Comments:			



21 GRIFFIN ROAD NORTH
 WINDSOR, CONNECTICUT 06095
 TELEPHONE (860) 298-9692
 FAX (860) 298-6380

ASBESTOS BULK SAMPLING CHAIN OF CUSTODY

Edition: October 2009
 Supersede Previous Edition

LAB ID #. 49818

PROJECT NUMBER		PROJECT NAME		PARAMETERS				TURNAROUND TIME										
								PLM:	TEM:	8hr	24hr	48hr	3day	5day				
270902.0002		JPS School New Milford		PLM EPA 600/R93/116 (POSITIVE STOP)	PLM EPA 600/R93/116 (w/ gravimetric reduction) (POSITIVE STOP)	ANALYZE BY LAYER	POINT COUNT (IF >1% & <10%)	TEM NY NOB 198.4 (IF PLM SERIES NEG)										
SIGNATURE		INSPECTOR		MATERIAL														
FIELD SAMPLE NUMBER	DATE	TIME	TYPE	COMP	GRAB	SAMPLE LOCATION												
							FT 6- Cream / tan colored 12 x12 floor tile w/ yellow mastic	FT 6- Cream / tan colored 12 x12 floor tile w/ yellow mastic	FT 7- Light green grainy 12x12 floor tile w/ yellow mastic	FT 7- Light green grainy 12x12 floor tile w/ yellow mastic	FT 8- Beige 9x9 floor tile	FT 8- Beige 9x9 floor tile	FT 9- Dark grey 9x9 floor tile	FT 9- Dark grey 9x9 floor tile	FT 10- Red 9x9 floor tile w/ black mastic	FT 10- Red 9x9 floor tile w/ black mastic		
11	1/18/17	1033	X		X	Cafeteria	X											
12	1/18/17	1034	X		X	Cafeteria		X										
13	1/18/17	1042	X		X	Workshop												
14	1/18/17	1043	X		X	Workshop												
15	1/18/17	1230	X		X	Rm 29	X											
16	1/18/17	1230	X		X	Rm 29	X											
17	1/18/17	1246	X		X	Assistant principals office	X											
18	1/18/17	1247	X		X	Assistant principals office	X											
19	1/18/17	1303	X		X	Rm 3	X											
20	1/18/17	1304	X		X	Rm 3	X											

Relinquished by: (Signature) <i>David Webster</i>	Date: 1/19/17	Received by: (Signature) <i>[Signature]</i>	Date: 1/19/17
(Printed) David Webster	Time: 1410	(Printed) [Signature]	Time: 1500
Remarks: Send results to Anthony		Condition of Samples: Acceptable: Yes <input checked="" type="checkbox"/> No <input type="checkbox"/>	
		Comments:	



Edition: October 2009
Supersede Previous Edition

ASBESTOS BULK SAMPLING CHAIN OF CUSTODY

21 GRIFFIN ROAD NORTH
WINDSOR, CONNECTICUT 06095
TELEPHONE (860) 298-9692
FAX (860) 298-6380

LAB ID #. *49818*

PROJECT NUMBER 270902.0002		PROJECT NAME JPS School New Milford		PARAMETERS				TURNAROUND TIME					
								PLM:	8hr	X	24hr	48hr	3day
SIGNATURE <i>David Webster</i>		INSPECTOR David Webster, Bryce Aston		SAMPLE LOCATION				TEM:	X	24hr	48hr	3day	5day
								PLM NY NOB 198.4 (IF PLM SERIES NEG)	POINT COUNT (IF >1% & >10%)	ANALYZE BY LAYER	PLM EPA 600/R93/116 (POSITIVE STOP)	PLM EPA 600/R93/116 (W/ gravimetric reduction) (POSITIVE STOP)	
FIELD SAMPLE NUMBER	DATE	TIME	TYPE	COMP	GRAB	MATERIAL							
21	1/18/17	1053	X		X	Rm 31	X	FT 11- Light blue 12x12 floor tile w/ secs w/ yellow mastic					
22	1/18/17	1054	X		X	Rm 31		FT 11- Light blue 12x12 floor tile w/ secs w/ yellow mastic					
23	1/18/17	1018	X		X	Serving Area	X	CB 1- Tan cove base w/ tan / brown glue					
24	1/18/17	1020	X		X	Serving Area	X	CB 1- Tan cove base w/ tan / brown glue					
25	1/18/17	1023	X		X	Dish washing	X	CB 2- Brown cove base w/ tan glue					
26	1/18/17	1025	X		X	Dish washing	X	CB 2- Brown cove base w/ tan glue					
27	1/18/17	1050	X		X	Rm 31	X	CB 3- Blue cove base w/ tan glue					
28	1/18/17	1051	X		X	Rm 31		CB 3- Blue cove base w/ tan glue					
29	1/18/17	1101	X		X	Rm 141 A	X	CB 4- Dark blue cove base w/ tan glue					
30	1/18/17	1102	X		X	R 141 A	X	CB 4- Dark blue cove base w/ tan glue					

Relinquished by: (Signature) <i>David Webster</i>	Date: 1/19/17	Received by: (Signature) <i>[Signature]</i>	Date: 1/19/17
(Printed) David Webster	Time: 1410	(Printed) <i>[Signature]</i>	Time: 1500
Remarks: Send results to Anthony		Condition of Samples: Acceptable: Yes <input checked="" type="checkbox"/> No <input type="checkbox"/>	
		Comments:	



21 GRIFFIN ROAD NORTH
 WINDSOR, CONNECTICUT 06095
 TELEPHONE (860) 298-9692
 FAX (860) 298-6380

ASBESTOS BULK SAMPLING CHAIN OF CUSTODY

Edition: October 2009
 Supersede Previous Edition

LAB ID #. **49818**

PROJECT NUMBER		PROJECT NAME		PARAMETERS					TURNAROUND TIME				
									PLM:	8hr	X	24hr	48hr
270902.0002		JPS School New Milford		PLM EPA 600/R93/116 (POSITIVE STOP)	PLM EPA 600/R93/116 (w/ gravimetric reduction) (POSITIVE STOP)	ANALYZE BY LAYER	POINT COUNT (IF >1% & <10%)	TEM NY NOB 198.4 (IF PLM SERIES NEG)	MATERIAL				
SIGNATURE		INSPECTOR		SAMPLE LOCATION									
<i>David Webster</i>		David Webster, Bryce Aston		TYPE	DATE	TIME	COMP	GRAB					
				FIELD SAMPLE NUMBER	DATE	TIME	COMP	GRAB					
31	1/18/17	1109		X	Library			X	CB 5- Grey cover base w/ white glue				
32	1/18/17	1110		X	Library			X	CB 5- Grey cover base w/ white glue				
33	1/18/17	1214		X	Hallway by A/V storage				CB 6- Light grey cover base w/ tan glue				
34	1/18/17	1215		X	Hallway by A/V storage			X	CB 6- Light grey cover base w/ tan glue				
35	1/18/17	1249		X	Assistant principals office				CB 7- Black cover base w/ tan glue				
36	1/18/17	1250		X	Assistant principals office			X	CB 7- Black cover base w/ tan glue				
37	1/18/17	1059		X	Rm 141 A			X	CG 1- Yellow carpet glue under carpet				
38	1/18/17	1100		X	Rm 141 A			X	CG 1- Yellow carpet glue under carper				
39	1/18/17	1104		X	Rm 22AA			X	CG 2- Green carpet glue under carpet				
40	1/18/17	1104		X	Rm 22AA			X	CG 2- Green carpet glue under carpet				
41	1/18/17	1106		X	Library			X	CG 3- Light green carpet glue under carpet				

Relinquished by: (Signature) <i>David Webster</i>	Date: 1/19/17	Received by: (Signature) <i>[Signature]</i>	Date: 1/19/17
(Printed) David Webster	Time: 1410	(Printed) <i>[Signature]</i>	Time: 1500
Remarks: Send results to Anthony		Condition of Samples: Acceptable: Yes <input checked="" type="checkbox"/> No <input type="checkbox"/>	
		Comments: Page 4 of 10	



21 GRIFFIN ROAD NORTH
WINDSOR, CONNECTICUT 06095
TELEPHONE (860) 298-9692
FAX (860) 298-6380

ASBESTOS BULK SAMPLING CHAIN OF CUSTODY

Edition: October 2009
Supersede Previous Edition

LAB ID #. **49818**

PROJECT NUMBER	PROJECT NAME	PARAMETERS					TURNAROUND TIME											
		PLM EPA 600/R93/116 (POSITIVE STOP)	PLM EPA 600/R93/116 (w/ gravimetric reduction) (POSITIVE STOP)	ANALYZE BY LAYER	POINT COUNT (IF >1% & <10%)	TEM NY NOB 198.4 (IF PLM SERIES NEG)	PLM:	TEM:	8hr	24hr	48hr	3day						
270902.0002	JPS School New Milford								X									
INSPECTOR		David Webster, Bryce Aston																
FIELD SAMPLE NUMBER	DATE	TIME	TYPE		SAMPLE LOCATION	MATERIAL												
			COMP	GRAB		CG 3- Light green carpet glue under carpet	CG 4- Green carpet glue under carpet	CG 4- Green carpet glue under carpet	SHR 1- White sheet rock w/ JC1	SHR 1- White sheet rock w/ JC1	SHR 1- White sheet rock w/ JC1	SHR 1- White sheet rock w/ JC1	SHR 1- White sheet rock w/ JC1	SHR 1- White sheet rock w/ JC1	SHR 1- White sheet rock w/ JC1	SHR 1- White sheet rock w/ JC1	JC 1- Joint compound assoc w/ SHR 1	
42	1/18/17	1108	X		Library		X											
43	1/18/17	1128	X		Rm 32		X											
44	1/18/17	1129	X		Rm 32		X											
45	1/18/17	1036	X		Serving area		X											
46	1/18/17	1037	X		Serving area		X											
47	1/18/17	1058	X		Rm 31		X											
48	1/18/17	1059	X		Rm 31		X											
49	1/18/17	1136	X		Hallway by Rm 32		X											
50	1/18/17	1242	X		Rm 9 AA		X											
51	1/18/17	1244	X		Rm 9 AA		X											
52	1/18/17	1035	X		Serving area		X											

Relinquished by: (Signature) <i>David Webster</i>	Date: 1/19/17	Received by: (Signature) <i>[Signature]</i>	Date: 1/19/17
(Printed) David Webster	Time: 1611	(Printed) [Signature]	Time: 1500
Remarks: Send results to Anthony		Condition of Samples: Acceptable: Yes <input checked="" type="checkbox"/> No <input type="checkbox"/>	
		Comments: Page 5 of 10	



21 GRIFFIN ROAD NORTH
WINDSOR, CONNECTICUT 06095
TELEPHONE (860) 298-9692
FAX (860) 298-6380

ASBESTOS BULK SAMPLING CHAIN OF CUSTODY

Edition: October 2009
Supersede Previous Edition

LAB ID #. 49818

PROJECT NUMBER 270902.0002		PROJECT NAME JPS School New Milford		PARAMETERS		TURNAROUND TIME													
						PLM:	TEM:	8hr	24hr	48hr	3day	5day							
SIGNATURE <i>David Webster</i>		INSPECTOR David Webster, Bryce Aston		PLM EPA 600/R93/116 (POSITIVE STOP)	PLM EPA 600/R93/116 (w/ gravimetric reduction) (POSITIVE STOP)	ANALYZE BY LAYER	POINT COUNT (IF >1% & <10%)	TEM NY NOB 198.4 (IF PLM SERIES NEG)	MATERIAL										
FIELD SAMPLE NUMBER	DATE	TIME	TYPE						COMP	GRAB	SAMPLE LOCATION								
53	1/18/17	1036	X		X	Serving area						JC 1 - Joint compound assoc w/ SHR 1							
54	1/18/17	1058	X		X	Rm 31						JC 1 - Joint compound assoc w/ SHR 1							
55	1/18/17	1059	X		X	Rm 31						JC 1 - Joint compound assoc w/ SHR 1							
56	1/18/17	1238	X		X	Assistant principals office						JC 1 - Joint compound assoc w/ SHR 1							
57	1/18/17	1240	X		X	Assistant principals office						JC 1 - Joint compound assoc w/ SHR 1							
58	1/18/17	1241	X		X	Assistant principals office						JC 1 - Joint compound assoc w/ SHR 1							
59	1/18/17	1131	X		X	Rm 32						P 1 - White plaster							
60	1/18/17	1131	X		X	Rm 32						P 1 - White plaster							
61	1/18/17	1137	X		X	Rm 33						P 1 - White plaster							
62	1/18/17	1138	X		X	Rm 33						P 1 - White plaster							
63	1/18/17	1232	X		X	Rm 27						P 1 - White plaster							

Relinquished by: (Signature) <i>David Webster</i> (Printed)	Date: 1/19/17	Received by: (Signature) <i>[Signature]</i> (Printed)	Date: 1/19/17	Relinquished by: (Signature)	Received by: (Signature)
David Webster	Time: 1411	Time: 1500	Time: 1500	(Printed)	(Printed)
Remarks: Send results to Anthony				Condition of Samples: <input checked="" type="checkbox"/> Yes <input type="checkbox"/> No	
				Comments: Page 6 of 10	



ASBESTOS BULK SAMPLING CHAIN OF CUSTODY

21 GRIFFIN ROAD NORTH
WINDSOR, CONNECTICUT 06095
TELEPHONE (860) 298-9692
FAX (860) 298-6380

LAB ID #. **49818**

PROJECT NUMBER		PROJECT NAME		PARAMETERS				TURNAROUND TIME					
270902.0002		JPS School New Milford		PLM EPA 600/R93/116 (POSITIVE STOP)	PLM EPA 600/R93/116 (w/ gravimetric reduction) (POSITIVE STOP)	ANALYZE BY LAYER	POINT COUNT (IF >1% & <10%)	TEM NY NOB 198.4 (IF PLM SERIES NEG)	PLM:	8hr	24hr	48hr	3day
SIGNATURE <i>David Webster</i>		INSPECTOR David Webster, Bryce Aston						TEM:					
								8hr					
								24hr					
								48hr					
								3day					
								5day					
FIELD SAMPLE NUMBER	DATE	TIME	TYPE	COMP	GRAB	SAMPLE LOCATION							
64	1/18/17	1232	X		X	Rm 27	X					P 1 - White plaster	
65	1/18/17	1235	X		X	Rm 28	X					P 1 - White plaster	
66	1/18/17	1122	X		X	Rm 32	X					PB 1 - Tan press board on wall	
67	1/18/17	1123	X		X	Rm 32	X					PB 1 - Tan press board on wall	
68	1/18/17	1113	X		X	Library	X					WG 1 - Tan glue on wall	
69	1/18/17	1113	X		X	Library	X					WG 1 - Tan glue on wall	
70	1/18/17	1117	X		X	Library	X	X				WG 2 - Blue glue on wall	
71	1/18/17	1118	X		X	Library	X	X				WG 2 - Blue glue on wall	
72	1/18/17	1134	X		X	Hallway by Rm 32	X					GD 1 - Brown glue dob above CT 3	
73	1/18/17	1135	X		X	Hallway by Rm 32	X	X				GD 1 - Brown glue dob above CT 3	
74	1/18/17	1245	X		X	Rm 22	X					GD 2 - Black glue dob	

Relinquished by: (Signature) <i>David Webster</i>	Date: 1/19/17	Received by: (Signature) <i>David Webster</i>	Date: 1/19/17	Relinquished by: (Signature)	Date:	Received by: (Signature)
(Printed) David Webster	Time: 1411	(Printed) 1500	(Printed) 1500	(Printed)	Time:	(Printed)
Remarks: Send results to Anthony				Condition of Samples: Acceptable: Yes <input checked="" type="checkbox"/> No <input type="checkbox"/>		
				Comments:		



ASBESTOS BULK SAMPLING CHAIN OF CUSTODY

21 GRIFFIN ROAD NORTH
WINDSOR, CONNECTICUT 06095
TELEPHONE (860) 298-9692
FAX (860) 298-6380

LAB ID #. *49818*

PROJECT NUMBER		PROJECT NAME		PARAMETERS		TURNAROUND TIME					
						PLM:	8hr	X	24hr	48hr	3day
270902.0002		JPS School New Milford		PLM EPA 600/R93/116 (POSITIVE STOP)	X	24hr	48hr	3day	5day		
SIGNATURE		INSPECTOR		ANALYZE BY LAYER		MATERIAL					
<i>David Webster</i>		David Webster, Bryce Aston		PLM EPA 600/R93/116 (POSITIVE STOP)							
				POINT COUNT (IF >1% & <10%)							
FIELD SAMPLE NUMBER		SAMPLE LOCATION		PLM EPA 600/R93/116 (w/ gravimetric reduction) (POSITIVE STOP)							
DATE		TYPE		GRAV							
TIME		COMP		GRAB							
75	1/18/17	1245	X	Rm 22	X	GD 2- Black glue dob					
76	1/18/17	1039	X	Washing area	X	CT 1- White 2x4 patterned pinhole ceiling tile					
77	1/18/17	1038	X	Washing area	X	CT 1- White 2x4 patterned pinhole ceiling tile					
78	1/18/17	1040	X	Kitchen bathroom	X	CT 2- White 2x4 pinhole / wormhole 2x4 ceiling tile					
79	1/18/17	1041	X	Kitchen bathroom	X	CT 2- White 2x4 pinhole / wormhole 2x4 ceiling tile					
80	1/18/17	1044	X	Hallway o/s of gym	X	CT 3- White 24 pinhole ceiling tile					
81	1/18/17	1045	X	Hallway o/s of gym	X	CT 3- White 24 pinhole ceiling tile					
82	1/18/17	1105	X	Hallway by library	X	CT 4- White spaghetti 2x8 ceiling tile panels attached to concrete decking					
83	1/18/17	1106	X	Hallway by library	X	CT 4- White spaghetti 2x8 ceiling tile panels attached to concrete decking					
84	1/18/17	1110	X	Library	X	CT 5- White chalky 2x2 ceiling tile w/ wormhole pattern					

Relinquished by: (Signature) <i>David Webster</i>	Date: 1/19/17	Received by: (Signature) <i>[Signature]</i>	Date: 1/19/17
(Printed) David Webster	Time: <i>11:11</i>	(Printed) <i>[Signature]</i>	Time: <i>15:02</i>
Remarks: Send results to Anthony		Condition of Samples: Acceptable: Yes <input checked="" type="checkbox"/> No <input type="checkbox"/>	
		Comments:	



21 GRIFFIN ROAD NORTH
WINDSOR, CONNECTICUT 06095
TELEPHONE (860) 298-9692
FAX (860) 298-6380

ASBESTOS BULK SAMPLING CHAIN OF CUSTODY

Edition: October 2009
Supersede Previous Edition

LAB ID #. *49818*

PROJECT NUMBER		PROJECT NAME		PARAMETERS					TURNAROUND TIME						
270902.0002		JPS School New Milford		PLM EPA 600/R93/116 (POSITIVE STOP)	PLM EPA 600/R93/116 (w/ gravimetric reduction) (POSITIVE STOP)	ANALYZE BY LAYER	POINT COUNT (IF >1% & <10%)	TEM NY NOB 198.4 (IF PLM SERIES NEG)	PLM:	8hr	X	24hr	X	48hr	3day
SIGNATURE <i>David Webster</i>		INSPECTOR David Webster, Bryce Aston		MATERIAL					TEM:	X	24hr	X	48hr	3day	5day
FIELD SAMPLE NUMBER	DATE	TIME	TYPE	SAMPLE LOCATION		PLM EPA 600/R93/116 (POSITIVE STOP)	PLM EPA 600/R93/116 (w/ gravimetric reduction) (POSITIVE STOP)	ANALYZE BY LAYER	POINT COUNT (IF >1% & <10%)	TEM NY NOB 198.4 (IF PLM SERIES NEG)					
				COMP	GRAB										
85	1/18/17	1111	X	Library	Library	X									
86	1/18/17	1119	X	Library	Library	X									
87	1/18/17	1120	X	Library	Library	X									
88	1/18/17	1220	X	Exit way by Rm 29	Exit way by Rm 29	X									
89	1/18/17	1220	X	Exit way by Rm 29	Exit way by Rm 29	X									
90	1/19/17	1130	X	Rm 9 AA / office	Rm 9 AA / office	X									
91	1/19/17	1132	X	Rm 9AA / office	Rm 9AA / office	X									
92	1/19/17	1135	X	Rm 9AA / office	Rm 9AA / office	X									
93	1/19/17	1140	X	Rm 9AA /office	Rm 9AA /office	X									
94	1/19/17	1142	X	Rm 9AA /office	Rm 9AA /office	X									
95	1/19/17	1144	X	Rm 9AA /office	Rm 9AA /office	X									

Relinquished by: (Signature) <i>David Webster</i>	Date: 1/19/17	Received by: (Signature) <i>Williamson</i>	Date: 1/19/17	Relinquished by: (Signature)	Date:	Received by: (Signature)
(Printed) David Webster	Time: 1411	(Printed) <i>Williamson</i>	Time: 1500	(Printed)	Time:	(Printed)
Remarks: Send results to Anthony				Condition of Samples: Acceptable: Yes <input checked="" type="checkbox"/> No <input type="checkbox"/>		
				Page 9 of 10		



21 GRIFFIN ROAD NORTH
 WINDSOR, CONNECTICUT 06095
 TELEPHONE (860) 298-9692
 FAX (860) 298-6380

ASBESTOS BULK SAMPLING CHAIN OF CUSTODY

Edition: October 2009
 Supersede Previous Edition

LAB ID #. *49818*

PROJECT NUMBER 270902.0002		PROJECT NAME JPS School New Milford		PARAMETERS					TURNAROUND TIME				
									PLM:	8hr	X	24hr	48hr
SIGNATURE <i>David Webster</i>		INSPECTOR David Webster, Bryce Aston		MATERIAL									
FIELD SAMPLE NUMBER	DATE	TIME	TYPE										
96	1/19/17	1205	X		X	Hallway adjacent to Rm 31	RFDI 1- Roof drain insulation	PLM EPA 600/R93/116 (POSITIVE STOP)	PLM EPA 600/R93/116 (w/ gravimetric reduction) (POSITIVE STOP)	ANALYZE BY LAYER	POINT COUNT (IF >1% & <10%)	TEM NY NOB 198.4 (IF PLM SERIES NEG)	
97	1/19/17	1206	X		X	Hallway adjacent to Rm 31	RFDI 1- Roof drain insulation						
98	1/19/17	1207	X		X	Hallway adjacent to Rm 31	RFDI 1- Roof drain insulation						
99	1/19/17	1200	X		X	Hallway adjacent to Rm 31	RFDE 1- Grey mudded elbow off roof drain						
100	1/19/17	1200	X		X	Hallway adjacent to Rm 31	RFDE 1- Grey mudded elbow off roof drain						
101	1/19/17	1202	X		X	Hallway adjacent to Rm 31	RFDE 1- Grey mudded elbow off roof drain						

Relinquished by: (Signature) <i>David Webster</i>	Date: 1/19/17	Received by: (Signature) <i>1/19/17</i>	Date:	Relinquished by: (Signature)	Date:	Received by: (Signature)
(Printed) David Webster	Time: 1411	(Printed) <i>1500</i>	Time:	(Printed)	Time:	(Printed)
Remarks: Send results to Anthony		Condition of Samples: Acceptable: Yes <input checked="" type="checkbox"/> No <input type="checkbox"/>		Comments:		Page 10 of 10

PLM Gravimetric Analysis

Date	Analyst	Lab Log #	Sample ID	Crucible ID	g crucible	g crucible plus sample	g after 480°	decimal	% Asb in residue	% Asb total Sample
1/20/2017	KW	49818	2M	50	20.9389	20.9821	20.975	0.836	0.00	0.00
			2T	51	19.0172	19.0581	19.0531	0.878	0.00	0.00
			6M	53	17.5059	17.5098	17.508	0.538	0.00	0.00
			6T	59	22.2327	22.2497	22.2467	0.824	0.00	0.00
			8M	61	19.4814	19.4853	19.4842	0.718	0.00	0.00
			8T	74	20.9831	20.999	20.9966	0.849	0.00	0.00
			10M	79	20.7759	20.7764	20.7761	0.400	0.00	0.00
			10T	83	20.5597	20.5611	20.5603	0.429	0.00	0.00
			12M	84	17.3556	17.3758	17.3731	0.866	0.00	0.00
			12T	85	21.2007	21.202	21.2014	0.538	0.00	0.00
			14M	86	17.366	17.3752	17.3717	0.620	0.00	0.00
			14T	87	20.4619	20.4793	20.4767	0.851	0.00	0.00
			22M	89	18.7279	18.7477	18.7453	0.879	0.00	0.00
			22T	90	25.6771	25.7011	25.6988	0.904	0.00	0.00
			24G	91	24.5736	24.5945	24.59	0.785	0.00	0.00
			24CB	92	17.767	17.8058	17.8023	0.910	0.00	0.00
			26G	93	25.5956	25.6247	25.6167	0.725	0.00	0.00
			26CB	94	23.1573	23.1765	23.1699	0.656	0.00	0.00
			28G	95	20.182	20.2064	20.201	0.779	0.00	0.00
			28CB	96	29.4962	29.5117	29.5054	0.594	0.00	0.00
			30G	97	19.074	19.1071	19.0991	0.758	0.00	0.00
			30CB	99	17.6137	17.6288	17.6226	0.589	0.00	0.00
			32G	100	18.5532	18.5881	18.5819	0.822	0.00	0.00
			32CB	101	23.4666	23.4928	23.4883	0.828	0.00	0.00
			34G	102	22.4639	22.4878	22.4825	0.778	0.00	0.00
			34CB	105	17.4769	17.5148	17.4993	0.591	0.00	0.00

PLM Gravimetric Analysis

Date	Analyst	Lab Log #	Sample ID	Crucible ID	g crucible	g crucible plus sample	g after 480°	decimal Residue	% Asb in residue	% Asb total Sample
1/20/2017	KW	49818	36G	106	18.1018	18.1224	18.1166	0.718	0.00	0.00
			36CB	107	25.771	25.7988	25.7912	0.727	0.00	0.00
			38	108	22.1265	22.1919	22.1761	0.758	0.00	0.00
			40	109	17.9116	17.9391	17.9246	0.473	0.00	0.00
			42	110	19.7307	19.757	19.7391	0.319	0.00	0.00
			44	111	22.0078	22.033	22.0274	0.778	0.00	0.00
			69	112	20.5394	20.5818	20.5688	0.693	0.00	0.00
			71	113	18.9532	19.044	19.0336	0.885	0.00	0.00
			73	115	23.5538	23.6199	23.607	0.805	0.00	0.00
			75	141	24.2055	24.3445	24.3217	0.836	0.00	0.00



State of Connecticut

Lookup Detail View

Name

Name
BRYCE A ASTON

License Information

lookup

License Type	License Number	Expiration Date	Granted Date	License Name	License Status	Licensure Actions or Pending Charges
Lead Inspector Risk Assessor	1838	10/31/2017	08/28/1998	Bryce A. Aston	ACTIVE	None

Generated on: 2/8/2017 12:59:18 PM



State of Connecticut

Lookup Detail View

Name

Name
BRYCE A ASTON

License Information

lookup

License Type	License Number	Expiration Date	Granted Date	License Name	License Status	Licensure Actions or Pending Charges
Asbestos Consultant-Insp/Mgmt Planner	161	10/31/2017	12/19/1997	BRYCE A. ASTON	ACTIVE	None

Generated on: 2/8/2017 1:00:00 PM

State of Connecticut, Department of Public Health
Approved Environmental Laboratory

THIS IS TO CERTIFY THAT THE LABORATORY DESCRIBED BELOW HAS BEEN APPROVED BY THE STATE DEPARTMENT OF PUBLIC HEALTH PURSUANT TO APPLICABLE PROVISIONS OF THE PUBLIC HEALTH CODE AND GENERAL STATUTES OF CONNECTICUT, FOR MAKING THE EXAMINATIONS, DETERMINATIONS OR TESTS SPECIFIED BELOW WHICH HAVE BEEN AUTHORIZED IN WRITING BY THAT DEPARTMENT.

TRC ENVIRONMENTAL CORPORATION

LOCATED AT 21 Griffin Road North IN Windsor, CT 06095

AND REGISTERED IN THE NAME OF Erik Plimpton

THIS CERTIFICATE IS ISSUED IN THE NAME OF Kathleen Williamson WHO HAS BEEN DESIGNATED BY THE REGISTERED OWNER/AUTHORIZED AGENT TO BE IN CHARGE OF THE LABORATORY WORK COVERED BY THIS CERTIFICATE OF APPROVAL AS FOLLOWS:

BUILDING MATERIALS
ASBESTOS FIBERS - PCM
BULK IDENTIFICATION - PLM

SEE COMPUTER PRINT-OUT FOR SPECIFIC TESTS APPROVED

THIS CERTIFICATE EXPIRES DECEMBER 31, 2017 AND IS REVOCABLE FOR CAUSE BY THE STATE DEPARTMENT OF PUBLIC HEALTH DATED AT HARTFORD, CONNECTICUT, THIS 7th DAY OF December 2015



Registration No.

PH- 0426

SUZANNE BLANCAFLOR, MS
CHIEF, ENVIRONMENTAL HEALTH SECTION

United States Department of Commerce
National Institute of Standards and Technology



Certificate of Accreditation to ISO/IEC 17025:2005

NVLAP LAB CODE: 101424-0

TRC Environmental Corporation
Windsor, CT

is accredited by the National Voluntary Laboratory Accreditation Program for specific services, listed on the Scope of Accreditation, for:

Asbestos Fiber Analysis

This laboratory is accredited in accordance with the recognized International Standard ISO/IEC 17025:2005. This accreditation demonstrates technical competence for a defined scope and the operation of a laboratory quality management system (refer to joint ISO-ILAC-IAF Communique dated January 2009).

2016-07-01 through 2017-06-30
Effective Dates


For the National Voluntary Laboratory Accreditation Program



SCOPE OF ACCREDITATION TO ISO/IEC 17025:2005

TRC Environmental Corporation

21 Griffin Road North

Windsor, CT 06095

Ms. Kathleen Williamson

Phone: 860-298-6392 Fax: 860-298-6214

Email: kwilliamson@trcsolutions.com

<http://www.trcsolutions.com>

ASBESTOS FIBER ANALYSIS

NVLAP LAB CODE 101424-0

Bulk Asbestos Analysis

<u>Code</u>	<u>Description</u>
18/A01	EPA 600/M4-82-020: Interim Method for the Determination of Asbestos in Bulk Insulation Samples
18/A03	EPA 600/R-93/116: Method for the Determination of Asbestos in Bulk Building Materials

A handwritten signature in blue ink, appearing to read "Dana S. Laman".

For the National Voluntary Laboratory Accreditation Program