

LOCATION MAP
SCALE: 1" = 500'

STANDARD CONVENTIONS

North Arrow W/No. Coord. Grid Arrow

Edge Of Road Limit Of Marsh

Concrete Pavement Stone Wall

Dirt Road Ledge Outcrop

B.C.L.C. Inland Wetland Limits

Concrete Curb

Guide Rail

Concrete Median Barrier

Bit. Walk

Conc. Sidewalk

Railroad Tracks

Chain Link Fence

Rustic Fence

Pipe Fence

Board Fence

Water Edge

Stream

Ditch

TOWN LINE

Boring Location

LEGEND:

● Iron Pin (Found)

□ Monument (Found)

△ Sign

⊙ Sewer Manhole

⊙ Electric Manhole

⊙ Telephone Manhole

⊙ "C" Catch Basin

□ "C-L" Catch Basin

☆ Light Pole

○ Metal/Timber Post

○ Utility Pole

⋈ Guy Anchor

⊗ Water Gate

⊙ Gas Valve

⊙ Gas Meter

⊙ Mail Box

X Fence Line

— Guide Rail

S Piping (Sanitary)

D Piping (Storm)

G Gas

E U/G Elec. Line

W Water Line

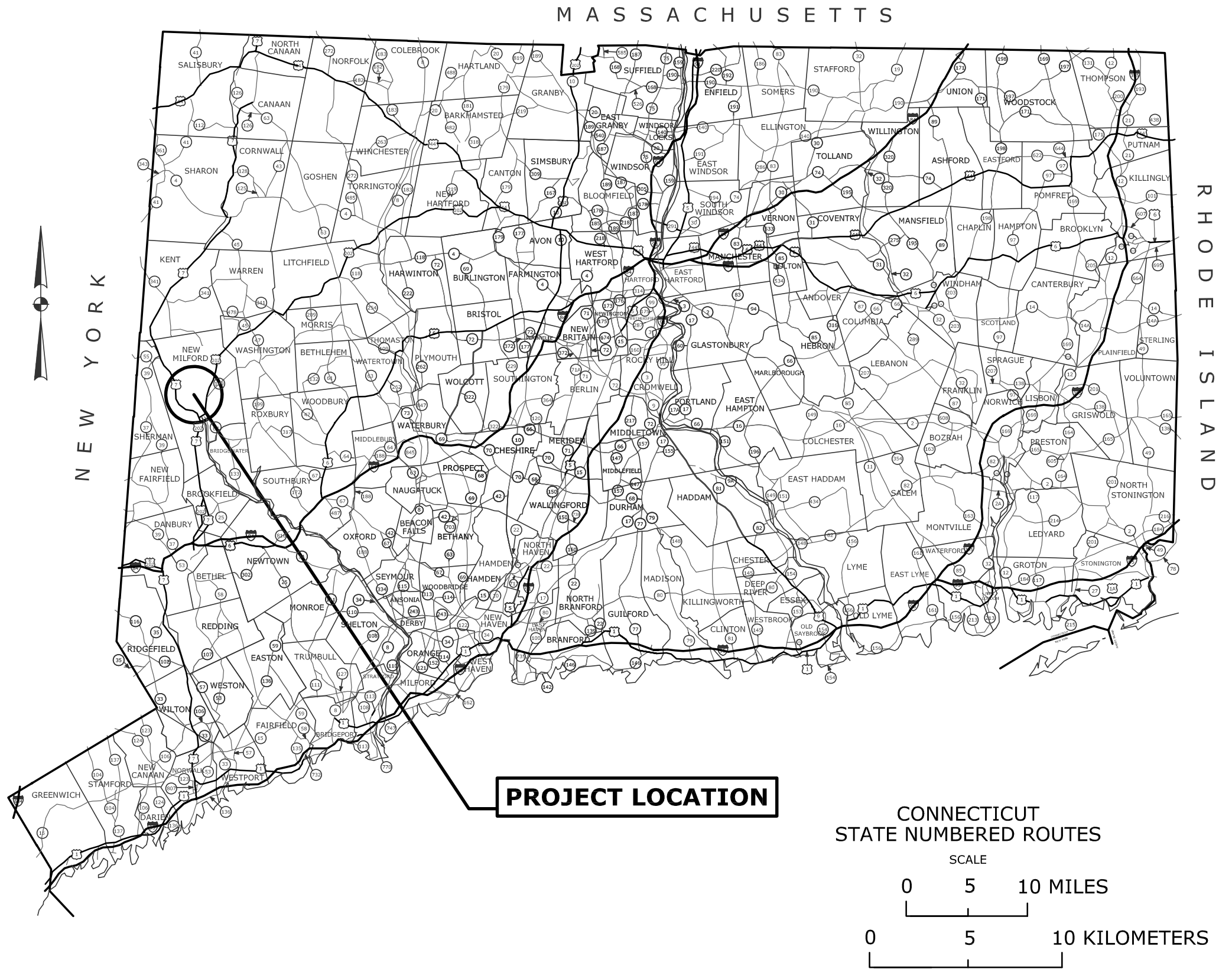
—OHW Overhead Utilities

T U/G Tele. Line

TOWN OF NEW MILFORD CONNECTICUT

PLANS FOR THE NEW PUBLIC WORKS FACILITY

TO BE MAINTAINED BY THE TOWN OF NEW MILFORD
(FOR PERMITTING ONLY)
REVISED 05/03/24



TECHNICAL SPECIFICATIONS: STATE OF CONNECTICUT DEPARTMENT OF TRANSPORTATION STANDARD SPECIFICATIONS FOR ROADS, BRIDGES AND INCIDENTAL CONSTRUCTION (FORM 818) AND ALL LATEST SUPPLEMENTAL SPECIFICATIONS THERETO, AS WELL AS THE TOWN OF NEW MILFORD PUBLIC IMPROVEMENT SPECIFICATIONS.

DESIGN STANDARDS: AASHTO POLICY ON THE GEOMETRIC DESIGN OF HIGHWAYS AND STREETS, DATED 2004 AND THE CONNECTICUT DEPARTMENT OF TRANSPORTATION HIGHWAY DESIGN MANUAL DATED 2003.

SURVEY: ALL COORDINATES ON THE PROJECT ARE BASED ON NAD 83. ALL ELEVATIONS ARE BASED ON NAVD 1988.

CONNECTICUT DEPARTMENT OF TRANSPORTATION OR TOWN OF NEW MILFORD BIDDING AND OTHER INFORMATION AND DOCUMENTS WHICH ARE OBTAINED THROUGH THE INTERNET, WORLD WIDE WEB SITES OR OTHER SOURCES ARE NOT TO BE CONSTRUED TO BE OFFICIAL INFORMATION FOR THE PURPOSES OF BIDDING OR CONDUCTING OTHER BUSINESS WITH THE TOWN OF NEW MILFORD.

IT IS THE RESPONSIBILITY OF EACH BIDDER AND ALL OTHER INTERESTED PARTIES TO OBTAIN ALL BIDDING RELATED INFORMATION AND DOCUMENTS FROM OFFICIAL SOURCES WITHIN THE TOWN OF NEW MILFORD.

PERSONS AND/OR ENTITIES WHICH REPRODUCE AND/OR MAKE SUCH INFORMATION AVAILABLE BY ANY MEANS ARE NOT AUTHORIZED BY THE TOWN OF NEW MILFORD TO DO SO AND MAY BE LIABLE FOR CLAIMS RESULTING FROM THE DISSEMINATION OF UNOFFICIAL, INCOMPLETE AND/OR INACCURATE INFORMATION.

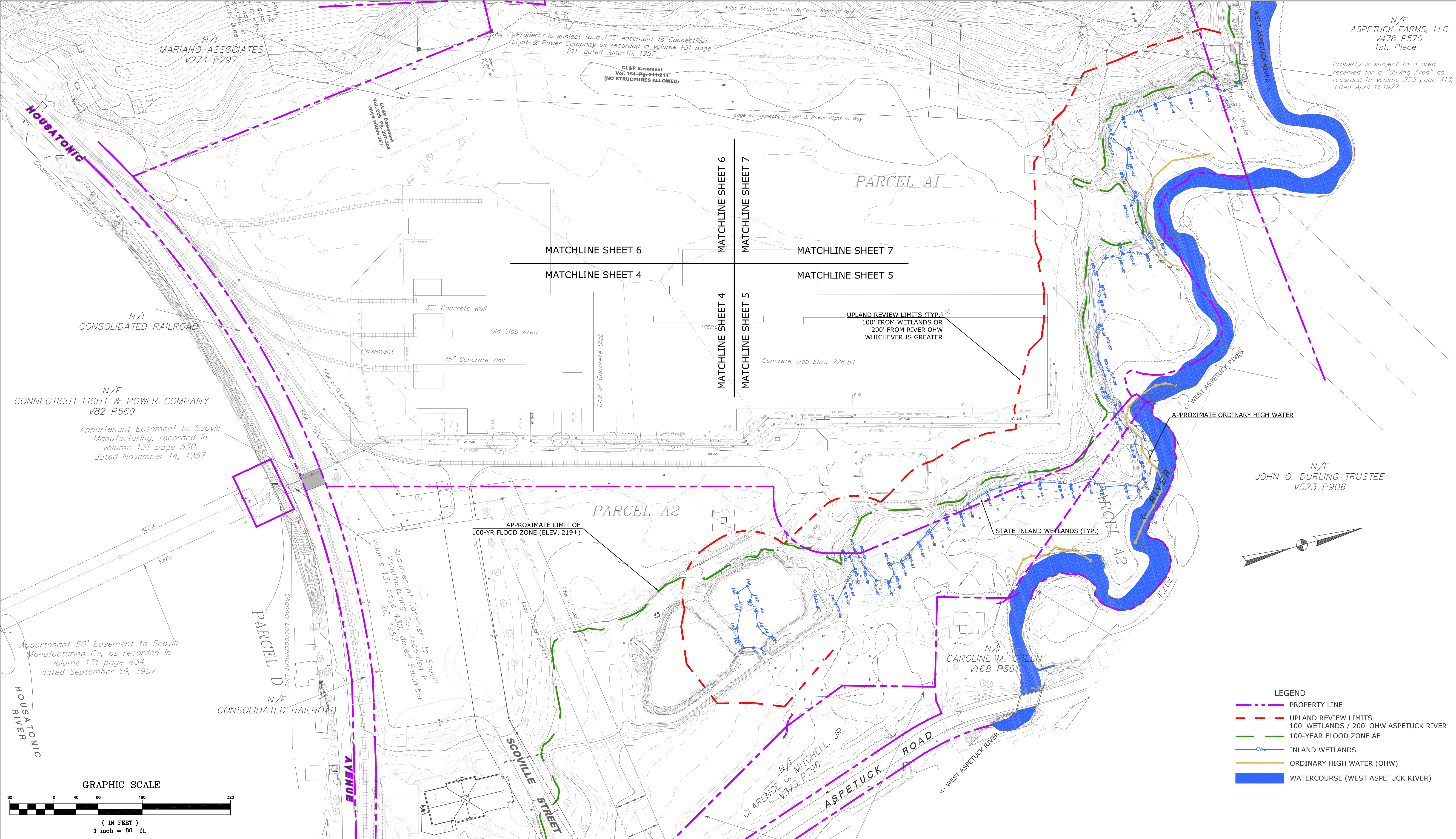
LIST OF DRAWINGS	
SHEET NO.	TITLE
1	TITLE SHEET
	SITE SURVEY (SEPARATE PLAN SHEET)
2	EXISTING CONDITIONS / INDEX PLAN
3	PROPOSED OVERALL DEVELOPMENT PLAN
4 - 7	EROSION CONTROL PLAN
8	SITE DRAINAGE DETAILS
9	EROSION CONTROL DETAILS

DESIGNED BY WMC CONSULTING ENGINEERS

SUBMITTED BY _____ DATE _____

PUBLIC WORKS DIRECTOR - TOWN OF NEW MILFORD

JACK HEALY _____ DATE _____



1	03/12/24	UTILITIES ADDED PER TOWN COMMENTS
2	04/11/24	GRADING AND DRAINAGE ADDED
3	05/03/24	UPDATE UTILITY INFORMATION
NO.	DATE	DESCRIPTION
REVISIONS		

SUPV.	S.R.M.
DESIGN	R.E.B.
DRAWN	R.E.B.
CHECKED	S.R.M.
DATE	03/11/24

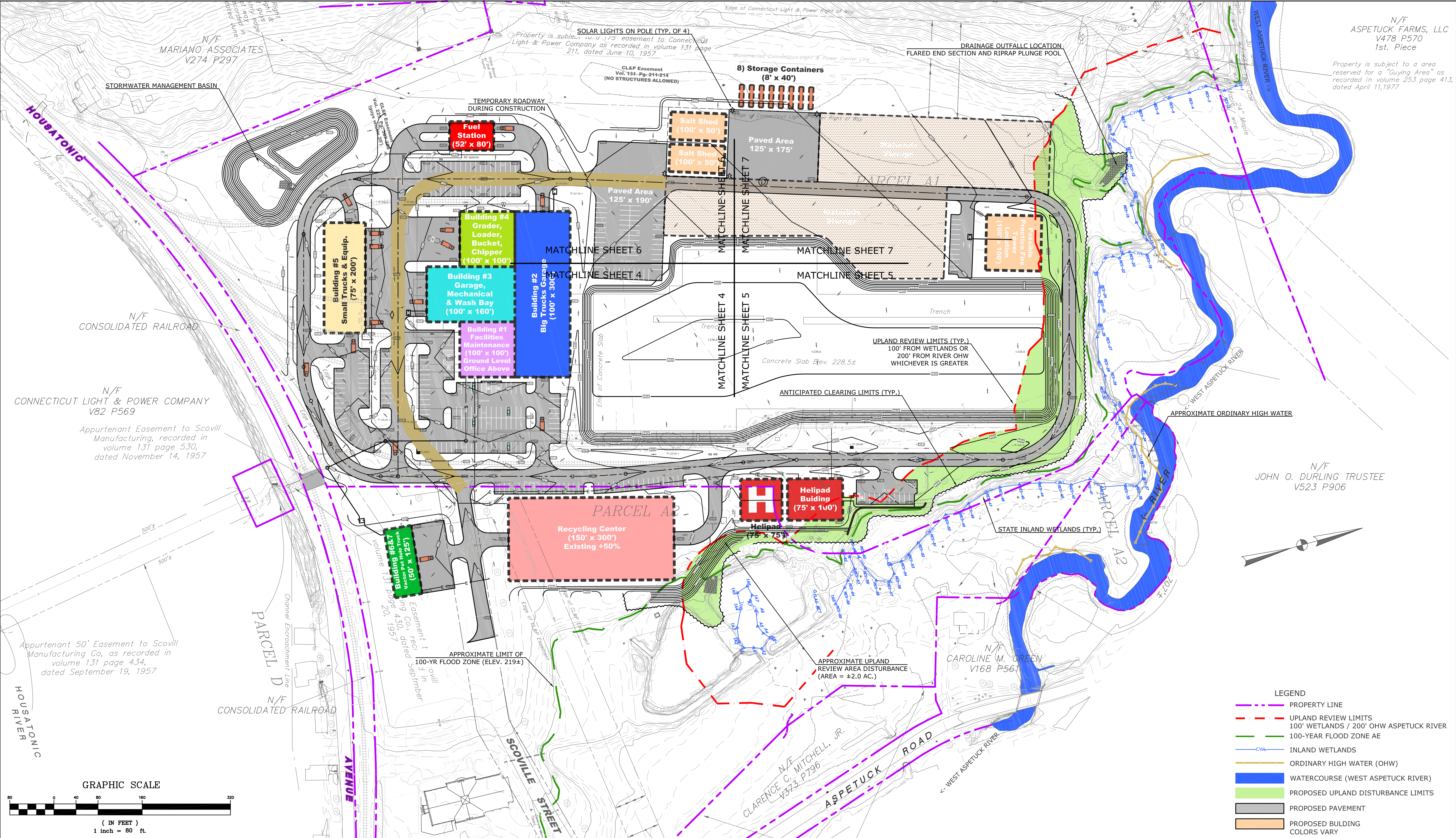
FOR PERMITTING ONLY

SCALE
1" = 80'

WMC
CONSULTING ENGINEERS
• WENGELL, McDONNELL & COSTELLO •
87 HOLMES ROAD
NEWINGTON, CT 06111
(860) 667-9624

PREPARED FOR
TOWN OF NEW MILFORD
10 MAIN ST
NEW MILFORD, CT 06776

EXISTING CONDITIONS / INDEX PLAN NEW PUBLIC WORKS FACILITY NEW MILFORD, CONNECTICUT					SHEET	2
D -	DPW Facility	NM_DPW_PD_	23057.10	-	REV.	OF
SIZE	PROJECT	FILE NAME	NUMBER	REV.	OF	8



1	03/12/24	UTILITIES ADDED PER TOWN COMMENTS
2	04/11/24	GRADING AND DRAINAGE ADDED
3	05/03/24	UPDATE UTILITY INFORMATION
NO.	DATE	DESCRIPTION
REVISIONS		

SUPV.	S.R.M.
DESIGN	R.E.B.
DRAWN	R.E.B.
CHECKED	S.R.M.
DATE	03/11/24

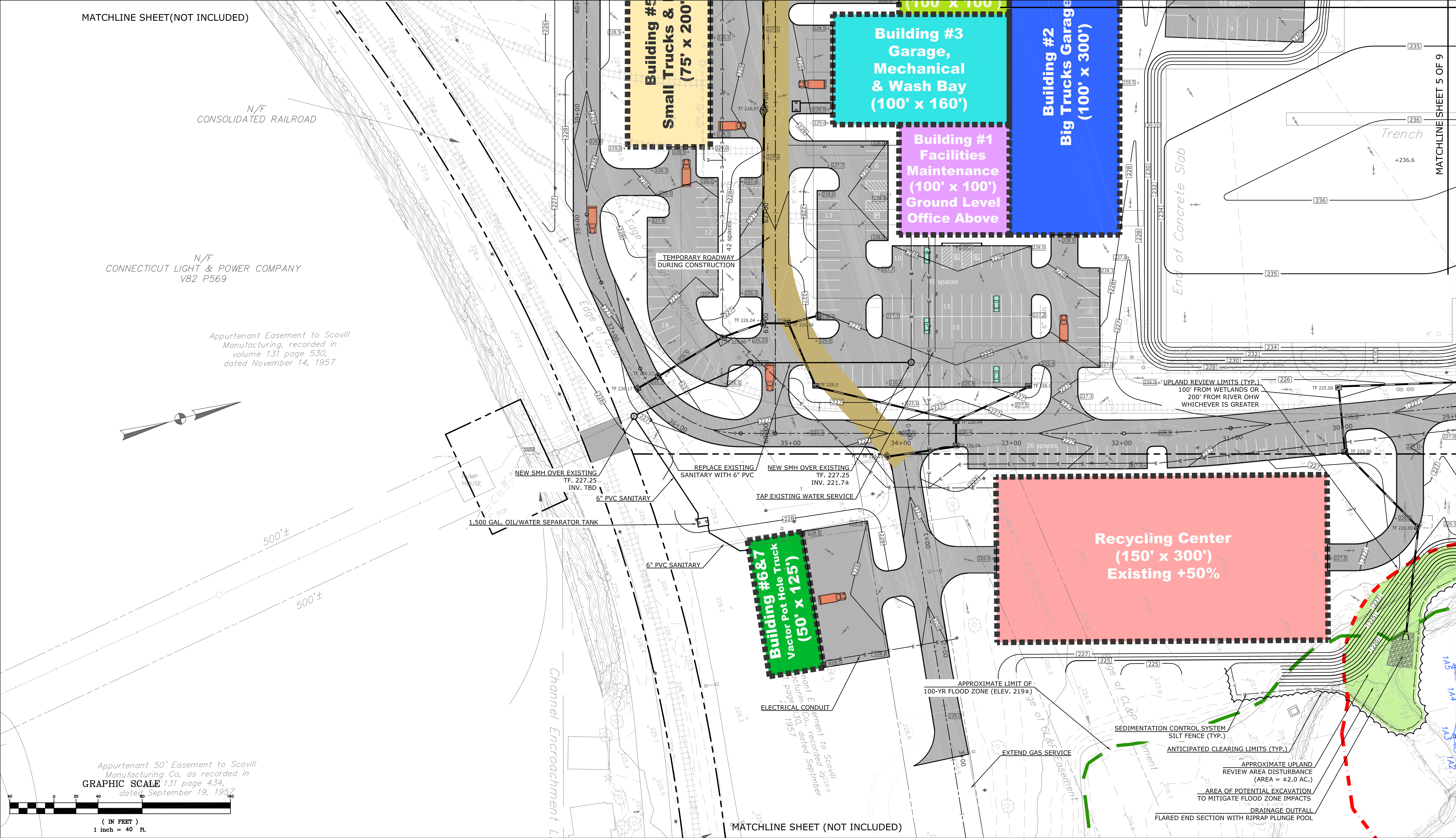
FOR PERMITTING ONLY

SCALE
1" = 80'

WMC
CONSULTING ENGINEERS
• WENGELL, McDONNELL & COSTELLO •
87 HOLMES ROAD
NEWINGTON, CT 06111
(860) 667-9624

PREPARED FOR
TOWN OF NEW MILFORD
10 MAIN ST
NEW MILFORD, CT 06776

PROPOSED OVERALL DEVELOPMENT PLAN NEW PUBLIC WORKS FACILITY NEW MILFORD, CONNECTICUT					SHEET	3
D -	DPW Facility	NM_DPW_PD_	23057.10			
SIZE	PROJECT	FILE NAME	NUMBER	REV.	OF	9



1	03/12/24	UTILITIES ADDED PER TOWN COMMENTS
2	04/11/24	GRADING AND DRAINAGE ADDED
3	05/03/24	UPDATE UTILITY INFORMATION
NO.	DATE	DESCRIPTION
REVISIONS		

SUPV.	S.R.M.
DESIGN	R.E.B.
DRAWN	R.E.B.
CHECKED	S.R.M.
DATE	03/11/24

FOR PERMITTING ONLY

SCALE
1" = 40'

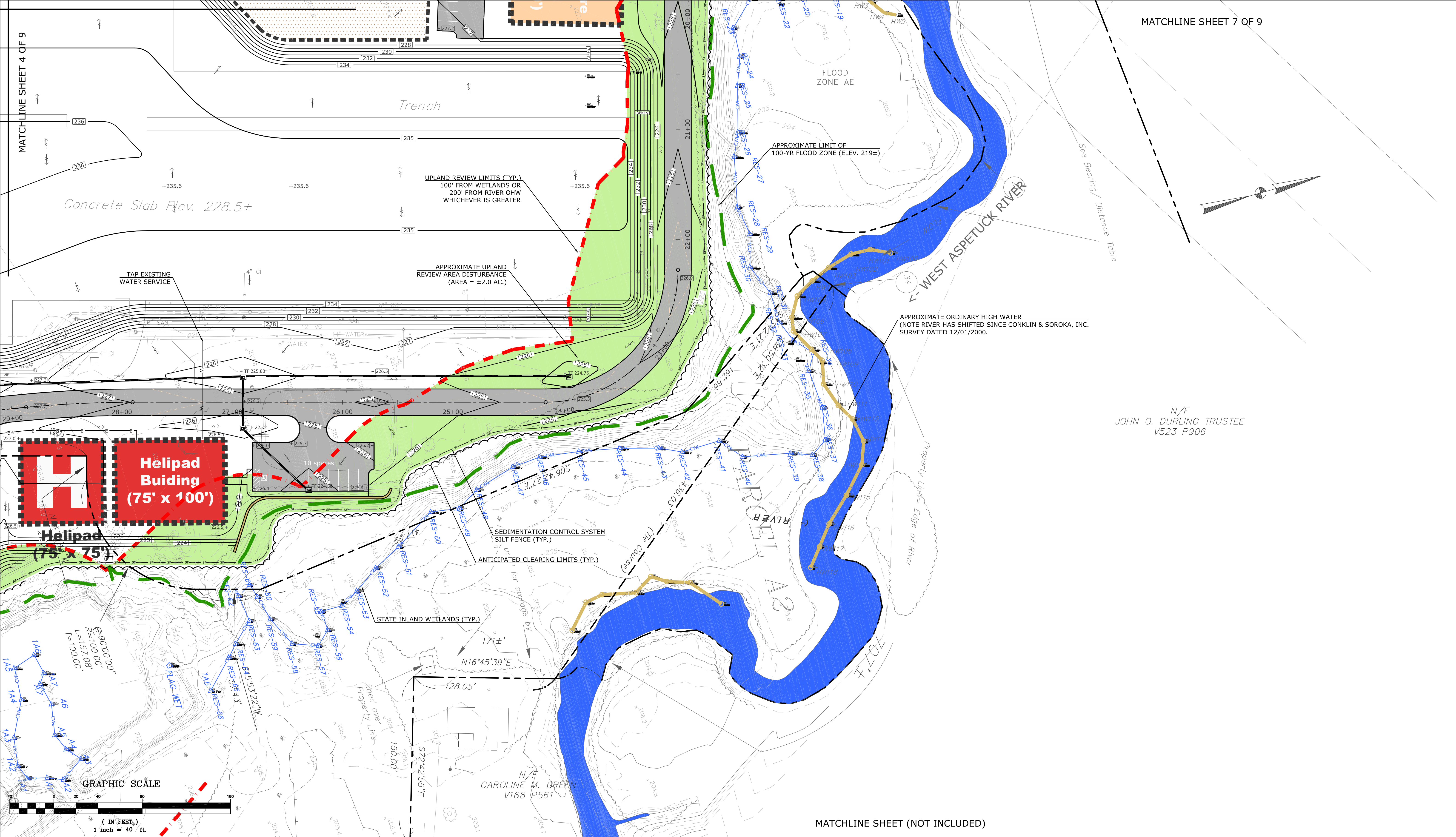


WMC
CONSULTING ENGINEERS

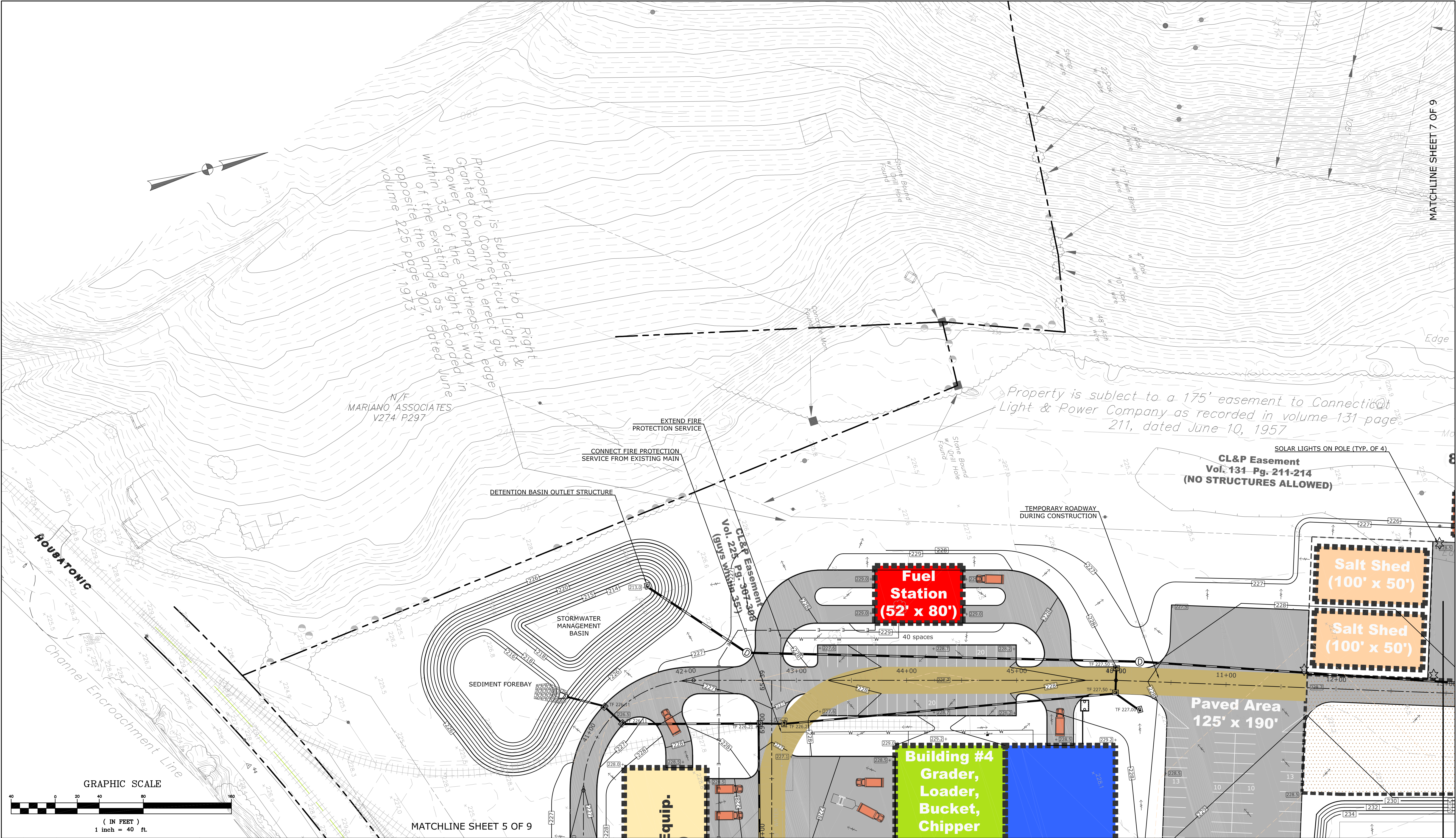
• WENGELL, McDONNELL & COSTELLO •
87 HOLMES ROAD
NEWINGTON, CT 06111
(860) 667-9624

PREPARED FOR
TOWN OF NEW MILFORD
10 MAIN ST
NEW MILFORD, CT 06776

EROSION CONTROL PLAN NEW PUBLIC WORKS FACILITY NEW MILFORD, CONNECTICUT					SHEET 4
D — SIZE	DPW Facility PROJECT	NM_DPW_PD — FILE NAME	23057.10 — NUMBER	— REV.	



<div>10/12/24</div> <div>04/11/24</div> <div>05/03/24</div>	<div>UTILITIES ADDED PER TOWN COMMENTS</div> <div>GRADING AND DRAINAGE ADDED</div> <div>UPDATE UTILITY INFORMATION</div>	<div>SUPV.</div> <div>S.R.M.</div> <div>DESIGN</div> <div>R.E.B.</div> <div>DRAWN</div> <div>R.E.B.</div> <div>CHECKED</div> <div>S.R.M.</div> <div>DATE</div> <div>03/11/24</div>	FOR PERMITTING ONLY	SCALE 1" = 40'	<div><div>WMC</div><div>CONSULTING ENGINEERS</div></div> <div>• WENGELL, McDONNELL & COSTELLO •</div> <div>87 HOLMES ROAD</div> <div>NEWINGTON, CT 06111</div> <div>(860) 667-9624</div>	<div>PREPARED FOR</div> <div>TOWN OF NEW MILFORD</div> <div>10 MAIN ST</div> <div>NEW MILFORD, CT 06776</div>	<div>EROSION CONTROL PLAN</div> <div>NEW PUBLIC WORKS FACILITY</div> <div>NEW MILFORD, CONNECTICUT</div>
<div>NO.</div> <div>DATE</div> <div>DESCRIPTION</div>	<div>REVISIONS</div>					<div><div>D</div><div>SIZE</div></div> <div><div>DPW Facility</div><div>PROJECT</div></div> <div><div>NM_DPW_PD</div><div>FILE NAME</div></div> <div><div>23057.10</div><div>NUMBER</div></div> <div><div>REV.</div><div>OF</div></div>	<div>SHEET</div> <div>5</div> <div>9</div>



1	03/12/24	UTILITIES ADDED PER TOWN COMMENTS
2	04/11/24	GRADING AND DRAINAGE ADDED
3	05/03/24	UPDATE UTILITY INFORMATION
NO.	DATE	DESCRIPTION
REVISIONS		

SUPV.	S.R.M.
DESIGN	R.E.B.
DRAWN	R.E.B.
CHECKED	S.R.M.
DATE	03/11/24

FOR PERMITTING ONLY

SCALE
1" = 40'

**WMC**
CONSULTING ENGINEERS

• WENGELL, McDONNELL & COSTELLO •
87 HOLMES ROAD
NEWINGTON, CT 06111
(860) 667-9624

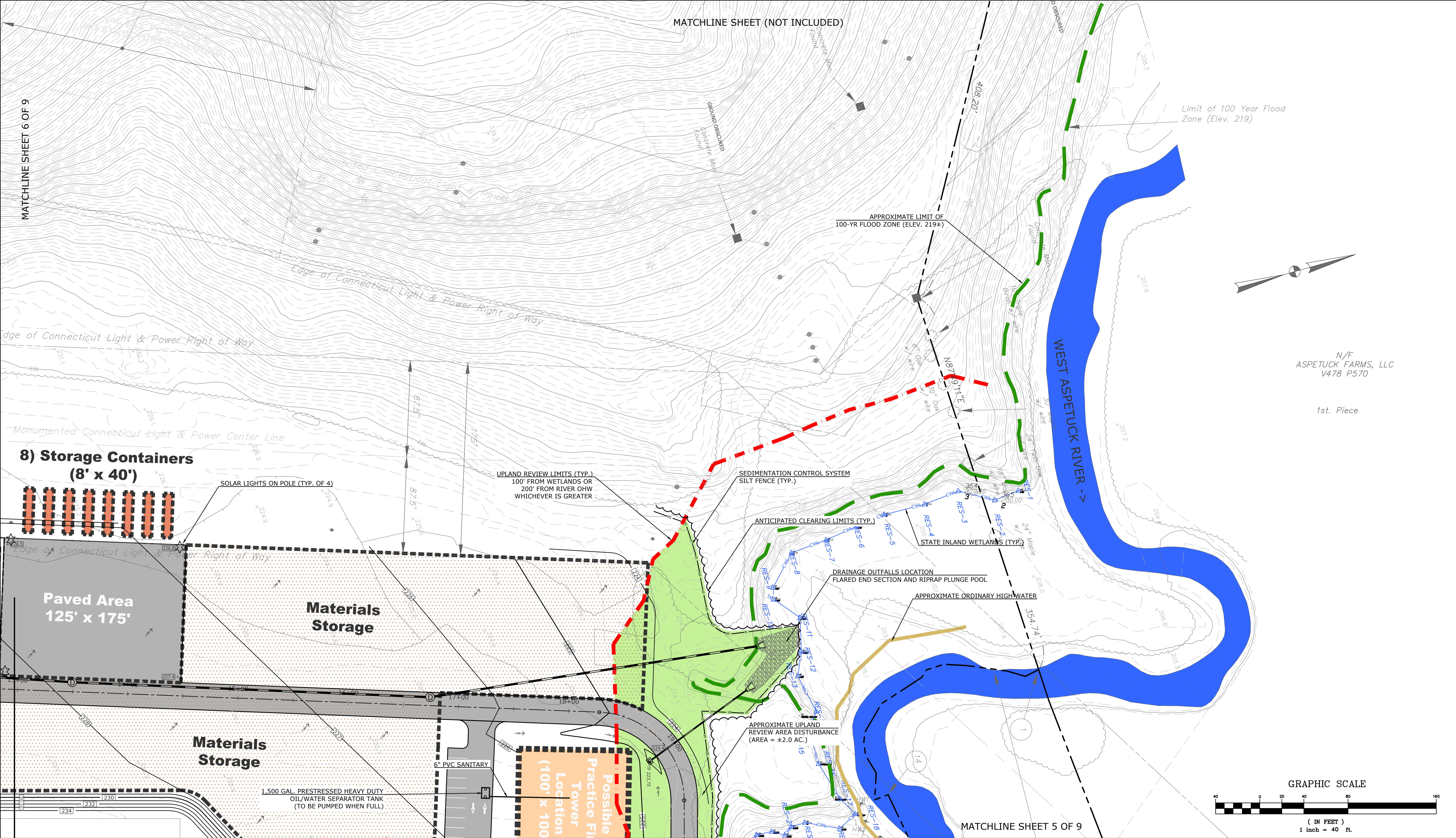
PREPARED FOR
TOWN OF NEW MILFORD
10 MAIN ST
NEW MILFORD, CT 06776

EROSION CONTROL PLAN
NEW PUBLIC WORKS FACILITY
NEW MILFORD, CONNECTICUT

D	DPW Facility	NM_DPW_PD_	23057.10	—
SIZE	PROJECT	FILE NAME	NUMBER	REV.

SHEET 6

9



1	03/12/24	UTILITIES ADDED PER TOWN COMMENTS
2	04/11/24	GRADING AND DRAINAGE ADDED
3	05/03/24	UPDATE UTILITY INFORMATION
NO.	DATE	DESCRIPTION
REVISIONS		

SUPV.	S.R.M.
DESIGN	R.E.B.
DRAWN	R.E.B.
CHECKED	S.R.M.
DATE	03/11/24

FOR PERMITTING ONLY

SCALE
1" = 40'

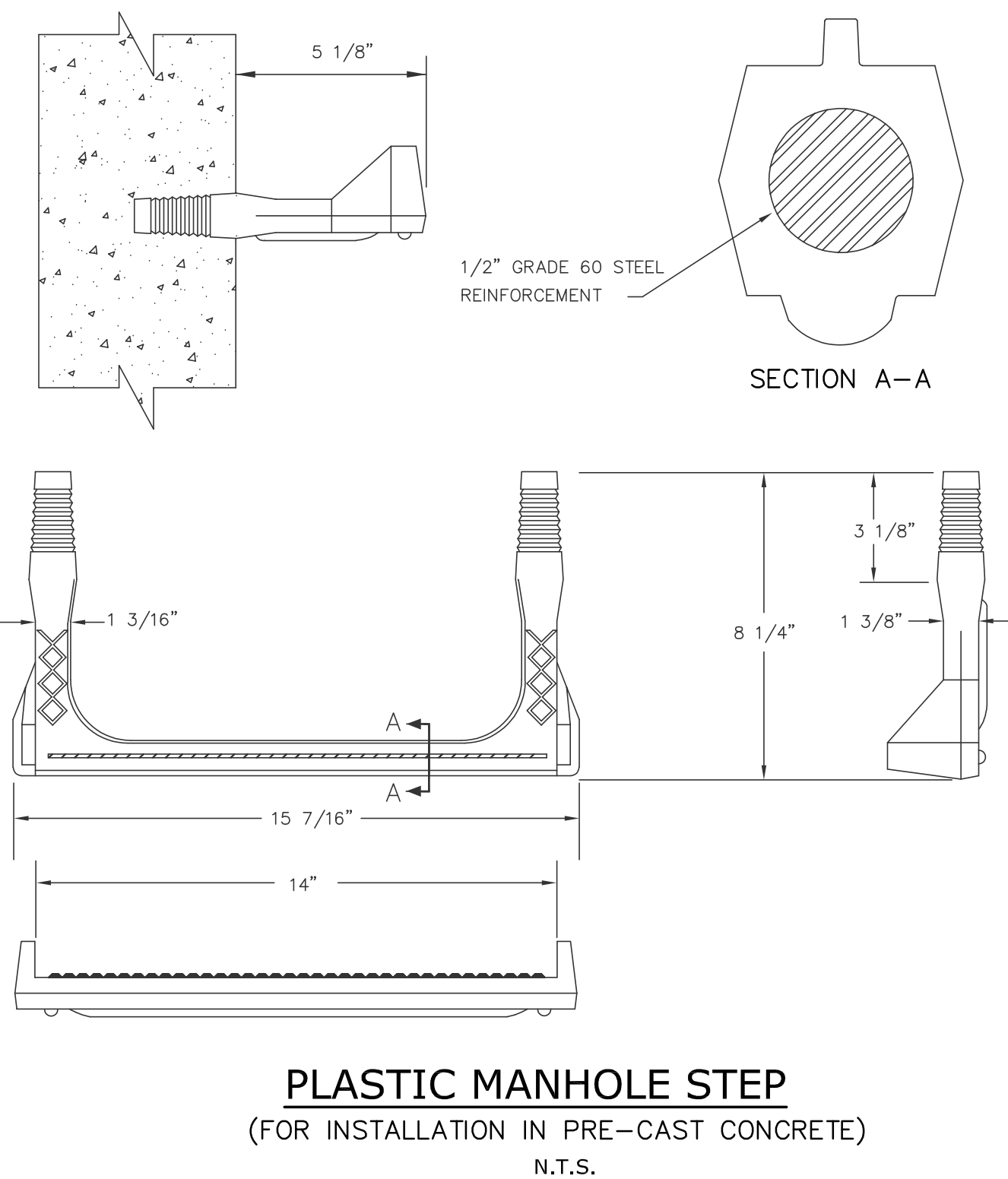
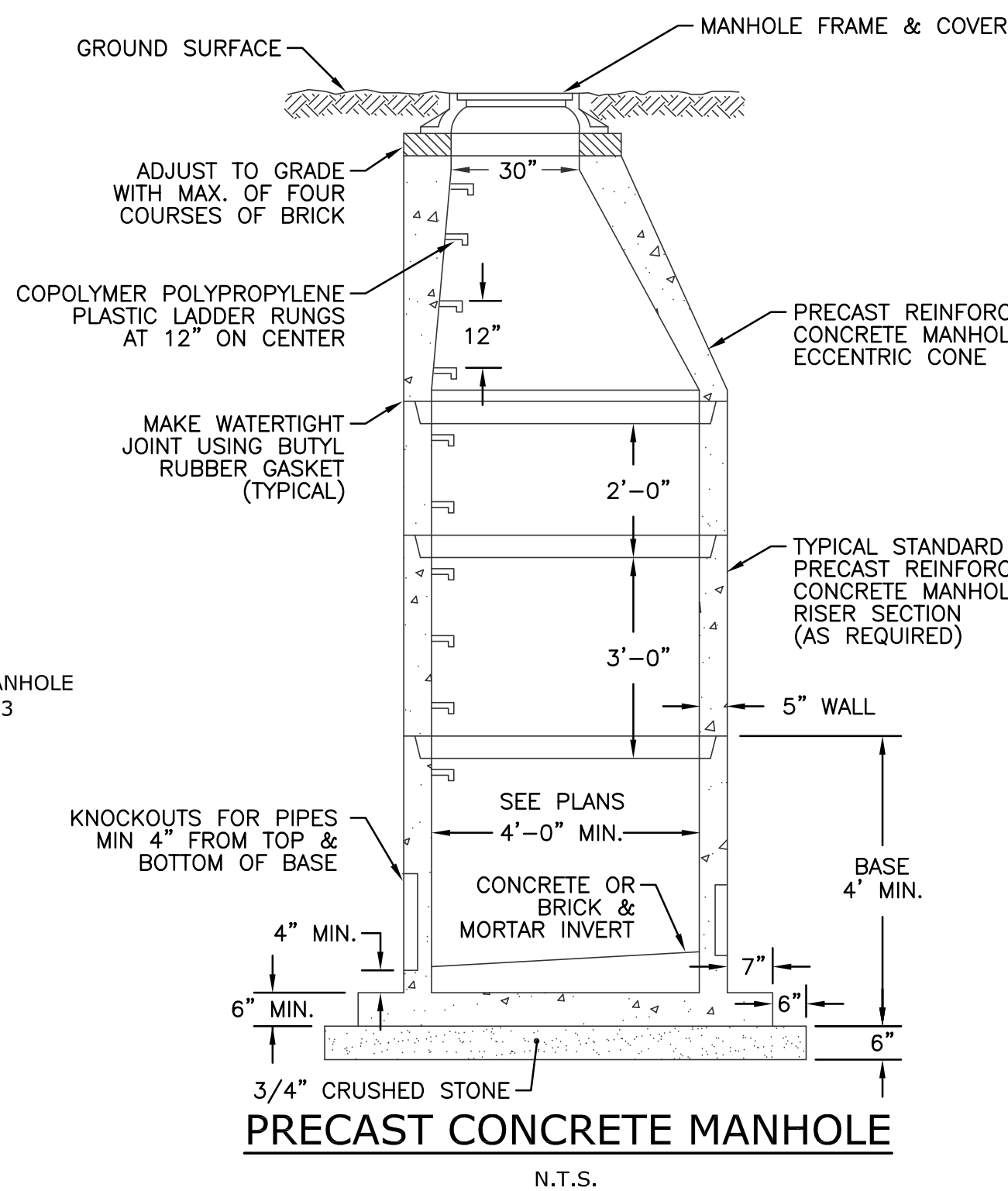
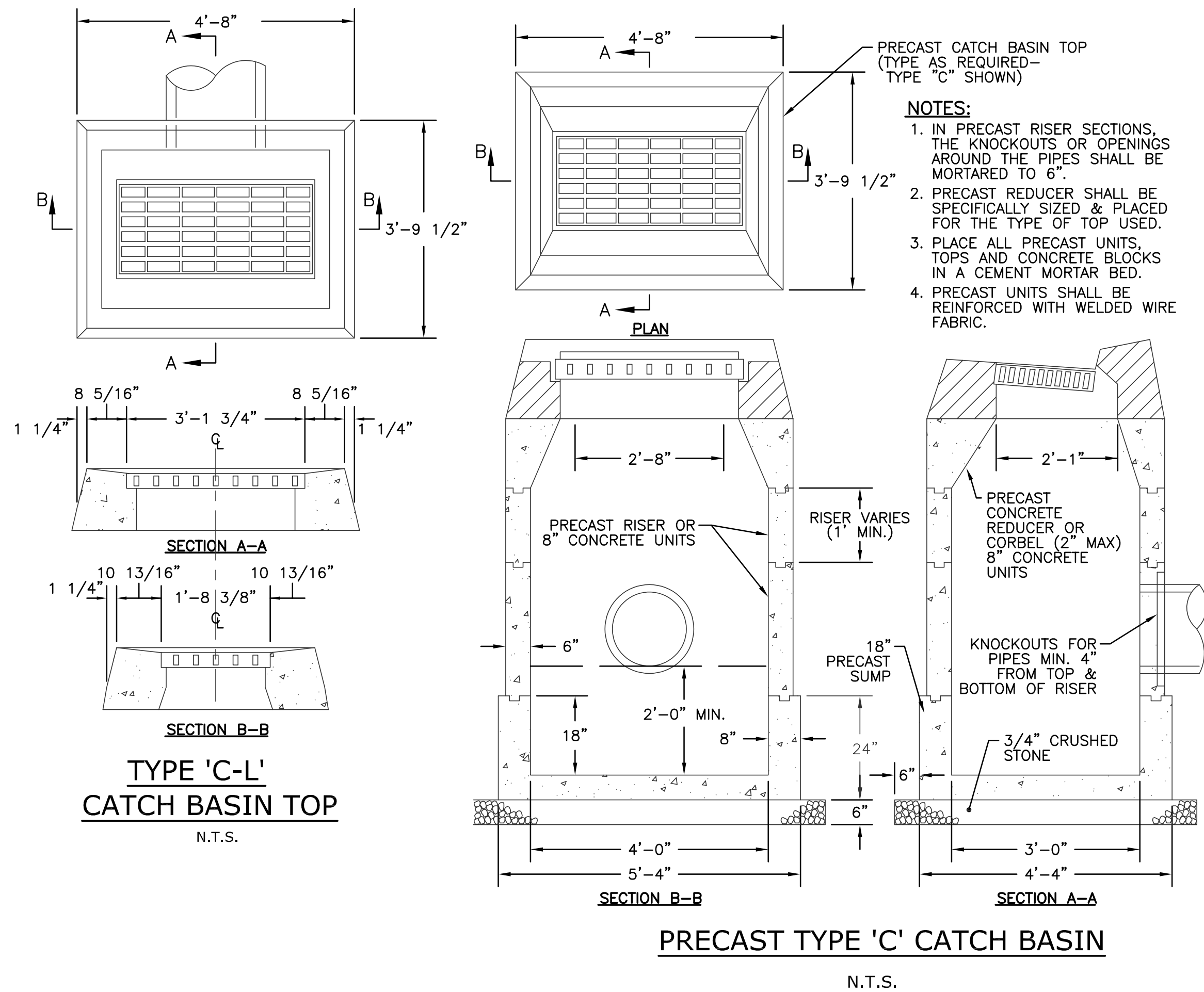
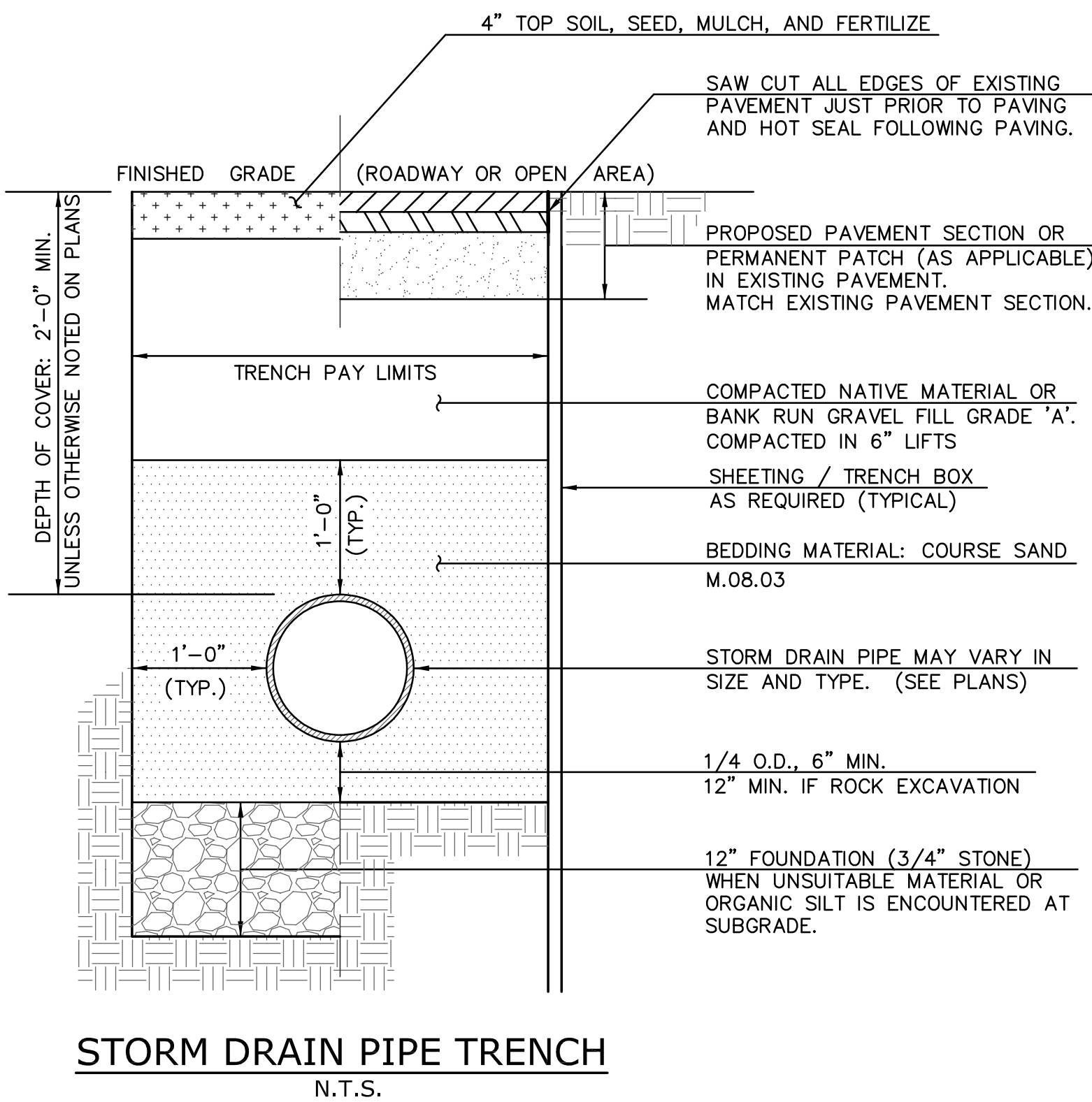
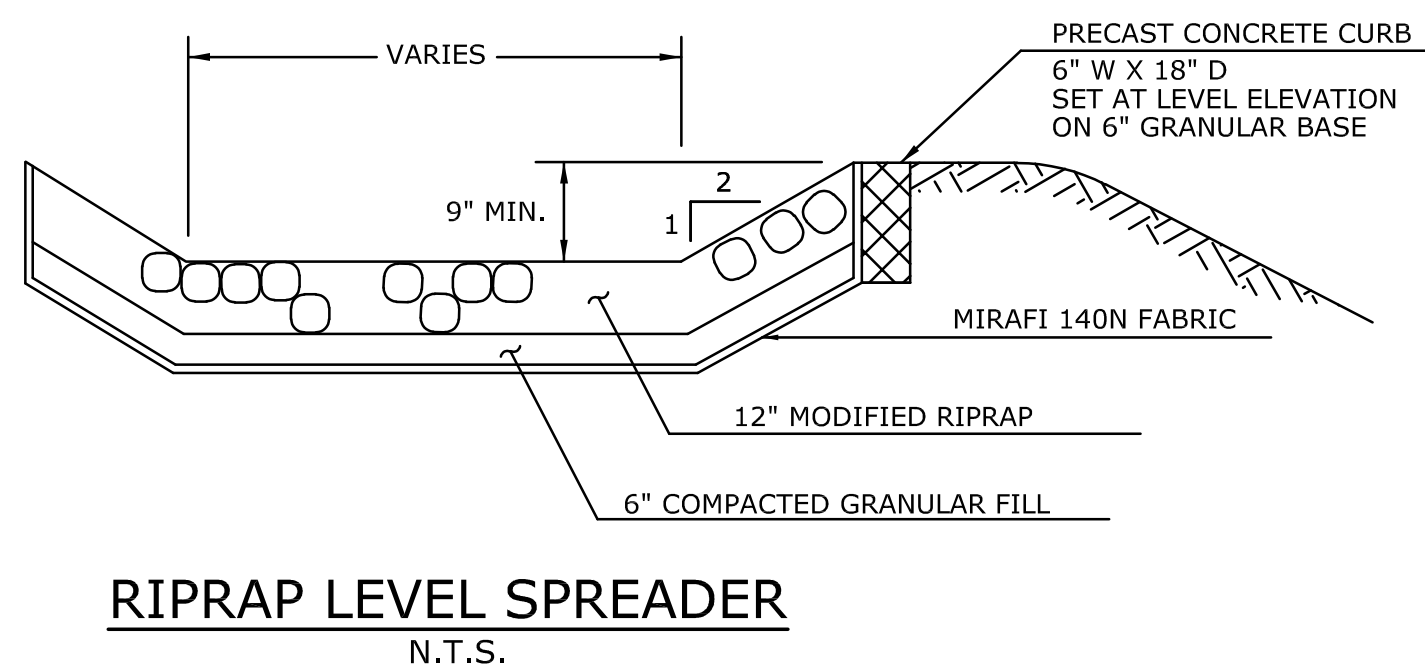
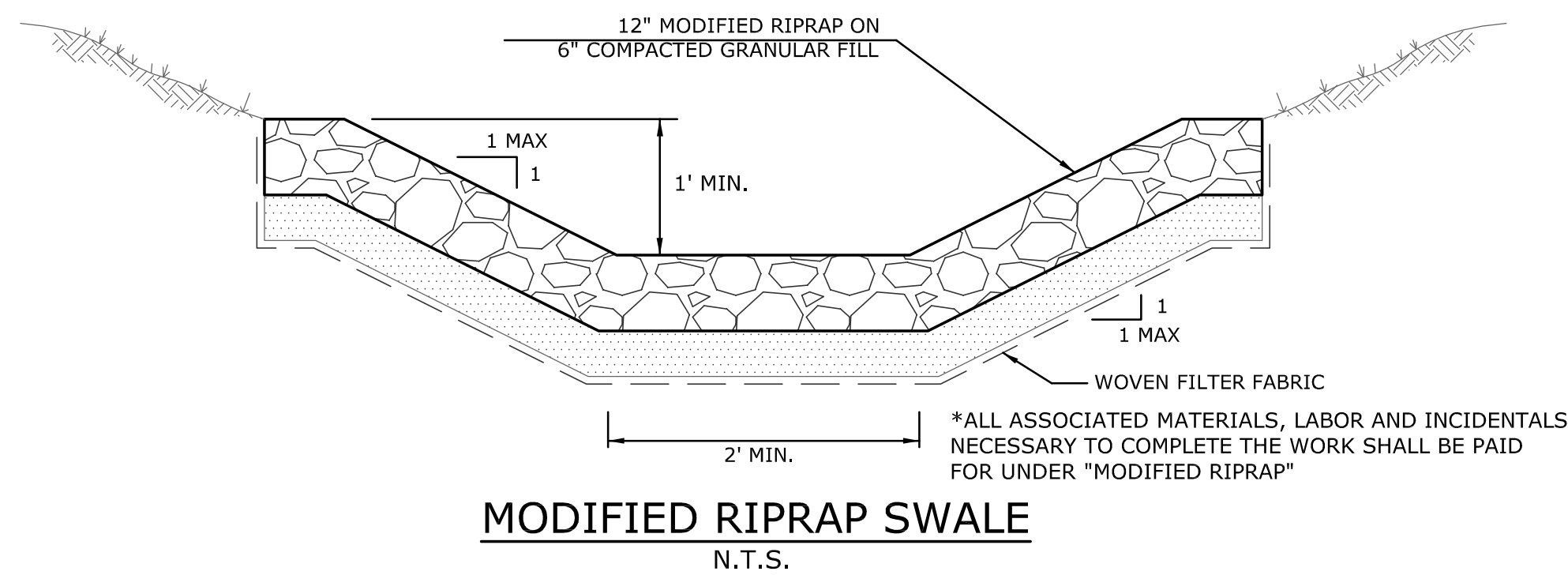
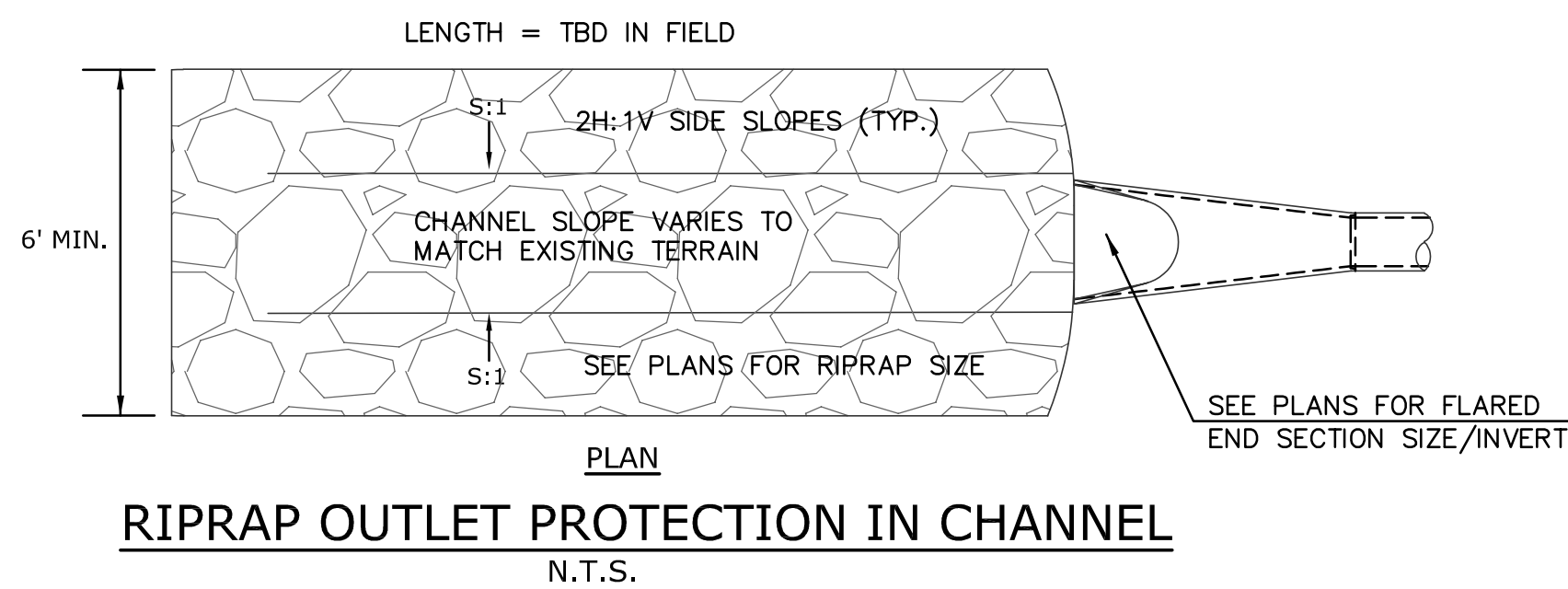
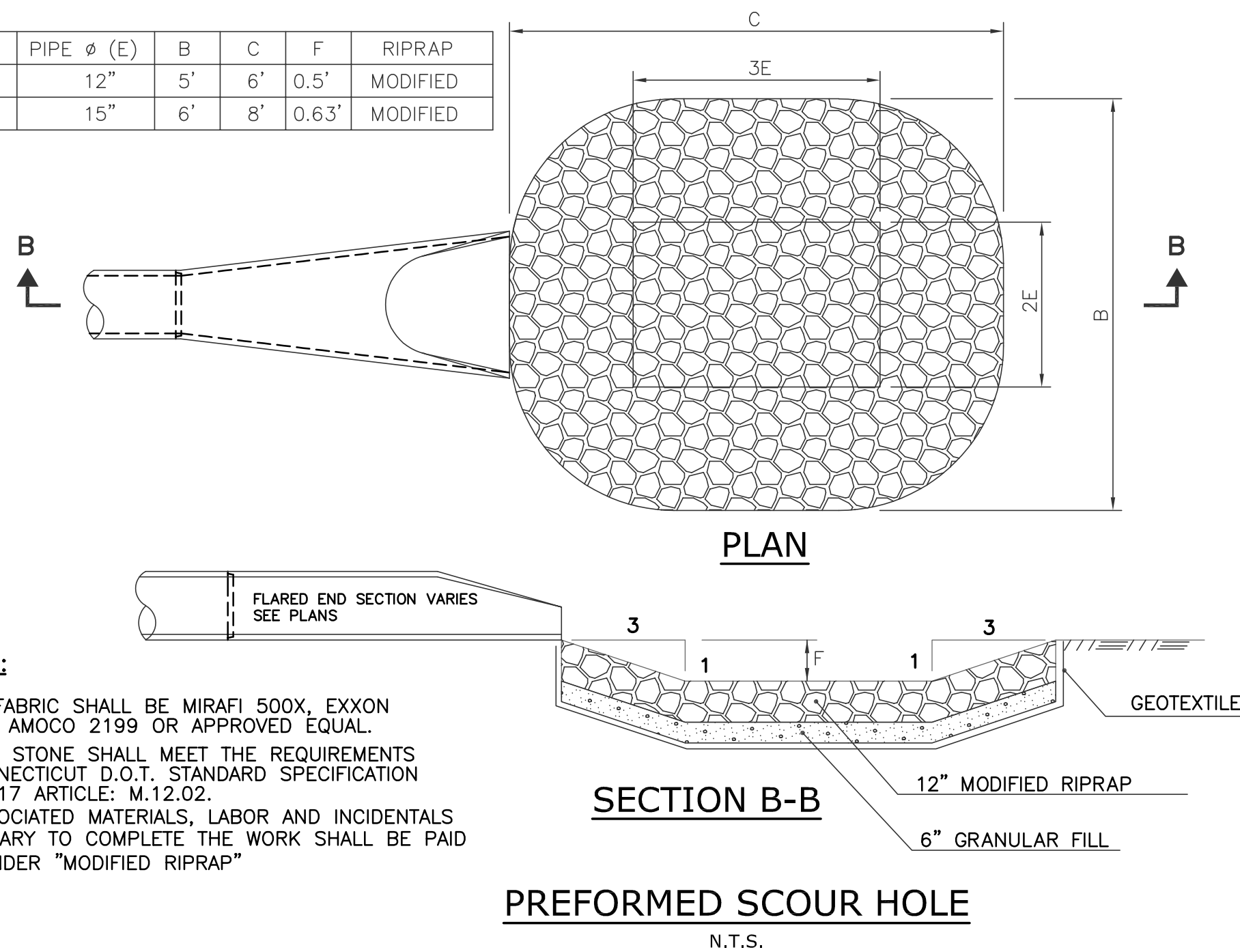
WMC
CONSULTING ENGINEERS
• WENGELL, McDONNELL & COSTELLO •
87 HOLMES ROAD
NEWINGTON, CT 06111
(860) 667-9624

PREPARED FOR
TOWN OF NEW MILFORD
10 MAIN ST
NEW MILFORD, CT 06776

EROSION CONTROL PLAN
NEW PUBLIC WORKS FACILITY
NEW MILFORD, CONNECTICUT

D -	DPW Facility	NM_DPW_PD -	23057.10	-	SHEET	7
SIZE	PROJECT	FILE NAME	NUMBER	REV.	OF	9

LOCATION	PIPE Ø (E)	B	C	F	RIPRAP
FES 12"	12"	5'	6'	0.5'	MODIFIED
FES 15"	15"	6'	8'	0.63'	MODIFIED



03/12/24 UTILITIES ADDED PER TOWN COMMENTS			SUPV.	S.R.M.	FOR PERMITTING ONLY	SCALE N.T.S.	<div><div><div></div></div>WMC</div> <div>CONSULTING ENGINEERS</div> <div>• WENGELL, McDONNELL & COSTELLO •</div> <div>87 HOLMES ROAD</div> <div>NEWINGTON, CT 06111</div> <div>(860) 667-9624</div>	PREPARED FOR	TOWN OF NEW MILFORD	10 MAIN ST	NEW MILFORD, CT 06776	SITE DRAINAGE DETAILS	NEW PUBLIC WORKS FACILITY	NEW MILFORD, CONNECTICUT	SHEET 8	
2 04/11/24 GRADING AND DRAINAGE ADDED			DESIGN													R.E.B.
			DRAWN													R.E.B.
			CHECKED													S.R.M.
NO. DATE DESCRIPTION			DATE													03/11/24
REVISIONS																

NOT BE SHALL BE PIPED TTED. G OR FLOWING OF STONE AS EDIMENT SPILLED, IT-OF-WAY. WHEN O AN APPROVED	
PREPARED FOR TOWN OF NEW MILFORD 10 MAIN ST NEW MILFORD, CT 06776	EROSION CONTROL NOTES NEW PUBLIC WORKS FACILITY NEW MILFORD, CONNECTICUT
D — DPW Facility — NM_DPW_PD — 23057.10 — SIZE PROJECT FILE NAME NUMBER REV.	SHEET 9 OF 9