

# NEW MILFORD SOCIAL SERVICES

January 2022



## Greetings from New Milford Social Services

“Happy New Year!” This is a very common Seasonal greeting we offer each other as a wish that the New Year may bring good financial and social wellbeing and emotional and physical good health. We start the year with resolutions to recharge our commitment to improve aspects of our lives and to attain a better sense of wellbeing. And, we look for opportunities and resources that can help take the steps towards our financial, social or health goals. New Milford Social Services continues a commitment to offer connections and options towards the improvement or betterment that you are seeking. Hopefully, as you read this newsletter, you will find resources that you’ll find helpful to your personal situation or the situation of a dear friend, family member, or neighbor. The newsletter contains connections to jobs, heating assistance, food, financial savings, and COVID resources. Last year, we introduced monthly appointments with a Career Navigator to offer local assistance with job connection, training and resume building. We continue this in 2022 so, please see page 3 for February’s visit and making an appointment! We have also reconnected with VITA for FREE tax return preparation. They will be back in our office in February through April. Page 2 has more details. Please note that they will be running their appointments a little bit different this year because of COVID. In addition, we brought back Financial Literacy Classes in 2021. We offered a virtual 18-week full course on financial education including topics on budgeting, credit, savings and investing to name some of the 10 topics covered! This was a great success and we plan to bring this full course back in 2022. Keep an eye out in the Spring for information. In the meantime, we are offering a special 4-part virtual course on TAXES in February. Information for this class is below. We are excited to be able to continue to provide local access to valuable resources and other connections to basic needs. Please continue to reach out as you need and we will do our best to respond. From all of us, we wish you a new year of opportunities, good health and well-being

~Ivana



### VIRTUAL FINANCIAL EDUCATION CLASSES:

“Understanding TAXES in 4-parts”

Email [socialservices@newmilford.org](mailto:socialservices@newmilford.org) to register:

All classes will be from 6:00pm-7:00pm

\*Wed. Feb 23<sup>rd</sup>- Taxes and Your Pay Stub (explain where income taxes are collected from & how they provide revenue for public expenses; read a pay stub and describe the different deductions)

\* Mon. Feb 28<sup>th</sup>- Tax Cycle and Paperwork (identify important dates of the tax cycle, difference between common tax forms, purpose of a W-4 and how it impacts your paycheck)

\* Wed. March 2<sup>nd</sup>- How to File Your Taxes (identify items needed to prepare a return, different ways to file, understand the purpose of a W-2 and how to use it to file, explain how to make a tax payment if owed)

\*Mon March 7<sup>th</sup>-Completing the 1040 (practice completing a 1040 form)

### Our Staff:

*Monika Roberts, Office Coordinator*

*Maria De Oliveira, Social Worker & Diverse Community Advocate.*

*[Maria habla español y portugués]*

*Lauren Haire, Social Worker & Volunteer Coordinator*

*Ivana Butera, Director*

*The mission of New Milford Social Services is to offer resources and programs to enhance the well-being and self-sustainability of New Milford residents experiencing financial hardship by addressing basic needs including food and household self-sufficiency.*

*We support our community through empowerment, advocacy, compassion and connection to opportunities to increase the resilience of our residents in need.*

### Programs

*(Please note that income guidelines vary per program. Please call us with any questions)*

*\*New Milford Food Bank*

*\*Energy (Heating) Assistance*

*\*Emergency Financial Assistance [limited funding] & Counseling re:*

*Rent/Mortgage*

*Home bills*

*Child Expenses*

*Medical Bills*

*Transportation Costs*

*Food & Clothing*

*\*Basic Need Assistance*

*\*Counseling/Crisis Intervention-limited Financial Literacy*

*\*Information and Referral: Local, State, Federal resources and entitlement programs*

*\*Renter’s Rebate for disabled renters under age 60. [Seasonal]*

*\*Family Programs:*

*Baby Bundle Registration*

*Camp and Enrichment Activity Scholarships for Children [limited funding]*

*Back to School Program Registration [seasonal]*

*Winter Holiday Gifts Children [seasonal]*

*[\*Funding based on State grants or community donations]*



2 Pickett District Rd.

New Milford, CT 06776

(P) 860-355-6079

(F) 860-355-6019

Email: [socialservices@newmilford.org](mailto:socialservices@newmilford.org)

Website: [www.newmilford.org](http://www.newmilford.org)

New Milford Social Services

*We welcome and respect the diversity of all who enter our office.*



## PROGRAM UPDATES:



### ENERGY and UTILITY ASSISTANCE: Currently taking applications:

New Milford Social Services is the local agency to assist residents under the age of 60 with the following programs. *Please contact our office for more information and guidelines to apply. [If you are over the age of 60 please contact the New Milford Senior Center]*

- **CT Energy Assistance Program (CEAP)** We are taking applications for deliverable fuels (oil, kerosene, propane, wood) or electric heat. **Please call the office so we can send you the application packet.** In aligning with safety and health guidelines, we are asking for packets to be filled out, signed, and returned to our office as soon as possible. Please include all required income and relevant documentation. An incomplete application can slow down the process. **If you would like to make an appointment to complete the application with a social worker, please call the office.**
- The income guidelines for this State program are:  
The income guidelines for this State program are:

#### 60% SMI- CEAP income guidelines: based on Family size

1	2	3	4	5	6
\$39,027	\$51,035	\$63,044	\$75,052	\$87,060	\$99,069

- All **electric heated households** who completed the Matching Payment program last year will be automatically re-enrolled onto Eversource's MPP. **Remember that you still need to re-apply for Energy Assistance through our office every year!** In addition to re-applying all payments need to be in by the end of each month, and *all* six payments must be received by April 30<sup>th</sup> in order to get a "match". If Eversource raises your budget, pay the new amount if you can. If you cannot, pay the old amount and be sure to discuss this with us at the time of your application, you may qualify for a below budget worksheet.
- There are limited funds available through the State Energy Program that can help with furnace repair/replacement and furnace clean, tune, and test.
- **Winter Protection Program** helps protect your Eversource account from being shut off while you work on getting on and following through with a payment plan like NewStart or Matching Payment Program. Please call our office and we can code your account through this program.
- **Operation Fuel** Winter program started on December 1<sup>st</sup>. Remember, Operation Fuel's income guidelines go up to 75% of the State Median Income. Please call our office with inquiries.
- The **Community Fuel Bank** is also available for an emergency assist. Exploring the above programs is part of the process before CFB is accessible.
- \*\*\*The State of CT also launched a **water/waste water program** to offer financial assistance towards a past due or current bill, or prevent a shut off. You can apply at the same time as with the heating assistance program.



### **COAT DISTRIBUTION HAPPENING**

**JANUARY 29<sup>th</sup> from 10am-1pm @ JPCC.**

Drive up for a gently used/new coat for adults or children. Mask required/ please stay in your car and volunteers will help find a coat. Hats, gloves, and scarves may also be available. This coat drive is sponsored by our community partners- 'A Little Help from My Friends'



In our office, we do have a limited supply of new coats for children size small to large and some small pajamas. Call us for available sizes.



**TAX TIME! FREE PREPARATION**  
By VITA: Volunteers will be here at our office beginning February 16<sup>th</sup>- April 8<sup>th</sup>.

Appointments can be made online @ <https://danbury-vita.org/>. Appointments are DROP-OFF; then return for signature. ID is required and please have all your documents ready such as W-2; 1099 forms; documents for other forms of income (ex. self-employment, alimony); SS cards or ITIN cards for all members of household; routing # and bank account # for direct deposit. For a complete list, please refer to their website.

### **Enrollment starts NOW and ENDS EARLY- Plan Now- Space is Limited**



Sign up now for overnight away camp at **CAMP CONNRI, Ashford, CT**, ages 8 years to 12years old. **Signup ends on April 1, 2022** so please call the office to get your paperwork into New Milford Social Services, 860-355-6079 x1. Ask Monika for additional information. **The camp dates we are sponsoring are Aug 1st thru Aug 5th and we (New Milford Social Services) will provide the transportation through the New Milford Youth Agency. The week's theme is "Fear Factor Camp". Make checks payable to "Salvation Army" for \$35.00 (What a Deal!) Applications will need to include an up-to-date medical form for each camper.** Also, check out website at [campconnri.salvationarmyct.org](http://campconnri.salvationarmyct.org) for more info.



## ~COVID-19 TESTING & VACCINE Clinic



~NEW MILFORD OFFERS COVID-19

### weekly testing ...

Monday, Tuesday, Wednesday 9am-6pm

Friday 9am-6pm

Saturday 10am-3pm

@John Pettibone Community Center

Appointments made online at [www.newmilford.org](http://www.newmilford.org)



### ... and vaccine clinics

Even though it may be asked, it is **NOT** required for adults to show ID or have insurance. It **IS** required for minors to show proof of age. Please visit Town of New Milford website for dates and registration times:

[www.newmilford.org](http://www.newmilford.org)

- Free test kits available to each household from the Federal Government: <https://special.usps.com/testkits>
- If you are experience issues with inputting your address for the test kits: call 1-800-ASK-USPS or [emailus.usps.com/s/the-postal-store-inquiry](mailto:emailus.usps.com/s/the-postal-store-inquiry)

## COVID 19 RESOURCES (HOUSING & INTERNET)

Please contact our office if you need any assistance with applying for these programs.

## UniteCT

-Emergency Rental Assistance for Connecticut's Economy-

Provides emergency rental (up to \$15,000 in back & future rent) and utility assistance (\$1500) for those experiencing financial hardship due to COVID-19 in 2020 or 2021. THIS IS FOR TENANTS AND LANDLORDS to APPLY @

<https://portal.ct.gov/DOH/DOH/Programs/UniteCT>  
1-888-UniteCT (1-844-864-8328).

Cualquier persona que no tenga un número de seguro social o ITN puede llamar al CIRI (Instituto de Connecticut para Inmigrantes y Refugiados) para obtener ayuda con el alquiler al (203) 336-0141

## HOMEOWNERS help @



<https://portal.ct.gov/DOB/Consumer/Consumer-Help/COVID-19-Mortgage-Relief>

<https://www.chfa.org/>

<https://www.fanniemae.com/here-help-homeowners>

## INTERNET SERVICE:



The FCC launches the AFFORDABLE CONNECTIVITY PROGRAM (ACP) as a longer-term replacement for the Emergency Broadband Benefit (EBB) program. This program can help to connect households to more affordable broadband for the needs of work, school, health care, etc. The ACP provides a discount up to \$30/month for eligible households (\$75/month for tribal land households), and a one-time discount of up to \$100 to purchase a laptop, desktop computer, or tablet from participating providers if they contribute more than \$10 and less than \$50 towards the purchase price. Enroll online @ <https://acpbenefit.org/>



## JOB SEARCHING?

New Milford Social Service assists with employment opportunities and training by informing, displaying, and connecting job/training opportunities for our community. We have a job board in our office & we will email new information to our mailing list. We also welcome the Northwest Regional Workforce Investment Bureau to New Milford. They will be here every **FIRST THURSDAY** of the MONTH from 9am-11am, to offer information and connection to employment resources. To make an appointment to meet with their workforce advisor, please call our office or email us. See the flyer below for the next time they are here.

**Onward CT-** one stop resource for people of Connecticut who have been impacted by COVID-19 and lost their job: <https://onwardct.org/>

**CT Hires** is a website provided by CT Department of Labor: For job search or exploring careers: <https://www.cthires.com/vosnet/Default.aspx>

**TBICO** is an area agency dedicating to helping people re-enter the workforce, build-up their employable skills, become self-sufficient and financially mobile. 203-743-6695 <http://www.tbicoworks.org/>

**New Milford Adult Education:** GED/ job training classes: <https://www.newmilfordps.org/adulteducation>  
860-350-6647 x 1170

**Literacy Volunteers on the Green:** Free ESL classes, improve literacy goals: <https://www.lvg-ct.org/> or 860-355-0630

UNITED WAY PRESENTS:



**Are You Working Hard?  
Struggling to Make Ends Meet?  
Prosperi-Key Can Help!**

Prosperi-Key is a one-stop, 24/7 digital platform designed specifically to help people who work hard but have trouble paying all their bills.

Log on to [prosperikey.org](http://prosperikey.org) and you'll learn about:

- supports and services from nonprofits and government providers that benefit hardworking people like you
- offers and savings from local businesses that can make your life easier

The qualifying household budget for Prosperi-Key is much higher than the federal poverty limit. For example, families with two adults, an infant, and a preschooler can be making a household income as high as \$55 per hour. Single adult households can be earning as much as \$18 per hour, or living on a fixed retirement income.

To learn more, call 203-792-5330.



**HEALTHY SAVINGS**

**MORE HEALTHY FOOD FOR LESS!  
\$10 OF FRESH PRODUCE EACH WEEK**  
at your local participating grocery store  
No minimum purchase or match required!

ADDITIONAL WEEKLY SAVINGS on healthy foods such as milk, whole-grain breads, lean meats, yogurts, beans, cereal, eggs, and much more. Saving is as easy as swiping your Healthy Savings card or scanning your app at check-out!

Eligibility is based on residence in the 15-town region we serve in Fairfield and Litchfield Counties and income qualification. Please note: one Healthy Savings account per household.

SIGN UP TODAY at [prosperikey.org](http://prosperikey.org)

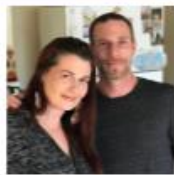
QUESTIONS? [healthysavings@uwwesternct.org](mailto:healthysavings@uwwesternct.org) or 203-883-0879



**ALICE SAVES**

**It's Easy. It's Free.  
It's Saving Made Simple.**

The Connecticut United Ways and nonprofit SaverLife bring you ALICE Saves, a free program for Connecticut residents designed to help you build your emergency savings fund and improve your financial well-being.



- New savers earn a \$20 match for saving \$60 every three months.
- Sign up today and get a \$25 gift card.
- Every quarter, join the Race to \$200 challenge. Save \$200 for a chance to win a \$200 or \$1,000 prize.

For more information, visit [CTALICESaves.org](http://CTALICESaves.org) or contact United Way of Western Connecticut at 203-792-5330.

**You'll also get Free Financial Advice with TrustPlus**

During these uncertain times, let TrustPlus financial coaches help you make the most of your hard-earned paycheck or, for those no longer getting a paycheck, put together a strategy for making ends meet.

ALICE Saves has partnered with Neighborhood Trust Financial Partners, a national leader in financial coaching, to offer free financial coaching online and by phone.

To schedule a 30-minute session with a coach of your choice at a time convenient to you, text AliceSaves to 645-349-5959.

ALICE Saves, a program of Connecticut United Ways, helps working families kick start their savings and get on a path to financial security. It combines two award-winning programs, SaverLife and TrustPlus, to provide savings rewards and financial coaching to help families establish and maintain good financial habits. All programs are offered at no cost to Connecticut residents.

Brought to you by:



**COMMUNITY CULINARY SCHOOL of  
Northwestern CT:**



Community Culinary School of  
Northwestern Connecticut  
40 Main St.  
New Milford, CT 06776  
203-512-5791 fax 860-355-6019  
Website: [communityculinaryschool.org](http://communityculinaryschool.org)

**FREE CULINARY JOB TRAINING at the Community Culinary School**  
New session starts January 3<sup>rd</sup>

Are you interested in FREE job training leading to a career with benefits, competitive wages, opportunity for advancement? Community Culinary School has a proven track record of preparing students for food service careers with a 96% job placement rate. There are a wide variety of positions available for different interests and skill levels in healthcare, schools, corporate cafeterias, etc. This could be you:

- Gi, a single mother, worked her way up to Culinary Services Director at a senior living facility.
- Holly, laid off in her 50's, now has a steady job with full benefits at a private school.
- Josh, a high school graduate without the means for college, is the lead cook at an area hospital.

Do you have concerns about the training or employment? Let's get those out of the way!

- No food service experience? You'll receive hands-on, real-world training preparing meals for the New Milford Food Bank and the New Milford Senior Center as well as in internships.
- Can't afford uniforms or materials? We have you covered! There is no cost to you.
- No resume, nervous about interviewing, not sure how to navigate the job search process? Training includes employment skills with resumes prepared for all students
- Transportation issues? We're centrally located in downtown New Milford on the Hart bus line.
- Classroom work not your favorite thing? Training is primarily hands-on.
- Concerned about coordinating work schedule and childcare? Employment with flexible hours available.
- Where will you work? We're connected! Healthcare, corporate cafeterias, schools, markets, etc. provide internship and employment opportunities.
- Need health insurance? Positions with full benefits available
- Worried about getting back to work after a long lay-off? We'll get you back on track!
- Not sure if this is the right career path for you? Contact Dawn Hammacott at 203-512-5791 for a no-obligation conversation to explore the possibilities and learn more about the food service industry. No pressure!

Start the process now for their next session in APRIL  
Applications at our office and on their website:

<https://communityculinaryschool.org/>



**VIRTUAL SUPPORT GROUPS 2022**  
CONTACT KAREN.1@THECENTERCT.ORG  
WINTER 2021-2022  
ALL SERVICES ARE FREE AND CONFIDENTIAL AND ZOOM BASED

**\* SOAR \***

A support group for female victims of domestic violence  
Tuesdays, 6:30-8:00pm

**\* VOICES OF COURAGE \***

A group for male survivors of sexual assault or abuse  
Mondays, 6:30-8:00pm

**\* THRIVE \***

A group for women with relationship issues or past traumas  
Mondays, 11:00am-12:30pm and Tuesdays, 4:00-5:30pm.

**\* BREAKING THE SILENCE \***

A group for female survivors of sexual assault or abuse  
Mondays, 5:00-6:30pm

**\* Guys' Group**

A group for men in unhealthy relationships or experiencing Domestic Violence  
Tuesdays 6-7

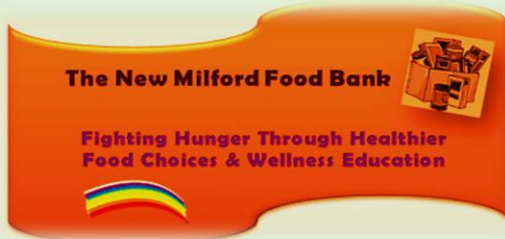
**\* Your Best Life \***

A workshop to focus on coping skills and support systems  
Thursdays, 4-5pm



# Welcome to the New Milford Food Bank

Food Bank days for distribution:



## HOURS

**Thursdays: 9 a.m. -4 p.m.**  
@ New Milford Social Services  
2 Pickett District Road

Choice pantry. Please bring your own bags. Pre-registration required. Masks Required. COVID- 19 safety & health protocols practiced.

*“This institution is an equal opportunity provider”*

## Jan 2022

S	M	T	W	TH	F	S
						1
2	3	4	5	6	7	8
9	10	11	12	13	14	15
16	17	18	19	20	21	22
23	24	25	26	27	28	29
30	31					

## Feb 2022

S	M	T	W	TH	F	S
		1	2	3	4	5
6	7	8	9	10	11	12
13	14	15	16	17	18	19
20	21	22	23	24	25	26
27	28					

## *Hello from your New Milford Food Bank!*

We hope you have made it food bank recently and are enjoying your experience. We are always looking for areas to improve so if you have comments or recommendations we'd love to hear them. You can email the food bank at [lhaire@newmilford.org](mailto:lhaire@newmilford.org).

We do not always have sugar and oil, so below is information from [northeastiovafoodbank.org](http://northeastiovafoodbank.org) about a creative way to use apple sauce for baking in place of oil or sugar.

Canned Applesauce: Oil Substitute for Baking Applesauce replaces a 1:1 ratio in a baking recipe Directions 1. If a recipe calls for 3/4 cup of oil use 3/4 cup of applesauce. Sugar Substitute for Baking Applesauce can also be used to replace a 1:1 ratio of sugar in a recipe.



Only choose one substitute for a single baking recipe.

*Happy baking everyone and see you Thursday's*



**NEW MILFORD SOCIAL SERVICES will be closed for the following upcoming holidays:**  
**Monday, January 17<sup>th</sup> for Dr. Martin Luther King Jr Day**  
**Monday, January 21<sup>th</sup> for Presidents Day**

## *Other Community Food Programs*

### **MOBILE FOOD PANTRY- In NEW MILFORD-First Wednesday of Every Month!**

**Next Date:** 1<sup>st</sup> Wednesday/Month  
4:30pm – 5:30pm



**Where:** Faith Church, 600 Danbury Rd #1, New Milford, CT 06776

**Description:** Due to the COVID-19 pandemic, most sites are now drive-thru or a take-away, pre-packaged supply of food. Each site is staffed by a host organization that determines a safe distribution format based on its location and staffing. For more information, contact the food bank at 203-469-5000. Our full schedule of Mobile Pantry locations and links to more food resources are at [www.ctfoodbank.org/gethelp](http://www.ctfoodbank.org/gethelp). Please note that our Mobile Pantry schedule is always subject to change, so check back regularly.



### **OUR DAILY BREAD FOOD PANTRY**

Thursdays, 2pm-6pm

Upper Level of  
New Milford United Methodist Church  
68 Danbury Road



Provides all children in New Milford year-round access to food. Sign up on their website at [Camella's Cupboard](http://Camella's Cupboard). Food distribution is every Friday, late afternoon.



**“LOAVES AND FISHES HAS RESUMED DINING ROOM MEALS DAILY”!**  
The dining room is open and dinner is served **daily from 4:30 – 5:30 P.M.** at the Richmond Center, 40 Main Street. Guests will receive bag lunches after the meal. Masks and social distancing are required at this time for entry. There are some masks available for guests.

*A Special Message to our Diverse Community from our Social Worker  
Maria De Oliveira*



*Un mensaje especial a nuestra diversa comunidad de nuestro trabajador social:*

*María De Oliveira*

¡Feliz año nuevo! Espero que sean positivos para empezar este año con buenas metas.

Toma un momento para leer nuestro boletín. Está lleno de grandes oportunidades y recursos. Los recursos y las oportunidades en este boletín pueden ayudarte a alcanzar sus metas para el nuevo año. Este boletín contiene conexiones a trabajos, asistencia de calefacción, recursos alimentarios, ahorros financieros, preparación gratuita de impuestos a través de Vita, recursos de Covid y mucho más.

Estoy aquí para ayudarte a conectarte con estos recursos. Por favor llámame con cualquier pregunta que pueda tener. 860-6079 Ext 4, correo electrónico [mdeoliveira@newmilford.org](mailto:mdeoliveira@newmilford.org)

Mi horario de trabajo es de lunes a jueves de 8:30 am a 4:30 pm

Nuestros programas son para residentes de New Milford con ingresos elegibles.

\*\*\*\*\*

Feliz Ano Novo! Espero que você seja positivo para começar este ano com bons objetivos.

Reserve um momento para ler nosso boletim informativo. Está cheio de grandes oportunidades e recursos. Os recursos e oportunidades neste boletim informativo podem ajudá-lo a atingir suas metas de ano novo. Este boletim informativo contém conexões para empregos, assistência para aquecimento, recursos alimentares, economias financeiras, preparação gratuita de impostos através do Vita e recursos Covid e muito mais.

Estou aqui para ajudar você a se conectar com esses recursos. Por favor, me ligue com qualquer dúvida que possa ter. 860-6079 Ext4, E Mail [mdeoliveira@newmilford.org](mailto:mdeoliveira@newmilford.org)

Meu horário de trabalho é de segunda a quinta-feira, das 8h30 às 16h30.

Nossos programas são para residentes de New Milford com qualificação de renda.

-6-

PERMIT NO. 10  
NEW MILFORD CT 06776  
U.S. POSTAGE PAID  
PRESORT STANDARD



NEW MILFORD SOCIAL SERVICES  
2 PICKETT DISTRICT RD  
NEW MILFORD CT. 06776  
860-355-6079  
CHANGE SERVICE REQUESTED

