



WEST ELEVATION

NEW MILFORD PUBLIC LIBRARY
24 MAIN STREET
NEW MILFORD, CT
JOB NUMBER: 1856-00

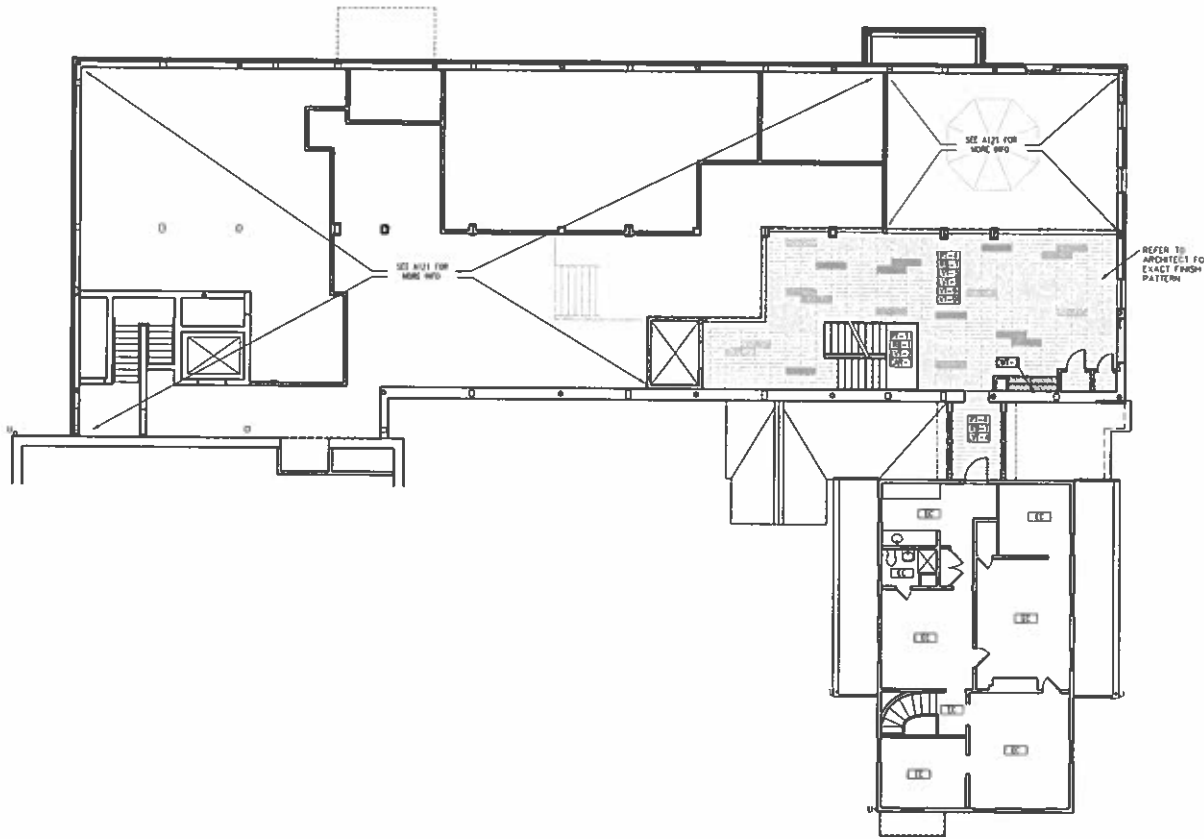
SKETCH 20_0611_01

Lofthrop Associates LLP Architects
333 Westchester Avenue
White Plains, New York 10604
914-741-1115
JUNE 11, 2020

Lothrop

Lothrop Associates LLP Architects
 333 Winchester Avenue
 White Plains, New York 10604
 914-741-1115

White Plains Westchester Red Bank Hartford



REV. NO.	REV. DATE	DESCRIPTION
2	04 30 2010	RELEASED FOR PERMIT
1	12 18 2009	RELEASED FOR BID



NEW MILFORD PUBLIC LIBRARY
 24 MAIN ST
 NEW MILFORD, CONNECTICUT

BUILDING ADDITION
 AND INTERIOR ALTERATIONS

GOODMAN HOUSE SECOND FLOOR/MEZZ. FINISH PLAN

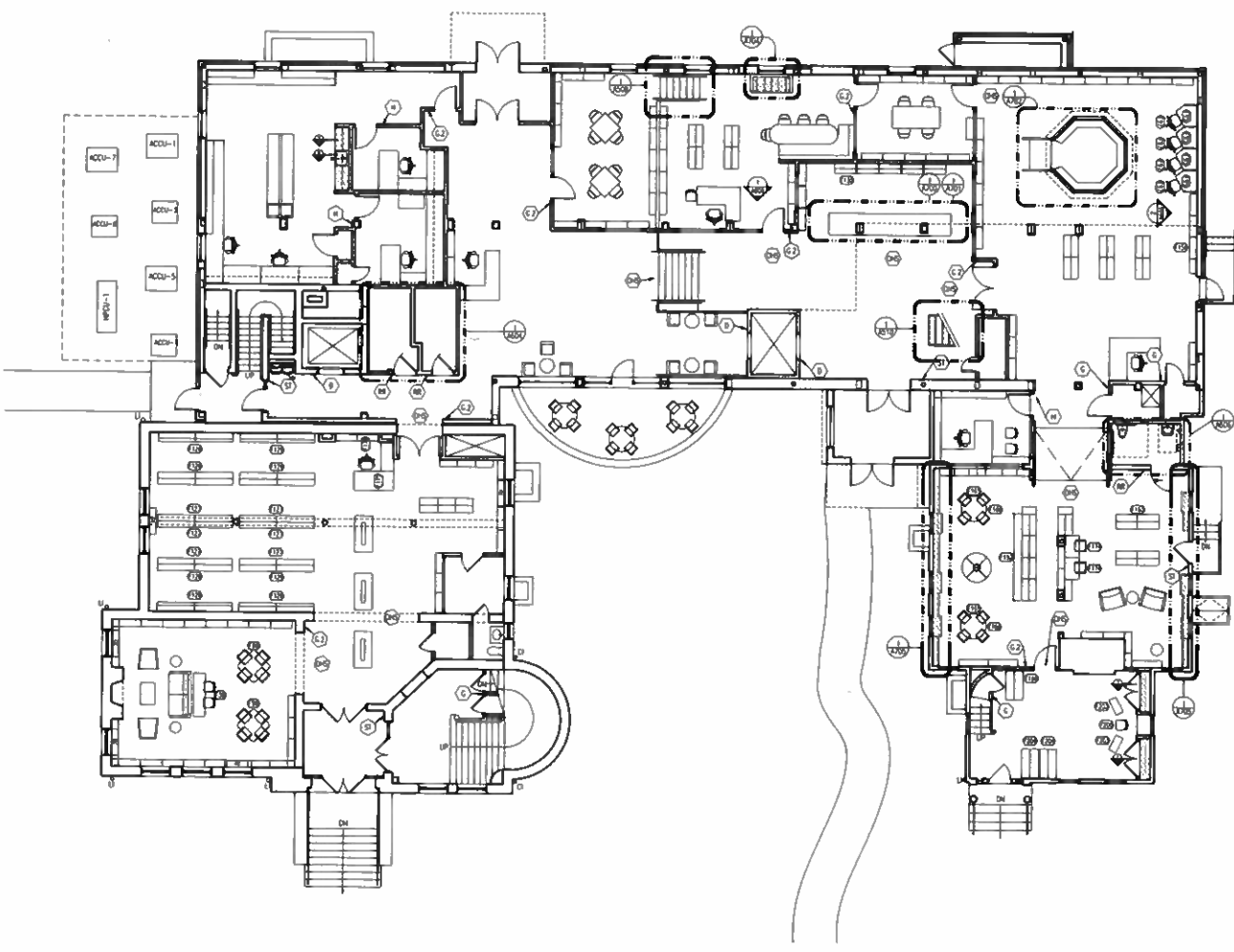
PROJECT NO.: 1856-05 SCALE: 1/8" = 1'-0"

DRAWING NO.

A133

16 15 14 13 12 11 10 9 8 7 6 5 4 3 2 1
 1/8" = 1'-0" (1:25.4)
 1/4" = 1'-0" (1:51.8)
 1/2" = 1'-0" (1:103.6)
 3/4" = 1'-0" (1:155.4)
 1" = 1'-0" (1:207.2)
 1 1/4" = 1'-0" (1:279.4)
 1 1/2" = 1'-0" (1:330.2)
 2" = 1'-0" (1:426.7)
 3" = 1'-0" (1:635.0)
 4" = 1'-0" (1:843.8)
 6" = 1'-0" (1:279.4)
 8" = 1'-0" (1:330.2)
 12" = 1'-0" (1:426.7)
 18" = 1'-0" (1:635.0)
 24" = 1'-0" (1:843.8)
 36" = 1'-0" (1:279.4)
 48" = 1'-0" (1:330.2)
 72" = 1'-0" (1:426.7)
 96" = 1'-0" (1:635.0)
 120" = 1'-0" (1:843.8)
 144" = 1'-0" (1:279.4)
 168" = 1'-0" (1:330.2)
 192" = 1'-0" (1:426.7)
 216" = 1'-0" (1:635.0)
 240" = 1'-0" (1:843.8)
 270" = 1'-0" (1:279.4)
 300" = 1'-0" (1:330.2)
 360" = 1'-0" (1:426.7)
 420" = 1'-0" (1:635.0)
 480" = 1'-0" (1:843.8)
 540" = 1'-0" (1:279.4)
 600" = 1'-0" (1:330.2)
 660" = 1'-0" (1:426.7)
 720" = 1'-0" (1:635.0)
 780" = 1'-0" (1:843.8)
 840" = 1'-0" (1:279.4)
 900" = 1'-0" (1:330.2)
 960" = 1'-0" (1:426.7)
 1020" = 1'-0" (1:635.0)
 1080" = 1'-0" (1:843.8)
 1140" = 1'-0" (1:279.4)
 1200" = 1'-0" (1:330.2)
 1260" = 1'-0" (1:426.7)
 1320" = 1'-0" (1:635.0)
 1380" = 1'-0" (1:843.8)
 1440" = 1'-0" (1:279.4)
 1500" = 1'-0" (1:330.2)
 1560" = 1'-0" (1:426.7)
 1620" = 1'-0" (1:635.0)
 1680" = 1'-0" (1:843.8)
 1740" = 1'-0" (1:279.4)
 1800" = 1'-0" (1:330.2)
 1860" = 1'-0" (1:426.7)
 1920" = 1'-0" (1:635.0)
 1980" = 1'-0" (1:843.8)
 2040" = 1'-0" (1:279.4)
 2100" = 1'-0" (1:330.2)
 2160" = 1'-0" (1:426.7)
 2220" = 1'-0" (1:635.0)
 2280" = 1'-0" (1:843.8)
 2340" = 1'-0" (1:279.4)
 2400" = 1'-0" (1:330.2)
 2460" = 1'-0" (1:426.7)
 2520" = 1'-0" (1:635.0)
 2580" = 1'-0" (1:843.8)
 2640" = 1'-0" (1:279.4)
 2700" = 1'-0" (1:330.2)
 2760" = 1'-0" (1:426.7)
 2820" = 1'-0" (1:635.0)
 2880" = 1'-0" (1:843.8)
 2940" = 1'-0" (1:279.4)
 3000" = 1'-0" (1:330.2)
 3060" = 1'-0" (1:426.7)
 3120" = 1'-0" (1:635.0)
 3180" = 1'-0" (1:843.8)
 3240" = 1'-0" (1:279.4)
 3300" = 1'-0" (1:330.2)
 3360" = 1'-0" (1:426.7)
 3420" = 1'-0" (1:635.0)
 3480" = 1'-0" (1:843.8)
 3540" = 1'-0" (1:279.4)
 3600" = 1'-0" (1:330.2)
 3660" = 1'-0" (1:426.7)
 3720" = 1'-0" (1:635.0)
 3780" = 1'-0" (1:843.8)
 3840" = 1'-0" (1:279.4)
 3900" = 1'-0" (1:330.2)
 3960" = 1'-0" (1:426.7)
 4020" = 1'-0" (1:635.0)
 4080" = 1'-0" (1:843.8)
 4140" = 1'-0" (1:279.4)
 4200" = 1'-0" (1:330.2)
 4260" = 1'-0" (1:426.7)
 4320" = 1'-0" (1:635.0)
 4380" = 1'-0" (1:843.8)
 4440" = 1'-0" (1:279.4)
 4500" = 1'-0" (1:330.2)
 4560" = 1'-0" (1:426.7)
 4620" = 1'-0" (1:635.0)
 4680" = 1'-0" (1:843.8)
 4740" = 1'-0" (1:279.4)
 4800" = 1'-0" (1:330.2)
 4860" = 1'-0" (1:426.7)
 4920" = 1'-0" (1:635.0)
 4980" = 1'-0" (1:843.8)
 5040" = 1'-0" (1:279.4)
 5100" = 1'-0" (1:330.2)
 5160" = 1'-0" (1:426.7)
 5220" = 1'-0" (1:635.0)
 5280" = 1'-0" (1:843.8)
 5340" = 1'-0" (1:279.4)
 5400" = 1'-0" (1:330.2)
 5460" = 1'-0" (1:426.7)
 5520" = 1'-0" (1:635.0)
 5580" = 1'-0" (1:843.8)
 5640" = 1'-0" (1:279.4)
 5700" = 1'-0" (1:330.2)
 5760" = 1'-0" (1:426.7)
 5820" = 1'-0" (1:635.0)
 5880" = 1'-0" (1:843.8)
 5940" = 1'-0" (1:279.4)
 6000" = 1'-0" (1:330.2)
 6060" = 1'-0" (1:426.7)
 6120" = 1'-0" (1:635.0)
 6180" = 1'-0" (1:843.8)
 6240" = 1'-0" (1:279.4)
 6300" = 1'-0" (1:330.2)
 6360" = 1'-0" (1:426.7)
 6420" = 1'-0" (1:635.0)
 6480" = 1'-0" (1:843.8)
 6540" = 1'-0" (1:279.4)
 6600" = 1'-0" (1:330.2)
 6660" = 1'-0" (1:426.7)
 6720" = 1'-0" (1:635.0)
 6780" = 1'-0" (1:843.8)
 6840" = 1'-0" (1:279.4)
 6900" = 1'-0" (1:330.2)
 6960" = 1'-0" (1:426.7)
 7020" = 1'-0" (1:635.0)
 7080" = 1'-0" (1:843.8)
 7140" = 1'-0" (1:279.4)
 7200" = 1'-0" (1:330.2)
 7260" = 1'-0" (1:426.7)
 7320" = 1'-0" (1:635.0)
 7380" = 1'-0" (1:843.8)
 7440" = 1'-0" (1:279.4)
 7500" = 1'-0" (1:330.2)
 7560" = 1'-0" (1:426.7)
 7620" = 1'-0" (1:635.0)
 7680" = 1'-0" (1:843.8)
 7740" = 1'-0" (1:279.4)
 7800" = 1'-0" (1:330.2)
 7860" = 1'-0" (1:426.7)
 7920" = 1'-0" (1:635.0)
 7980" = 1'-0" (1:843.8)
 8040" = 1'-0" (1:279.4)
 8100" = 1'-0" (1:330.2)
 8160" = 1'-0" (1:426.7)
 8220" = 1'-0" (1:635.0)
 8280" = 1'-0" (1:843.8)
 8340" = 1'-0" (1:279.4)
 8400" = 1'-0" (1:330.2)
 8460" = 1'-0" (1:426.7)
 8520" = 1'-0" (1:635.0)
 8580" = 1'-0" (1:843.8)
 8640" = 1'-0" (1:279.4)
 8700" = 1'-0" (1:330.2)
 8760" = 1'-0" (1:426.7)
 8820" = 1'-0" (1:635.0)
 8880" = 1'-0" (1:843.8)
 8940" = 1'-0" (1:279.4)
 9000" = 1'-0" (1:330.2)
 9060" = 1'-0" (1:426.7)
 9120" = 1'-0" (1:635.0)
 9180" = 1'-0" (1:843.8)
 9240" = 1'-0" (1:279.4)
 9300" = 1'-0" (1:330.2)
 9360" = 1'-0" (1:426.7)
 9420" = 1'-0" (1:635.0)
 9480" = 1'-0" (1:843.8)
 9540" = 1'-0" (1:279.4)
 9600" = 1'-0" (1:330.2)
 9660" = 1'-0" (1:426.7)
 9720" = 1'-0" (1:635.0)
 9780" = 1'-0" (1:843.8)
 9840" = 1'-0" (1:279.4)
 9900" = 1'-0" (1:330.2)
 9960" = 1'-0" (1:426.7)
 10020" = 1'-0" (1:635.0)
 10080" = 1'-0" (1:843.8)
 10140" = 1'-0" (1:279.4)
 10200" = 1'-0" (1:330.2)
 10260" = 1'-0" (1:426.7)
 10320" = 1'-0" (1:635.0)
 10380" = 1'-0" (1:843.8)
 10440" = 1'-0" (1:279.4)
 10500" = 1'-0" (1:330.2)
 10560" = 1'-0" (1:426.7)
 10620" = 1'-0" (1:635.0)
 10680" = 1'-0" (1:843.8)
 10740" = 1'-0" (1:279.4)
 10800" = 1'-0" (1:330.2)
 10860" = 1'-0" (1:426.7)
 10920" = 1'-0" (1:635.0)
 10980" = 1'-0" (1:843.8)
 11040" = 1'-0" (1:279.4)
 11100" = 1'-0" (1:330.2)
 11160" = 1'-0" (1:426.7)
 11220" = 1'-0" (1:635.0)
 11280" = 1'-0" (1:843.8)
 11340" = 1'-0" (1:279.4)
 11400" = 1'-0" (1:330.2)
 11460" = 1'-0" (1:426.7)
 11520" = 1'-0" (1:635.0)
 11580" = 1'-0" (1:843.8)
 11640" = 1'-0" (1:279.4)
 11700" = 1'-0" (1:330.2)
 11760" = 1'-0" (1:426.7)
 11820" = 1'-0" (1:635.0)
 11880" = 1'-0" (1:843.8)
 11940" = 1'-0" (1:279.4)
 12000" = 1'-0" (1:330.2)

P:\10 PROJECTS\10-27\2010-10 - New Milford Public Library - Building Addition - Building Addition 10-27-10.dwg (10/27/2010 10:27:10 AM) 10/27/2010 10:27:10 AM
 User: jh1
 Plot Date: 10/27/2010 10:27:10 AM
 Plot Scale: 1/8" = 1'-0"
 Plot Orientation: Landscape
 Plot Style: 10-27-10.ctb
 Plot Device: HP DesignJet 2450



INTERIOR STORAGE LEGEND

TYPE	DESCRIPTION
①	OVERHEAD - SUSPENDED MOUNTED (1 LINE OF COPIES)
②	CIRCULATION PLAN
③	MEDIUM ROOM ID (1 LINE OF COPIES)
④	MEDIUM ROOM ID (2 LINES OF COPIES)
⑤	MEDIUM ROOM ID WITH INSERT
⑥	RESTROOM ID
⑦	STAIRWELL ID

Lothrop

Lothrop Associates LLP Architects
 333 Westchester Avenue
 White Plains, New York 10604
 914-741-1115

White Plains Westchester Red Bank Hartford

DATE	DESCRIPTION	
04-20-2010	RELEASED FOR PERMIT	
12-18-2010	RELEASED FOR BID	
ISSUE NO.	ISSUE DATE	DESCRIPTION



NEW MILFORD PUBLIC LIBRARY
 24 MAIN ST
 NEW MILFORD, CONNECTICUT

BUILDING ADDITION
 AND INTERIOR ALTERATIONS

FIRST FLOOR FURNITURE PLAN

PROJECT NO.: 1056-06 SCALE 1/8" = 1'-0"

DRAWING NO.

A124

